

PHOTOGRAPHIC INTERPRETATION REPORT



KH-7 MISSION 4038
5-12 JUNE 1967

PART II

Declass Review by NIMA / DoD

[Redacted]

JUNE 1967
COPY 202
66 PAGES

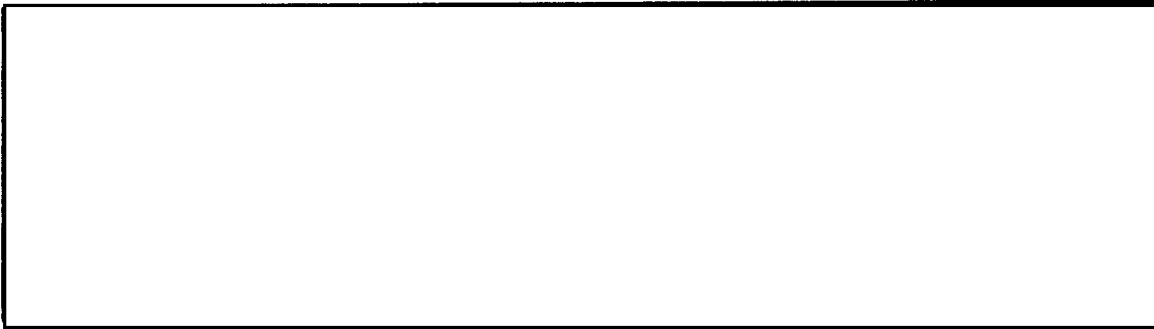
25X

[Redacted]

25X

GROUP 1 EXCLUDED FROM
AUTOMATIC DOWNGRADING
AND DECLASSIFICATION

X1



TARGET CATEGORIES

1. GUIDED MISSILES *
 - A. ICBM Deployment
 - B. IRBM and MRBM (including search areas)
 - C. Research and Development (including space)
 - D. Production Facilities (including test)
 - E. Suspect Missile (Search area or undetermined activity)
 - F.
 - G. Naval Launched Missiles
 - H. Anti-Missile Missile
 - I. SAM Sites
 - J. Short Range Surface-to-surface Missiles
 - K. Missile support/storage areas
 - L. SAM Training Complexes
 2. AIRCRAFT
 - A. Long Range Bases
 - B. Production Facilities (including R and D)
 - C. Airfields
 3. NUCLEAR ENERGY
 - A. Test Area
 - B. Production
 - C. Stockpiles
 - D. Research Institutes
 - E. Suspect Activity
 4. NAVAL ACTIVITY
 - A. Operating Bases
 - B. Production Yards
 - C. Commercial Ports
 - D. Locks and Canals
 5. BIOLOGICAL/CHEMICAL WARFARE
 - A. BW/CW Test Areas (including test)
 - B. Production
 - C. Storage
 - D. Research Institutes
 - E. Suspect Activity
 6. ELECTRONICS
 - A. Missile Tracking Facilities
 - B. Electronics (general)
 7. MILITARY
 - A. Military Installations
 - B. Special Areas
 - C.
 - D. Landing Beaches
 - E.
 - F.
 - G. Tactical SSM Support Facilities
 8. URBAN/INDUSTRIAL
 - A. Complexes
 - B. Industrial Plants
 - C. Geodetic Control Points
 9. OTHER
 - A. Unidentified Installations
- * Digits in these numbers indicate specific target complexes. A suffix identifies individual components within the complex.

[Redacted]

Approved For Release ~~TOP SECRET~~ CIA-RDP99T01396R000300410001-5

[Redacted]

[Redacted]

KH-7 MISSION 4038, 5-12 JUNE 1967

TABLE OF CONTENTS

PREFACE	2
HIGHLIGHTS	3
MISSILES	10
AIR FACILITIES	41
NUCLEAR ENERGY	42
ELECTRONICS/COMMUNICATIONS	45
MILITARY ACTIVITY	46
COMPLEXES	47
INDEX OF TARGETS	49
ATTACHMENTS	APPENDIX

[Redacted]

[Redacted]

KH-7 MISSION 4038, 5-12 JUNE 1967 []

PREFACE

THIS IS THE SECOND AND FINAL OAK REPORT ON MISSION 4038 COVERING THE HIGHEST PRIORITY TARGETS NOT REPORTED IN THE MIDDLE EAST AND NORTH VIETNAM EDITION [] 25X

TARGETS ARE ARRANGED IN THE OAK BY SUBJECT AND WITHIN EACH SUBJECT BY COMOR TARGET NUMBER. TARGETS OF OPPORTUNITY OBSERVED DURING THE OAK REPORTING PERIOD ARE LISTED NUMERICALLY UNDER THE APPROPRIATE SUBJECT AFTER THE LISTING OF COMOR TARGETS. LOCATIONS OF TARGETS IN THIS REPORT ARE INDICATED BY THE COUNTRY CODE PRECEDING THE COORDINATES.

SELECTED PHOTOGRAPHIC REFERENCES FOR EACH TARGET OBSERVED AND REPORTED FOLLOW THE DESCRIPTION OF THE TARGET. PASS NUMBERS, SUFFIXED WITH A FOR ASCENDING AND D FOR DESCENDING, ARE LISTED FIRST, FOLLOWED BY FRAMES WHICH ARE INDICATED BY THE FRAME NUMBER WITH AN INDEX NUMBER RUNNING CONSECUTIVELY FROM THE BEGINNING OF EACH PASS -- 4/8 FOR EXAMPLE, MEANS FRAME 4, INDEX 8. UNIVERSAL REFERENCE GRID COORDINATES FOR NEW TARGETS ARE GIVEN IN PARENTHESIS AFTER THE INDEX NUMBER TO WHICH THEY APPLY. THIS GRID IS IDENTIFIED AS UNIVERSAL GRID NO 1, FEB 64. SYMBOLS INDICATING CONDITIONS WHICH AFFECT THE APPEARANCE OF THE TARGET ON THE PHOTOGRAPHY ARE -- C (CLEAR), SC (SCATTERED CLOUD COVER), HC (HEAVY CLOUD COVER), H (HAZE), CS (CLOUD SHADOW), S (SNOW), O (OBLIQUITY), SD (SEMIDARKNESS), D (DARKNESS), GC (GROUND COVER), CF (CAMOUFLAGE), GR (GROUND RESOLUTION), AND SS (SMALL SCALE).

INTERPRETABILITY OF THE PHOTOGRAPHY IS CATEGORIZED AS G (GOOD), F (FAIR), OR P (POOR). THE EXTENT OF PHOTOGRAPHIC COVERAGE IS DENOTED BY THE SYMBOLS T (TOTAL) OR PT (PARTIAL). THE MODE OF COVERAGE IS INDICATED BY ST (STEREO), PS (PARTIAL STEREO), OR NS (NON-STEREO).

THE INITIAL SCAN OF THE PHOTOGRAPHY IS ACCOMPLISHED IN A SHORT TIME AND PRIOR TO FINAL REFINEMENT OF EPHEMERIS DATA. CONSEQUENTLY, DETAILED ANALYSIS MAY RESULT IN ADDITIONAL INFORMATION. MOREOVER, RECIPIENTS ARE CAUTIONED THAT THE IDENTIFICATION OF TARGETS IS BASED PRIMARILY ON PHOTOGRAPHY AND DOES NOT CONSTITUTE A FINISHED INTELLIGENCE JUDGMENT.

Highlights

X1

Approved For Release ~~TOP SECRET~~ CIA-RDP99T01396R000300410001-5

KH-7 MISSION 4038, 5-12 JUNE 1967

HIGHLIGHTS

A PORTION OF THE PLESETSK MISSILE AND SPACE CENTER IS IMAGED ON 3 OF 7 PROGRAMMED PASSES OF PHOTOGRAPHY. HOWEVER, INTERPRETATION IS LIMITED ON ALL THREE PASSES BY SCATTERED CLOUDS. NONE OF THE FACILITIES AT THE EASTERN END OF THE CENTER ARE COVERED. LAUNCH SITE 16 IS CONFIRMED AS A DUAL PAD SITE SIMILAR TO LAUNCH SITE 21. THE MISSILE SERVICE TOWER AT LAUNCH SITE 3 (SS-6, LAUNCH POINT IV) HAS BEEN REMOVED, BUT THE SERVICE TOWERS ARE PRESENT AT BOTH PADS AT LAUNCH SITE 1 (LAUNCH POINTS I AND II) AND AT LAUNCH SITE 2 (LAUNCH POINT III). A PROBABLE SS-7 MISSILE EXERCISE IS IN PROGRESS AT LAUNCH SITE 5 WITH A MISSILE ERECTED ON THE RIGHT PAD. NO ACTIVITY WAS NOTED

25X1D
25X1D

AT LAUNCH SITE 9, THE GANTRY IS ON THE LEFT PAD WHILE AT LAUNCH SITE 10, THE GANTRY IS ON THE RIGHT PAD. A PROBABLE GANTRY IS UNDER CONSTRUCTION TO THE REAR OF THE LEFT PAD AT SITE 10.

FIVE CONFIRMED AND 1 PROBABLE TYPE IIID SITES ARE NEWLY IDENTIFIED AT THE KOZELSK ICBM COMPLEX. ALL ARE IN THE PREVIOUSLY IDENTIFIED J GROUP WHICH NOW HAS 9 SITES.

THE CURRENT NUMBER OF ICBM LAUNCHERS AT THE 24 KNOWN DEPLOYED COMPLEXES (THE FIGURES SHOWN IN PARENTHESIS INDICATE THE NUMBER OF POSSIBLE LAUNCHERS AND ARE NOT INCLUDED IN THE TOTALS) IS AS FOLLOWS --

TYPE IIIC	177 (1)
TYPE IIID	502 (3)
SUBTOTAL	679 (4)
OTHER LAUNCHERS	209
TOTAL	888 (4)

SIX PASSES OVER SARY-SHAGAN LAUNCH COMPLEX A AND PROBABLE LONG RANGE SAM LAUNCH COMPLEX 2 REVEAL CONSIDERABLE MISSILE ACTIVITY. THE GREATEST NUMBER OF MISSILES OBSERVED ON ANY ONE DAY IS 18, WITH MOST OF THE ACTIVITY AT LAUNCH SITE 3.

AT MOSKVA ABM LAUNCH COMPLEX E24, TRIAD 1, GALOSH LAUNCHERS/ ERECTORS ARE CONFIRMED AT EACH OF THE 8 LAUNCH POSITIONS. AT TRIAD 2, BUILDING C, WORK IS PROGRESSING ON THE PEDESTAL STRUCTURE, BUT IT CANNOT BE DETERMINED WHETHER CONSTRUCTION HAS STARTED ON THE ANTENNA. CONSTRUCTION IS ALSO CONTINUING AT MOSKVA ABM LAUNCH COMPLEX E31. A PREVIOUSLY UNIDENTIFIED FACILITY REPORTED AT BOROVSK IN THE MOSKVA AREA IS NOW CONSIDERED TO BE A POSSIBLE ABM SUPPORT FACILITY. TWO POSSIBLE GALOSH CANISTERS ARE OBSERVED ADJACENT TO THE VERY LARGE BUILDING.

AT THE CHEREPOVETS PROBABLE LONG RANGE SAM LAUNCH COMPLEX,

KH-7 MISSION 4038, 5-12 JUNE 1967

MISSILE ACTIVITY IS OBSERVED. TWO MISSILES ARE ON LAUNCHERS AND THREE ARE ON TRANSPORTERS IN THE MISSILE HANDLING FACILITY.

CONSTRUCTION OF CANOPIES OVER THE DOLLY POSITIONS AT 3 LAUNCH POSITIONS IS OBSERVED FOR THE FIRST TIME AT THE NIZHNYAYA TURA PROBABLE LONG RANGE SAM LAUNCH COMPLEX.

AN AIR WARNING RADAR FACILITY ASSOCIATED WITH THE KIEV PROBABLE LONG RANGE SAM LAUNCH COMPLEX IS NEWLY IDENTIFIED.

WU-SHA-TA-LA SAM SITE A15-2, LOCATED NEAR THE WU-SHA-TA-LA AIRFIELD, CHINA, IS COMPLETE AND THE 6 POSITIONS CONTAIN SA-2 LAUNCHERS. SIX COVERED SA-2 MISSILE TRANSPORTERS ARE LOCATED NEAR THE LAUNCH POSITIONS. OTHER EQUIPMENT OBSERVED INCLUDES A FAN SONG RADAR, 7 TRUCK VANS, 9 VAN TRAILERS, 10 TRACKED PRIME MOVERS, 3 PROBABLE CANISTER TRANSPORTERS, 6 SETS OF BOGIE WHEELS, AND AT LEAST 6 SA-2 MISSILE CANISTERS. ALL VEHICLES AND EQUIPMENT HAVE BEEN BROUGHT TO THE SITE

25X1D SINCE IT WAS LAST PHOTOGRAPHED

AT SEVERODVINSK SHIPYARD 402, THE 402/A-55 (FORMERLY REPORTED AS A U-BALLISTIC MISSILE SUBMARINE) HAS MOVED FROM THE FITTING-OUT QUAY INTO THE ESTUARY AND THE 402/B-SS (PREVIOUSLY REPORTED AS AN UNIDENTIFIED LARGE SS) REMAINS IN THE LAUNCH BASIN. THE LATTER VESSEL IS APPROXIMATELY LONG WITH A 135-FOOT SAIL, AND OTHERWISE RESEMBLES THE H-II-SSBN.

25X1D

25X2

AT THE PING-HSIANG COMPLEX, CHINA, NUMEROUS VEHICLES AND PIECES OF EQUIPMENT ARE OBSERVED THROUGHOUT THE AREA, INCLUDING 973 TRUCKS, 82 SMALL UTILITY TRUCKS, 21 VEHICLES/PIECES OF EQUIPMENT, 20 UNIDENTIFIED PIECES OF EQUIPMENT, AND 6 PROBABLE MORTARS.

STATUS OF TARGET READOUT

THIS OAK REPORTS ON 43 COMOR TARGETS, 1 NON-COMOR TARGET, AND 1 BONUS TARGET.

TABULAR SUMMARY

A RECAPITULATION OF SIGNIFICANT ACTIVITY OBSERVED ON THIS MISSION AND NPIC CURRENT MISSILE LISTINGS IS PRESENTED IN THE FOLLOWING TABLES ON SUCCEEDING PAGES --

X1

[Redacted]

Approved For Release 2003/05/01 : CIA-RDP99T01396R000300410001-5

~~TOP SECRET~~

[Redacted]

[Redacted]

KH-7 MISSION 4038, 5-12 JUNE 1967

25X

25X

- TABLE 1 -- SOVIET ICBM DEPLOYMENT
- TABLE 2 -- SOVIET MRBM AND IRBM DEPLOYMENT
- TABLE 3 -- SAM AND ABM DEPLOYMENT
- TABLE 4 -- DEPLOYED PROBABLE LONG RANGE SAM COMPLEXES
- TABLE 5 -- DATE/TIME OF PHOTOGRAPHIC PASSES

e

2

4

1

[Redacted]

Approved For Release 2003/05/01 : CIA-RDP99T01396R000300410001-5

~~TOP SECRET~~

[Redacted]

25X

25X

25X1D

TABLE 1. DEPLOYED ICBM COMPLEXES, TYURATAM MTC AND PLESETSK MSC

COMPLEX	TYPE II		TYPE III		TYPE IIIC		TYPE IIID		New Positions This Mission		Total Launch Positions	Launch Groups Identified		L-Electronic Facilities	
	A-D		A&B		Sites (Launchers)	Complete	Sites (Launchers)	Complete	IIIC	IIID		IIIC	IIID		
	Sites Launchers	Sites Launchers	Sites Launchers	Sites Launchers											
ALEYSK					19	6					19	3	2		
DOMBAROVSKIY					37	12					37	6	4		
★ DROVYANAYA	3	6	3	9			51	34			66		5		
GLADKAYA	2	4	1	3			61	50			68		6		
IMENI GASTELLO					25	17					25	4	2		
ITATKA	3	6									6				
KARTALY					29	12					29	5	3		
KOSTROMA	6	12	1	3			30				45		3		
★ KOZELSK	3	6	2	6			40	3		6	52		4		
★ NOVOSIBIRSK	3	6	2	6							12				
OLOVYANNAYA			3	9			81	38			90		8	4	
OMSK			1	3							3				
★ PERM	5	10	1	3			41	40			54		4		
SHADRINSK			3	9							9				
SVOBODNY	7	14	1	3			49(1#)				66(1#)		5		
★ TATISHCHEVO							111(1#)	49			111(1#)		11	4	
TEYKOVO	6	12									12				
TYUMEN	2	4									4				
UZHUR					42(1#)	18					42(1#)	7	4		
★ VERKHNAYA SALDA	7	14	2	6							20				
★ YEDROVO	6	12	2	6			38 (1#)	1			56(1#)		4	1	
YOSHKAR-OLA	6	12									12				
YURYA	8	16	3	9							25				
ZHANGIZ-TOBE					25	12					25	4	3		
TOTALS	67	134	25	75	177(1)	77	502(3#)	215		6	888(4#)	29	18	50	9

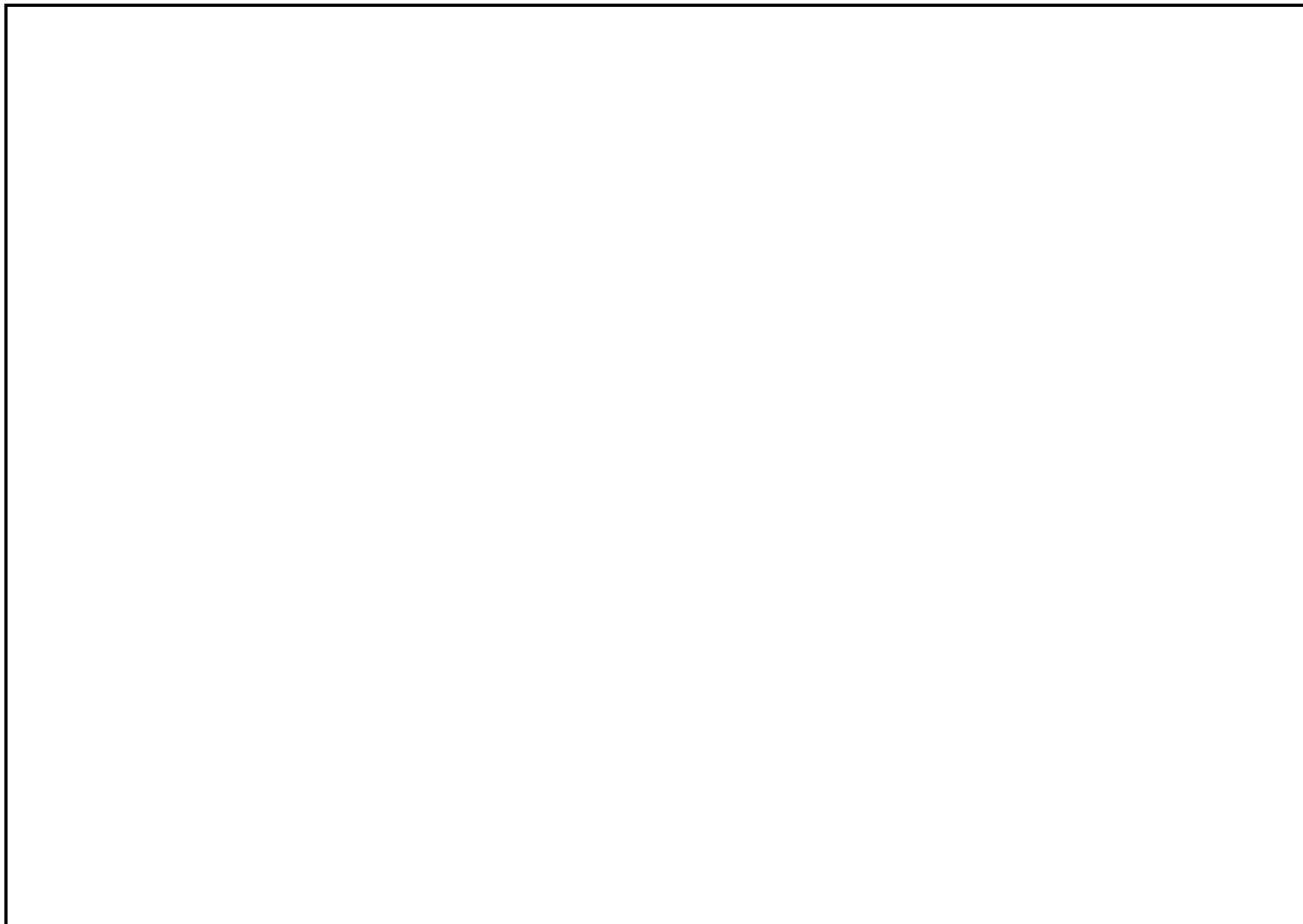
TYURATAM MTC	2	6	3	9	9	6	11	11	60 total launchers includes 8 other single sites and 17 SSM R&D/Space Launch Positions.						
★ PLESETSK MSC	4	8	1	3					39 total SSM Launch Positions -- includes 8 Type I, 9 other Type II, 10 other Type III, and 1 U/I (site 12).						

★ Covered This Mission (#) Possible The Possible Sites Are Not Included In The Total Count

TABLE 2. SOVIET MRBM AND IRBM DEPLOYMENT

Geographic Area	Soft MRBM Launch Areas	Soft IRBM Launch Areas	Hard MRBM Launch Areas	Hard IRBM Launch Areas	Total Launch Areas	Total Launch Positions
Western	118	9	18	10	155	608
Caucasus	3		2	3	8	29
Central Asia	2	2	1	3	8	29
Far Eastern	9	1		1	11	43
Totals	132	12	21	17	182	709

Totals do not include 100 fixed field-type sites with total of 374 launch positions and one launch facility at Sovetskaya Gavan



25X6

25X1D

25X1D

TABLE 4. DEPLOYED PROBABLE LONG RANGE SAM COMPLEXES

Complex	Sites Positions	Tracking/Guidance Facility No of Positions	Associated Air Warning Facility	Orientation	Complex	Sites Positions	Tracking/Guidance Facility No of Positions	Associated Air Warning Facility	Orientation		
ANGARSK	3 18	3	✓		MOZHAYSK	3 18	3				
BABAYEVO	3 18	3			MURASHI	5 30	5				
☆ BORSHCHEV	1 6				NEYA	3 18	3				
CHELYABINSK	3 18	3			☆ NIZHNIY TAGIL	3 18	3				
CHEREPOVETS	5 30	5	✓		☆ NIZHNYAYA TURA	3 18	3				
FEODOSIYA	3 18	3	✓		PERESLAVL-ZALESSKIY	3 18	3	✓			
KALININ	3 18	3			PLESETSK	3 18	3	✓			
☆ KAPUSTIN YAR	2 12	2			SARY-SHAGAN 1	3 18	3	✓			
KHABAROVSK	3 18	3			☆ SARY-SHAGAN 2	2 12	2	✓			
☆ KIMRY	3 18	3	✓		SHARYA	2 12	2				
☆ KIYEV	3 18	3			☆ SVERDLOVSK	3 18	3	✓			
KOSTROMA	3 18	3			TALLINN	5 30	5	✓			
KRASNOYARSK	3 18	3			☆ TOMSK	3 18	3				
KURESSAARE	3 18	3			VOLGOGRAD	3 18	3	✓			
LENINGRAD NE	5 30	5									
LENINGRAD NW	5 30	5									
LENINGRAD SW	5 30	5									
LIEPAJA	5 30	5	✓								
					TOTALS	32 105	615	104		12	

☆ Covered this mission * Probable R&D or training associated ✓ Identified at this complex

TOP SECRET

TOP SECRET

KH-7 MISSION 4038, 5-12 JUNE 1967

TABLE 5. DATE/TIME OF PHOTOGRAPHIC PASSES

Pass	Date	Camera ON		Camera OFF		Pass	Date	Camera ON		Camera OFF	
		Hr(Z)	Min(Z)	Hr(Z)	Min(Z)			Hr(Z)	Min(Z)	Hr(Z)	Min(Z)
4	5 Jun	00	01	00	19	73	9 Jun	07	29	07	50
5	5 Jun	01	30	01	50	74	9 Jun	08	58	09	17
6	5 Jun	03	04	03	27	75	9 Jun	10	28	10	41
7	5 Jun	04	27	04	40	76	9 Jun	11	56	11	56
8	5 Jun	06	02	06	08	77	9 Jun	13	26	13	26
9	5 Jun	07	31	07	52	78	9 Jun	14	55	15	15
10	5 Jun	08	59	09	05	79	9 Jun	16	25	16	25
11	5 Jun	10	24	10	38	80	9 Jun	17	55	17	55
13	5 Jun	13	13	13	47	81	9 Jun	19	56	19	56
14	5 Jun	14	42	14	46	84	10 Jun	00	05	00	24
15	5 Jun	16	10	16	16	85	10 Jun	01	33	01	40
16	5 Jun	17	39	18	15	86	10 Jun	03	09	03	22
17	5 Jun	19	08	19	09	87	10 Jun	04	38	04	46
19	5 Jun	22	38	22	38	88	10 Jun	06	09	06	14
20	5 Jun	23	48	24	07	89	10 Jun	07	35	07	55
21	6 Jun	01	18	01	35	90	10 Jun	09	04	09	23
22	6 Jun	02	42	03	01	91	10 Jun	10	30	10	47
23	6 Jun	04	17	04	24	92	10 Jun	12	01	12	01
24	6 Jun	05	45	05	50	93	10 Jun	13	32	13	32
25	6 Jun	07	10	07	33	94	10 Jun	14	59	15	20
26	6 Jun	08	29	08	47	95	10 Jun	16	29	16	31
27	6 Jun	10	06	10	18	96	10 Jun	18	00	18	00
28	6 Jun	11	31	11	33	97	10 Jun	20	02	20	02
29	6 Jun	13	29	13	31	98	10 Jun	21	30	21	30
36	7 Jun	00	00	00	01	99	10 Jun	22	54	22	55
37	7 Jun	01	11	01	31	100	11 Jun	00	28	00	29
38	7 Jun	02	47	03	01	101	11 Jun	01	38	01	56
39	7 Jun	04	12	04	26	102	11 Jun	03	14	03	27
40	7 Jun	05	47	05	52	103	11 Jun	04	46	04	48
41	7 Jun	07	17	07	24	104	11 Jun	06	14	06	19
42	7 Jun	08	44	08	55	105	11 Jun	07	40	07	59
43	7 Jun	10	13	10	31	106	11 Jun	09	04	09	27
45	7 Jun	13	11	13	11	107	11 Jun	10	35	10	51
46	7 Jun	15	00	15	00	108	11 Jun	12	06	12	06
50	7 Jun	21	08	21	10	109	11 Jun	13	36	13	37
52	7 Jun	23	52	23	52	110	11 Jun	15	04	15	25
53	8 Jun	01	25	01	26	111	11 Jun	16	34	16	35
54	8 Jun	02	50	03	04	112	11 Jun	18	02	18	05
55	8 Jun	04	26	04	33	113	11 Jun	20	06	20	06
56	8 Jun	05	56	06	13	115	11 Jun	22	59	22	59
57	8 Jun	07	25	07	32	116	12 Jun	00	32	00	33
58	8 Jun	08	52	09	01	117	12 Jun	01	42	02	00
59	8 Jun	10	21	10	34	118	12 Jun	03	18	03	28
61	8 Jun	13	19	13	20	119	12 Jun	04	42	04	52
62	8 Jun	15	08	15	08	120	12 Jun	06	18	06	24
64	8 Jun	18	19	18	19	121	12 Jun	07	43	08	05
68	8 Jun	23	59	23	59	122	12 Jun	09	07	09	31
69	9 Jun	01	32	01	47	123	12 Jun	10	39	10	55
70	9 Jun	03	04	03	11	125	12 Jun	13	40	13	40
71	9 Jun	04	28	04	37	126	12 Jun	15	07	15	28
72	9 Jun	06	03	06	08	127	12 Jun	16	35	16	38

TOP SECRET

TOP SECRET
KH-7 MISSION 4038, 5-12 JUNE 1967

Missiles

Approved For Release 2003/05/15 : CIA-RDP99T01396R000300410001-5

RECORD COPY	COPY NO.	PUB. DATE	LOCATION	MASTER	DATE RECEIVED	LOCATION					
DISCONTINUED Approved For Release 2003/05/15 : CIA-RDP99T01396R000300410001-5					MINIMUM	MAXIMUM					
CUT TO COPIES	0	DATE	7-73	CUT TO COPIES	DATE	COPIES DESTROYED					
CUT TO COPIES		DATE		CUT TO COPIES	DATE						
CUT TO COPIES		DATE		MASTER	DATE						
DATE			RECEIVED OR ISSUED			NUMBER OF COPIES					
MO.	DAY	YR.	REC'D	ISS'D	BAL	MO.	DAY	YR.	REC'D	ISS'D	BAL
6	7	68			1						
10	10	72			0						

Approved For Release 2003/05/15 : CIA-RDP99T01396R000300410001-5

TITLE NPIC
X1

June 1967 TS

241025X

TOP SECRET

25X
25X

KH-7 MISSION 4038, 5-12 JUNE 1967

25X1A

MISSILES

PLESETSK MISSILE AND SPACE CENTER

UR 6254N 04038E

THIS TARGET WAS PROGRAMMED FOR COVERAGE ON 7 PASSES. FOUR ARE CLOUD COVERED/NOT COVERED.

SCATTERED CLOUD COVER LIMITS INTERPRETATION OF THE 3 INTERPRETABLE PASSES. NONE OF THE FACILITIES AT THE EASTERN END OF THE CENTER ARE COVERED. LAUNCH SITE 16 IS NOW CONFIRMED AS 2 SOFT PADS. THE MISSILE SERVICE TOWER AT SITE 3 HAS BEEN REMOVED, BUT THE SERVICE TOWERS ARE PRESENT AT SITES 1 AND 2. A PROBABLE SS-7 MISSILE EXERCISE IS IN PROGRESS AT SITE 5. NO ACTIVITY WAS OBSERVED. A PROBABLE GANTRY IS UNDER CONSTRUCTION BEHIND THE LEFT PAD AT SITE 10.

25X1D

25X1D

NO NEW ICBM OR ABM/LONG RANGE SAM FACILITIES ARE OBSERVED IN CLOUD-FREE PORTIONS OF THE 50-NM SEARCH AREA COVERED ON PHOTOGRAPHY.

25X1D

PLESETSK LAUNCH SITE 1

UR 6255N 04027E

TWO POSSIBLE RAIL CARS ARE ON THE PAD AT LAUNCH POINT I.

NO NEW CONSTRUCTION, CHANGES IN FACILITIES, OR PREVIOUSLY UNREPORTED FEATURES OBSERVED.

25X1D

PLESETSK LAUNCH SITE 2

UR 6256N 04031E

NO MISSILES, MISSILE-RELATED EQUIPMENT, NEW CONSTRUCTION, CHANGES IN FACILITIES, OR PREVIOUSLY UNREPORTED FEATURES OBSERVED.

25X1D

TOP SECRET

25X
25X

KH-7 MISSION 4038, 5-12 JUNE 1967

25X1A

PLESETSK LAUNCH SITE 3

UR 6257N 04041E

25X1D

THE MISSILE SERVICE TOWER HAS BEEN REMOVED AND A CIRCULAR HOLE APPROXIMATELY [REDACTED] IN DIAMETER IS APPARENT IN THE CENTER OF THE PAD. AN UNIDENTIFIED OBJECT (OR OBJECTS) APPROXIMATELY [REDACTED] IN DIAMETER IS VISIBLE WITHIN THE OPENING. THERE IS NO EVIDENCE OF MATERIEL OR DISMANTLED MEMBERS OF THE SERVICE TOWER IN THE VICINITY OF THE PAD.

25X1D

25X1D

(SEE ATTACHMENT)

[REDACTED]

PLESETSK LAUNCH SITE 4

UR 6258N 04046E

25X1D

NO MISSILES, MISSILE-RELATED EQUIPMENT, NEW CONSTRUCTION, CHANGES IN FACILITIES, OR PREVIOUSLY UNREPORTED FEATURES OBSERVED.

[REDACTED]

PLESETSK LAUNCH SITE 5

UR 6303N 04057E

25X1D

[REDACTED] A MISSILE EXERCISE IS IN PROGRESS AND A MISSILE IS ERECTED ON THE RIGHT PAD. AT LEAST 9 VEHICLES/PIECES OF EQUIPMENT ARE POSITIONED NEAR THE BASE OF THE MISSILE. AN ERECTOR IS IN ITS NORMAL POSITION ON THE LEFT PAD AND AN EMPTY MISSILE TRANSPORTER IS PARKED FORWARD OF THE LEFT PAD. SEVERAL OTHER VEHICLES/PIECES OF EQUIPMENT ARE PARKED AT VARIOUS POINTS WITHIN THE SITE.

25X1D

[REDACTED] THE MISSILE WAS NOT PRESENT ON THE RIGHT PAD AND THE ERECTOR WAS PULLED BACK FROM THE LAUNCH POINT. SEVERAL SMALL VEHICLES/PIECES OF EQUIPMENT ARE PARKED AT VARIOUS POINTS WITHIN THE SITES.

25X1D

NO NEW CONSTRUCTION, CHANGES IN FACILITIES, OR PREVIOUSLY UNREPORTED FEATURES OBSERVED.

[REDACTED]

X1

[Redacted]

TOP SECRET

[Redacted]

25X
25X

KH-7 MISSION 4038, 5-12 JUNE 1967

[Redacted] 25X1A

PLESETSK LAUNCH SITE 6

UR 6300N 04052E

THE SILO DOORS ARE CLOSED. SEVERAL VEHICLES/PIECES OF EQUIPMENT ARE LOCATED THROUGHOUT THE AREA.

NO NEW CONSTRUCTION, CHANGES IN FACILITIES, OR PREVIOUSLY UNREPORTED FEATURES OBSERVED.

25X1D

[Redacted]

PLESETSK LAUNCH SITE 7

UR 6251N 04034E

SEVERAL VEHICLES/PIECES OF EQUIPMENT ARE VISIBLE IN THE SITE AREA.

NO NEW CONSTRUCTION, CHANGES IN FACILITIES, OR PREVIOUSLY UNREPORTED FEATURES OBSERVED.

25X1D

[Redacted]

PLESETSK LAUNCH SITE 8

UR 6253N 04047E

THREE CYLINDRICAL OBJECTS APPROXIMATELY [Redacted] ARE ON THE LOOP ROAD IN THE SS-8 RAIL-TO-ROAD TRANSFER POINT APPROXIMATELY 1 NM WEST OF LAUNCH LAUNCH SITE 8.

25X1D

NO MISSILES, MISSILE-RELATED EQUIPMENT, NEW CONSTRUCTION, CHANGES IN FACILITIES, OR PREVIOUSLY UNREPORTED FEATURES OBSERVED.

25X1D

[Redacted]

PLESETSK LAUNCH SITE 9

UR 6253N 04051E

NO MISSILES, MISSILE-RELATED EQUIPMENT, NEW CONSTRUCTION, CHANGES IN FACILITIES, OR PREVIOUSLY UNREPORTED FEATURES OBSERVED.

25X1D

[Redacted]

TOP SECRET

[Redacted]

[Redacted]

25X
25X

TOP SECRET

KH-7 MISSION 4038, 5-12 JUNE 1967

25X1A

PLESETSK LAUNCH SITE 10

UR 6252N 04052E

A PROBABLE GANTRY IS UNDER CONSTRUCTION BEHIND THE LEFT LAUNCH PAD.

NO MISSILES OBSERVED.

25X1D



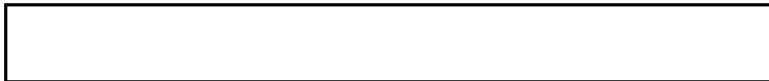
PLESETSK LAUNCH SITE 13

UR 6252N 04044E

NUMEROUS VEHICLES/PIECES OF EQUIPMENT ARE PARKED ON THE APRON ADJACENT TO THE LOOP ROAD. THE ERECTOR ON THE NORTH PAD HAS BEEN PULLED BACK OFF THE LAUNCH PAD.

NO NEW CONSTRUCTION, CHANGES IN FACILITIES, OR PREVIOUSLY UNREPORTED FEATURES OBSERVED.

25X1D



PLESETSK LAUNCH SITE 16

UR 6246N 04035E

SITE 16 CAN NOW BE CONFIRMED AS HAVING 2 SOFT PADS WITH ASSOCIATED LIGHT TOWERS SIMILAR IN CONFIGURATION TO LAUNCH SITE 21.

NO MISSILES, MISSILE-RELATED EQUIPMENT, NEW CONSTRUCTION, CHANGES IN FACILITIES, OR PREVIOUSLY UNREPORTED FEATURES OBSERVED.

(SEE ATTACHMENT)

25X1D



25X2



TOP SECRET

Approved For Release

TOP SECRET

CIA-RDP99T01396R000300410001-5

KH-7 MISSION 4038, 5-12 JUNE 1967

25X1A

PLESETSK CONSTRUCTION SUPPORT FACILITY UR 6254N 04038E

NO MISSILES, MISSILE-RELATED EQUIPMENT, NEW CONSTRUCTION, CHANGES IN FACILITIES, OR PREVIOUSLY UNREPORTED FEATURES OBSERVED.

25X1D

[Redacted]

PLESETSK RAIL-TO-ROAD TRANSFER POINT UR 6255N 04044E

SEVERAL RAIL CARS AND VEHICLES/PIECES OF EQUIPMENT ARE LOCATED IN THE TRANSFER POINT AREA.

NO NEW CONSTRUCTION, CHANGES IN FACILITIES, OR PREVIOUSLY UNREPORTED FEATURES OBSERVED.

25X1D

[Redacted]

PLESETSK ADMINISTRATION/HOUSING FAC UR 6245N 04020E

NO MISSILES, MISSILE-RELATED EQUIPMENT, NEW CONSTRUCTION, CHANGES IN FACILITIES, OR PREVIOUSLY UNREPORTED FEATURES OBSERVED.

25X1D

[Redacted]

PERM ICBM COMPLEX UR 5742N 05619E

THIS TARGET WAS PROGRAMMED FOR COVERAGE ON 5 PASSES. ALL ARE INTERPRETABLE.

TWENTY-TWO TYPE IIID LAUNCH SITES, 3 TYPE II LAUNCH SITES, THE COMPLEX SUPPORT FACILITY, AND THE RAIL-TO-ROAD TRANSFER POINT ARE COVERED. HOWEVER, INTERPRETATION OF TYPE IIID LAUNCH SITES 10I, 12G, AND 16I, TYPE II LAUNCH SITE 3, AND THE COMPLEX SUPPORT FACILITY IS LIMITED DUE TO PARTIAL CLOUD COVER. SEVERAL VEHICLES/PIECES OF EQUIPMENT ARE OBSERVED IN THE RAIL-TO-ROAD TRANSFER POINT. AT LAUNCH SITE 3, A PROBABLE MISSILE IS POSITIONED IN FRONT OF THE LEFT READY BUILDING. AT LAUNCH SITE 5, 2 PROBABLE MISSILES ARE POSITIONED IN FRONT OF THE LEFT READY BUILDING. LAUNCH SITES 18G, 19G, 20G, AND 23G, THE SILO DOOR IS

X1

25X
25X

[REDACTED] KH-7 MISSION 4038, 5-12 JUNE 1967 [REDACTED]

IN AN OPEN POSITION AND SEVERAL VEHICLES/PIECES OF EQUIPMENT ARE PARKED NEAR THE SILO. LAUNCH SITE 39I IS NOW COMPLETE. [REDACTED]

25X9

25X9

[REDACTED] NO OTHER SIGNIFICANT ACTIVITY IS OBSERVED. NO NEW MISSILES OR MISSILE-RELATED ACTIVITY OBSERVED IN THE INTERPRETABLE PORTIONS OF THE 50-NM SEARCH AREA.

CONSTRUCTION STATUS AND DETAILED DATA FOR INTERPRETABLE TYPE IIID LAUNCH SITES ARE AS FOLLOWS --

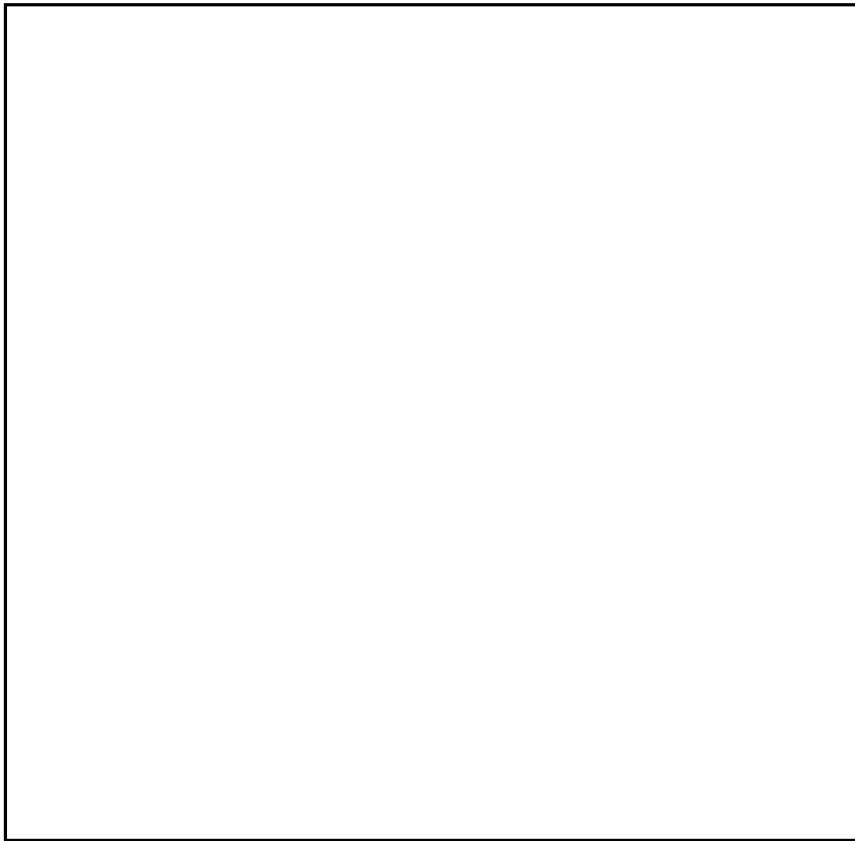
LAUNCH GROUP G -- ALL 10 SITES ARE COMPLETE. NINE SITES (7, 12, 13, 15, 18-20, 23, AND 35) ARE INTERPRETABLE.

LAUNCH GROUP H -- ALL 10 SITES ARE COMPLETE. FIVE SITES (29, 30, 32, 36, AND 59) ARE INTERPRETABLE.

LAUNCH GROUP I -- ALL 10 SITES ARE COMPLETE. SEVEN SITES (10, 16, 22, 38, 39, 41, AND 43) ARE INTERPRETABLE.

LAUNCH SITE 60X IS IN A LATE STAGE OF CONSTRUCTION.

25X1D



25X

25X

25X1D

Approved For Release 2003/05/15 : CIA-RDP99T01396R000300410001-5

Approved For Release 2003/05/15 : CIA-RDP99T01396R000300410001-5

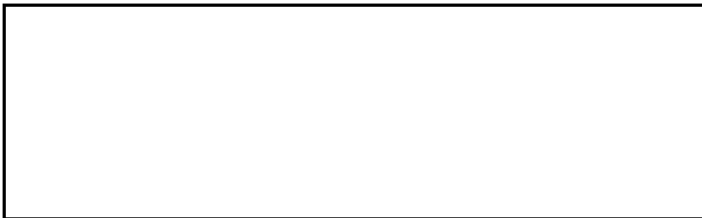
X1

TOP SECRET

25X
25X

KH-7 MISSION 4038, 5-12 JUNE 1967

25X1D



25X1A

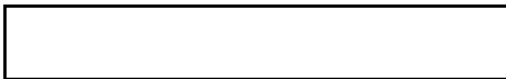
TEYKOVO ICBM COMPLEX

UR 5652N 04034E

NO NEW MISSILE ACTIVITY OBSERVED IN PORTIONS OF THE 50-NM SEARCH AREA COVERED ON PHOTOGRAPHY.

THE COMPLEX IS NOT COVERED.

25X1D



KOZELSK ICBM COMPLEX

UR 5356N 03549E

THIS TARGET WAS PROGRAMMED FOR COVERAGE ON 7 PASSES. ONE IS CLOUD COVERED/NOT COVERED.

THIRTY-FIVE OF THE KNOWN 40 TYPE IIID LAUNCH SITES, ALL 5 SS-8 LAUNCH SITES, THE COMPLEX SUPPORT FACILITY, AND THE RAIL-TO-ROAD TRANSFER POINT ARE INTERPRETABLE. THIS TOTAL REFLECTS 6 (5 CONFIRMED AND 1 PROBABLE) NEWLY IDENTIFIED TYPE IIID LAUNCH SITES. THESE 6 SITES ARE ALL ASSOCIATED WITH LAUNCH GROUP J AND BRING ITS TOTAL TO 9 SITES. SCARRING ACTIVITY IN THE AREA INDICATES THE POSSIBLE FUTURE LOCATION FOR THE TENTH (AND FINAL) SITE IN THIS GROUP. HOWEVER, NO POSITIVE SIGNATURE IS NOTED. THE NEW SITES ARE DESIGNATED SITES 48J AT 54-10N 035-34E, 49J AT 54-05N 035-36E, 50J AT 54-08N 035-38E, 51J AT 54-13N 035-32E, PROBABLE 52J AT 54-15N 035-36E, AND 53J AT 54-07N 035-43E. SITE 48 IS THE CONTROL SITE FOR THIS GROUP. SITES 48 AND 50-53 ARE IN AN EARLY STAGE OF CONSTRUCTION. SITE 49 IS IN THE MID-STAGE OF CONSTRUCTION. THIS REFLECTS A RATHER RAPID RATE OF CONSTRUCTION AS THE SITE CAN BE NEGATED AND WAS FIRST SEEN IN A

25X1D

25X1D

25X1D

25X1D

25X1D

25X1D

25X1D

VERY EARLY STAGE OF CONSTRUCTION [REDACTED] SITES 48 AND 53 CAN BE NEGATED [REDACTED] AND ARE FIRST SEEN [REDACTED] THE REMAINING 3 SITES CAN BE NEGATED [REDACTED] AND ARE FIRST SEEN ON THIS MISSION.

ACTIVITY HAS INCREASED IN THE SS-8 SECTION OF THE TRANSFER POINT SINCE LAST SEEN [REDACTED]

TOP SECRET

25X

25X

X1

25X
25X

[REDACTED] KH-7 MISSION 4038, 5-12 JUNE 1967 [REDACTED]

25X1D

25X1D

[REDACTED] THE NUMBER OF PIECES OF EQUIPMENT IS NEARLY THE SAME AS REPORTED [REDACTED]

25X1D

[REDACTED] THE NUMBER OF TRANSPORTERS INCREASED TO 8, AND [REDACTED] TO 9. THE COUNT OF RAIL CARS, LARGE PIECES OF EQUIPMENT, AND SMALL VEHICLES VARIED WITH EACH PASS. HOWEVER, THE QUANTITY REMAINED EXTENSIVE. ACTIVITY AT THE RAILHEAD AND STORAGE AREA REMAINED AT A HIGH LEVEL. A POSSIBLE CONVOY IS NOTED [REDACTED] IT CANNOT BE DETERMINED WHETHER IT IS ENTERING OR LEAVING THE AREA. NO SIGNIFICANT ACTIVITY IS OBSERVED AT THE SS-8 SITES. NO OTHER NEW MISSILE-RELATED ACTIVITY OBSERVED IN CLOUD-FREE PORTIONS OF THE SEARCH AREA COVERED ON PHOTOGRAPHY.

25X1D

CONSTRUCTION STATUS AND DETAILED DATA FOR TYPE IIID LAUNCH SITES ARE AS FOLLOWS --

LAUNCH GROUP G -- 8 OF THE 10 SITES (7, 9-12, 22, 25, AND 26) ARE INTERPRETABLE. SITES 7, 10, AND 22 ARE NOW COMPLETE. SITES 9, 11, 12, 25, AND 26 ARE IN LATE STAGES OF CONSTRUCTION. SITES 8 AND 23 CAN BE IDENTIFIED ONLY.

LAUNCH GROUP H -- ALL 10 LAUNCH SITES (15-20, 28-30, AND 39) ARE INTERPRETABLE. SITES 16, 19, 20, 28-30, AND 39 ARE IN LATE STAGES OF CONSTRUCTION. SITES 15, 17, AND 18 ARE IN THE MID-STAGE OF CONSTRUCTION.

LAUNCH GROUP I -- 8 OF THE 10 LAUNCH SITES (32, 35-38, 40, 41, AND 45) ARE INTERPRETABLE AND IN THE MID-STAGE OF CONSTRUCTION.

LAUNCH GROUP J -- 8 OF THE KNOWN 9 LAUNCH SITES (44 AND 47-53) ARE INTERPRETABLE. SITES 44, 47, AND 49 ARE IN THE MID-STAGE OF CONSTRUCTION. SITES 48 AND 50-53 ARE IN THE EARLY STAGE.

TRANSFER POINT SITE -- SITE 46X IS INTERPRETABLE AND IN THE MID-STAGE OF CONSTRUCTION.

25X1D

[REDACTED]

25X

25X

25X1D

Approved For Release 2003/05/15 : CIA-RDP99T01396R000300410001-5

Next 2 Page(s) In Document Exempt

Approved For Release 2003/05/15 : CIA-RDP99T01396R000300410001-5

X1

25X
25X

Approved For Release

~~TOP SECRET~~ CIA-RDP99T01396R000300410001-5

KH-7 MISSION 4038, 5-12 JUNE 1967

[Redacted]

25X1D

[Redacted]

25X1A

SARY-SHAGAN ANTIMISSILE TEST CENTER

UR 4602N 07334E

[Redacted]

THIS TARGET WAS PROGRAMMED FOR COVERAGE ON 8 PASSES. SEVEN ARE INTERPRETABLE.

LAUNCH COMPLEXES A AND B, PROBABLE LONG RANGE SAM LAUNCH COMPLEX 2, MRBM IMPACT AREAS 3 AND 5, AND AMM IMPACT AREAS 2 AND 4 ARE THE ONLY FACILITIES AT THE TEST CENTER COVERED. NO NEW MISSILE FACILITIES OBSERVED.

25X1D

[Redacted]

25X1A

SARY-SHAGAN LAUNCH COMPLEX A (ZONE A)

UR 4625N 07252E

[Redacted]

25X1D

LAUNCH COMPLEX A AND PROBABLE LONG RANGE SAM LAUNCH COMPLEX 2 WERE PROGRAMMED FOR COVERAGE ON 7 PASSES DURING THE PERIOD [Redacted] S COMPLETELY CLOUD COVERED. COVERAGE OF THE REMAINING 6 PASSES IS GENERALLY CLEAR, STEREO PHOTOGRAPHY OF GOOD INTERPRETABILITY WITH WEATHER CONDITIONS LIMITING INTERPRETATION [Redacted]

25X1D

25X1D

25X1D

A HIGH LEVEL OF MISSILE ACTIVITY CONTINUES AT LAUNCH SITES 3 AND 4, LAUNCH COMPLEX A, AND AT PROBABLE LONG RANGE SAM LAUNCH COMPLEX 2. CONSIDERABLE MOVEMENT OF MISSILES IS OBSERVED [Redacted] AND DURING THE PERIOD [Redacted] THE MAXIMUM NUMBER OF MISSILES OBSERVED ON ANY 1 DAY IN THE 2 COMPLEXES IS 18 -- 9 AT LAUNCH SITE 3, 2 AT LAUNCH SITE 4, 3 IN THE MISSILE-HANDLING AREA, 3 AT PROBABLE LONG RANGE SAM LAUNCH COMPLEX 2, AND 1 PROBABLE IN THE MISSILE STORAGE AND CHECKOUT AREA.

25X1D

A TABULATION OF MISSILE ACTIVITY IN THE 2 COMPLEXES [Redacted] FOLLOWS --

TOP SECRET

KH-7 MISSION 4038, 5-12 JUNE 1967

LAUNCH COMPLEX A



LAUNCH SITE 3

POSITION 1

LAUNCHER 1 1 1 1

RIGHT DOLLY

LEFT DOLLY

POSITION 2

LAUNCHER 1 1 1

RIGHT DOLLY

LEFT DOLLY 1 1*

POSITION 3

LAUNCHER

RIGHT DOLLY

LEFT DOLLY

POSITION 4

LAUNCHER 1 1 1 1 1*

RIGHT DOLLY

LEFT DOLLY

POSITION 5

LAUNCHER 1 1 1 1 1 1

RIGHT DOLLY 1 1 1 1 ** 1

LEFT DOLLY

POSITION 6

LAUNCHER 1 1 1 1 1*

RIGHT DOLLY 1 1

LEFT DOLLY 1 1 1 1

PROB MOCKUPS 2 2 2 2 2 2

LAUNCH SITE 4

POSITION 1

LAUNCHER 1***

RIGHT DOLLY 1 1

LEFT DOLLY

POSITION 2

LAUNCHER

RIGHT DOLLY

LEFT DOLLY

POSITION 3

LAUNCHER

RIGHT DOLLY

LEFT DOLLY

POSITION 4

LAUNCHER

RIGHT DOLLY

LEFT DOLLY

POSITION 5

LAUNCHER

TOP SECRET

[Redacted]

[Redacted]

[Redacted]

KH-7 MISSION 4038, 5-12 JUNE 1967

RIGHT DOLLY						
LEFT DOLLY						
POSITION 6						
LAUNCHER	1	1	1	1	1	1
RIGHT DOLLY						
LEFT DOLLY						
MISSILE HAND-						
LING AREA	3	3	3	3	3	3
MISSILE STOR &						
CHECKOUT AREA	1*	1*	1*	1*	1*	1*

PROBABLE LONG RANGE SAM LAUNCH COMPLEX 2

25X1D

LOCATION

[Redacted]

LAUNCH SITE A

POSITION 1

LAUNCHER

RIGHT DOLLY

LEFT DOLLY

POSITION 2

LAUNCHER

RIGHT DOLLY

LEFT DOLLY

POSITION 3

LAUNCHERS

RIGHT DOLLY

LEFT DOLLY

POSITION 4

LAUNCHER

RIGHT DOLLY

LEFT DOLLY

POSITION 5

LAUNCHER

RIGHT DOLLY

LEFT DOLLY

POSITION 6

LAUNCHER

RIGHT DOLLY

LEFT DOLLY

LAUNCH SITE B

POSITION 1

LAUNCHER

POSITION 2

LAUNCHER

POSITION 3

LAUNCHER

POSITION 4

LAUNCHER

1 1 1 1 1 1

1

1

[Redacted]

[Redacted]

Approved For Release

TOP SECRET

CIA-RDP99T01396

R000300410001-5

[Redacted]

KH-7 MISSION 4038, 5-12 JUNE 1967

POSITION 5
LAUNCHER
POSITION 6
LAUNCHER

- * PROBABLE
- ** UNDETERMINED
- *** ON TRANSPORTER

25X1D

LAUNCH SITE 1 -- NO SIGNIFICANT CHANGE IN EQUIPMENT IS OBSERVED IN LAUNCH SITE 1 [Redacted]

25X1D

[Redacted] EXCEPT FOR A GUIDELINE MISSILE ON THE LAUNCHER AT POSITION 1, AND 2 FAN SONG E RADARS, 13 ASSOCIATED VANS, AND 1 ADDITIONAL PIECE OF EQUIPMENT IN THE GUIDANCE AREA. NO SIGNIFICANT CHANGE IS OBSERVED IN EQUIPMENT PARKED JUST EAST OF POSITION 6 DURING THE SAME PERIOD.

25X1D

LAUNCH SITE 2 -- LAUNCH POSITIONS 2, 5, AND 6 ARE OCCUPIED BY SA-2 LAUNCHERS AND POSITIONS 1, 3, AND 4 ARE UNOCCUPIED. IN THE SEPARATELY FENCED AREA JUST EAST OF THE LAUNCH SITE, ONLY MINOR ACTIVITY IS OBSERVED DURING THIS PERIOD. IN THE GUIDANCE AREA ARE THE FAN SONG E RADAR AND 12 VANS, 1 EQUIPPED WITH AN ANTENNA AND A SECOND ONE WITH A POSSIBLE ANTENNA.

25X1D

THESE ANTENNAS HAVE BEEN PRESENT BUT NOT PREVIOUSLY REPORTED. THE ANTENNA APPEARS TO BE MOUNTED SLIGHTLY OFF-CENTER ON A [Redacted] VAN, THE SOUTHERNMOST OF THE GROUP. THE ANTENNA WAS FIRST OBSERVED [Redacted]

25X1D

[Redacted] AND WAS NOT PRESENT [Redacted]

25X1D

THE POSSIBLE ANTENNA IS MOUNTED CLOSE TO THE SOUTH END OF A [Redacted] STRUCTURE WHICH APPEARS TO BE 2 VANS ABUTTING. IT IS LOCATED JUST SE OF THE FAN SONG E RADAR. TWO VEHICLES WERE OBSERVED IN TRANSIT WITHIN THE SITE [Redacted]

25X1D

SITE SUPPORT FACILITY -- VEHICULAR MOVEMENT IS OBSERVED DURING THIS PERIOD WITH 10 TO 16 VEHICLES/PIECES OF EQUIPMENT PARKED THERE. IN ADDITION, 1 SERVICING VEHICLE WAS SEEN [Redacted] AND 2 SERVICING VEHICLES [Redacted]

25X1D

25X1D

LAUNCH SITE 3 -- ACTIVITY CONTINUES AT LAUNCH SITE 3 WHERE MISSILES ARE OBSERVED ON EITHER LAUNCHER, DOLLIES, OR EACH ONE SIMULTANEOUSLY AT ALL LAUNCH POSITIONS EXCEPT POSITION 3/3. A SHORT LIGHT-TONED OBJECT IS SEEN ON THE LAUNCHER ON POSITION 3/6 [Redacted] ALL LAUNCH POSITIONS EXCEPT POSITION 3/3 ARE OCCUPIED BY LAUNCHERS. LAUNCH POSITION 3/3 IS OCCUPIED

25X1D

25X1D

[Redacted]

KH-7 MISSION 4038, 5-12 JUNE 1967

25X1D

BY A LAUNCHER [REDACTED] WITH A TRANSPORTER NEARBY

25X1D

[REDACTED] THE LAUNCHER MOVED FROM

THE LAUNCH POINT TO THE SERVICE ROAD NEARBY. THERE ARE

2 DOLLIES AT POSITIONS 3/4, 3/5, AND 3/6 ON ALL PASSES.

NO DOLLIES ARE PRESENT AT POSITIONS 3/1 OR 3/3. ONE

25X1D

PIECE OF EQUIPMENT IS ADJACENT TO THE LAUNCHER AT

POSITION 3/3 [REDACTED] ONE DOLLY IS OBSERVED AT

POSITION 3/2 AND AN ADDITIONAL PIECE OF EQUIPMENT IS

NEAR THE LAUNCHER [REDACTED] JUST NORTH OF POSITION

25X1D

3/3, EQUIPMENT CONSISTS OF 2 PROBABLE MOCKUP MISSILES,

7 LAUNCHERS, 17 MISSILE DOLLIES, 1 MISSILE TRANSPORTER,

AND SEVERAL OTHER PIECES OF EQUIPMENT. THERE WAS

LITTLE MOVEMENT OF THIS EQUIPMENT DURING THIS PERIOD.

25X1D

[REDACTED] THE WESTERNMOST OF THE 2

PROBABLE MOCKUP MISSILES HAD BEEN SHIFTED SLIGHTLY.

FOUR VANS/GENERATORS REMAIN IN THE CENTRAL AREA DURING

THIS PERIOD.

LAUNCH SITE 4 -- MISSILE ACTIVITY WAS OBSERVED AT

LAUNCH POSITIONS 4/1 AND 4/6 ON LAUNCHERS AND DOLLIES

DURING THIS PERIOD. [REDACTED] A MISSILE WAS SEEN ON

25X1D

A TRANSPORTER NEAR THE LAUNCHER AT POSITION 4/1. NO

MISSILE ACTIVITY OBSERVED AT POSITIONS 4/2 THROUGH 4/5.

LAUNCHERS OCCUPY ALL POSITIONS EXCEPT POSITION 4/5.

THE LAUNCHER AT POSITION 4/4 IS ERECTED ON ALL PASSES.

TWO DOLLIES ARE PRESENT AT POSITIONS 4/1 AND 4/3, 1

DOLLY AT POSITIONS 4/2 AND 4/4, AND NO DOLLIES AT

25X1D

POSITIONS 4/5 AND 4/6. A PROBABLE TRANSPORTER IS ON

THE ROAD NEAR THE CENTER OF THE SITE [REDACTED]

ELECTRONIC SITE B AND THE MISSILE-HANDLING AREA -- NO

SIGNIFICANT CHANGE IS OBSERVED AT ELECTRONIC SITE B

25X1D

[REDACTED] AND DURING THE PERIOD [REDACTED]

25X1D

AT THE MISSILE-HANDLING AREA TO THE EAST, 2 MISSILES

ARE SEEN IN TANDEM POSITION CLOSE TO THE NORTH END OF

THE EASTERN OF THE 2 PARALLEL, 215-FT LONG ELEVATED

RAIL-EQUIPPED STRUCTURES [REDACTED] AND A SINGLE

25X1D

MISSILE HAS APPEARED CLOSE TO THE NORTH END OF THE

WESTERN STRUCTURE. THREE CRATES ARE SEEN JUST SW OF

THESE STRUCTURES [REDACTED] 1 CRATE [REDACTED] AND NO

25X1D

CRATES [REDACTED]

25X1D

LAUNCH SITES 5 AND 6 AND ELECTRONIC SITE C -- NO

SIGNIFICANT CHANGES ARE OBSERVED IN FACILITIES AT

LAUNCH SITES 5 AND 6 [REDACTED]

25X1D

THE TRENCH WHICH [REDACTED] WAS OBSERVED TO EXTEND FROM

THE N/S CABLE LINE NEAR LAUNCH SITE 6 TOWARD THE

MISSILE STORAGE AND CHECKOUT AREA HAS BEEN TIED IN WITH

25X1D

KH-7 MISSION 4038, 5-12 JUNE 1967

25X1D

THE PRINCIPAL N/S WATER LINE AND HAS ENTERED THE CHECKOUT AREA. NO ADDITIONAL WORK HAS BEEN PERFORMED ON THE SECOND TRENCH EXTENDING FROM THE EAST-CENTRAL PORTION OF THE OUTER FENCE LINE OF LAUNCH SITE 6 TOWARD THE MISSILE STORAGE AND CHECKOUT AREA. AT ELECTRONIC SITE C, THE LARGE ANTENNAS REMAIN ON THE GROUND AT RADAR POSITIONS C-1 AND C-2. AT RADAR POSITION C-3, THE POSSIBLE PROBABLE LONG RANGE SAM ENGAGEMENT RADAR IS STILL INCOMPLETE.

25X1D

25X1D

A SERVICING VEHICLE LEFT THE NEW PAD ADJACENT TO THE CENTRAL CONTROL BUILDING AND A SIMILAR ONE APPEARED ADJACENT TO THIS RADAR. BETWEEN COVERAGE OF

25X1D

THE VANS ON THE PAD AT POSITION C-3 REMAINED UNCHANGED IN NUMBER, BUT SHIFTED LOCATION. NO CHANGE IS APPARENT IN FACILITIES AT THE CONTROL CENTER

25X1D

EXCEPT THAT WORK IS APPARENTLY BEING PERFORMED ON THE ROOF OF THE WESTERN WING OF THE CENTRAL CONTROL BUILDING. THE PROBABLE LONG RANGE SAM ENGAGEMENT RADAR AND THE 9 PROBABLE ELECTRONIC VANS REMAIN ON THE PAD ADJACENT TO THE NW CORNER OF THE CENTRAL CONTROL BUILDING, ESSENTIALLY AS SEEN

25X1D

25X1D

25X1D

ELECTRONIC SITE D -- NO SIGNIFICANT CHANGE IS OBSERVED

25X1D

ELECTRONIC SITE E -- MOVEMENT OF THE RADAR IS NOTED DURING THIS PERIOD. THE SITE CONSISTED OF 2 BAR LOCK RADARS (ONE TOWER-MOUNTED AND ONE ON THE GROUND), ONE TOWER-MOUNTED PROBABLE BIG BAR RADAR, AND ONE UNOCCUPIED TOWER. THE PROBABLE BIG BAR RADAR WAS ON THE GROUND ADJACENT TO THE NORTHERN TOWER.

25X1D

25X1D

THE 2 BAR LOCK RADARS WERE OBSERVED ON THE 2 NORTHERN TOWERS, THE SOUTHERN TOWER WAS UNOCCUPIED, AND THE PROBABLE BIG BAR RADAR WAS NOT PRESENT. TWENTY-FIVE VEHICLES/VANS REMAINED AT THE SITE DURING THIS PERIOD.

25X1D

25X1D

25X1D

ELECTRONIC SITE F -- THE 2 BACK NET RADARS REMAIN AT THE SAME LOCATIONS AS SEEN. TWO PROBABLE SIDE NET RADARS ARE PRESENT, BUT NOT ON THE PREPARED POSITIONS. THESE RADARS WERE PROBABLY PRESENT DURING THIS PERIOD, VEHICLES/VANS AT THE SITE DECREASED IN NUMBER FROM 26 TO 19.

MISSILE STORAGE AND CHECKOUT AREA -- WORK CONTINUES ON THE 80 X 20-FT EXTENSION TO THE EASTERNMOST MISSILE STORAGE/HANDLING BUILDING. IN ADDITION, A SHORT EXTENSION IS OBSERVED ON THE SOUTHERNMOST MISSILE

~~TOP SECRET~~

KH-7 MISSION 4038, 5-12 JUNE 1967

X1

25X

25X

25X1D

CHECKOUT BUILDING. THIS COULD FIRST BE DETECTED ON PHOTOGRAPHY [REDACTED] ADDITIONAL TRENCHING HAS OCCURED WITHIN THE SITE. THE TRENCH FROM THE N/S WATER LINE HAS ENTERED THE SITE AREA AND PARALLELS THE EAST BOUNDARY. NO SIGNIFICANT CHANGE IS OBSERVED IN THE EQUIPMENT AND CRATES PRESENT [REDACTED] THE PROBABLE LONG RANGE SAM PRESENT [REDACTED] IS STILL LOCATED IN THE FACILITY.

25X1D

25X1D

HEADQUARTERS AND ADMINISTRATION AREA -- NO SIGNIFICANT CHANGES ARE OBSERVED IN FACILITIES. VEHICLES OBSERVED ON ANY ONE DAY RANGED FROM APPROXIMATELY 55 TO 75.

SAM ON-SITE SUPPORT FACILITY -- NO SIGNIFICANT CHANGE IS OBSERVED IN FACILITIES.

AIRSTRIP -- NO CHANGE IS OBSERVED IN FACILITIES AND NO AIRCRAFT ARE OBSERVED.

25X1D

PROBABLE LONG RANGE SAM LAUNCH COMPLEX 2 -- LAUNCHERS ARE OBSERVED AT ALL LAUNCH POSITIONS OF LAUNCH SITES A AND B, EXCEPT AT POSITION B/2. THE LAUNCHERS ARE ERECTED AT POSITIONS B/2, B/4, AND B/6 [REDACTED] MISSILES ARE SEEN AT POSITIONS A/6, B/1, AND B/4.

25X1D

THERE ARE 2 DOLLIES AT ALL 12 POSITIONS. THOSE AT SITE B REMAIN COVERED AND IN MOST INSTANCES ARE NOT YET PROPERLY ALIGNED. MISSILE TRANSPORTERS ARE SEEN AT

25X1D

POSITION A/4 [REDACTED] AT POSITION A/6 [REDACTED] AND AT POSITION B/4 [REDACTED] RAILS HAVE NOT

25X1D

YET BEEN CONSTRUCTED AT SITE B, ALTHOUGH THERE MAY BE EVIDENCE OF RAIL CONSTRUCTION AT POSITIONS B/1 AND B/6.

25X1D

THE ENGAGEMENT RADARS REMAIN IN THE ASSOCIATED TRACKING/GUIDANCE RADAR FACILITY. NO SIGNIFICANT CHANGES ARE OBSERVED IN THE BACK NET/SIDE NET AIR WARNING SITE TO THE NE OR IN THE 2 NEARBY UNIDENTIFIED SITES.

(SEE ATTACHMENT)

25X1D



~~TOP SECRET~~

25X

25X

X1

Approved For Release

TOP SECRET

CIA-RDP99T01396R000300410001-5

KH-7 MISSION 4038, 5-12 JUNE 1967

25X1A

SARY-SHAGAN LAUNCH COMPLEX B (ZONE B)

UR 4559N 07231E

[Redacted]

25X1D

THIS TARGET WAS PROGRAMMED FOR COVERAGE ON 7 PASSES. ONE IS CLOUD COVERED. THE OTHER 6 ARE OF GENERALLY GOOD INTERPRETABILITY AND COVER THE COMPLEX

25X1D

[Redacted]

25X1D

NO MAJOR CHANGES IN FACILITIES ARE OBSERVED THROUGHOUT THE COMPLEX. AT LAUNCH FACILITY C, A SMALL (DIAMETER [Redacted]) PROBABLE ENVIRONMENTAL DOME IS IDENTIFIED APPROXIMATELY 375 FT SOUTH OF THE SW CORNER OF THE LARGE TRIAD BUILDING. IT WAS NOT PRESENT

25X1D

25X1D

[Redacted] AND WAS POSSIBLY PRESENT [Redacted]

25X1D

A GALOSH CANISTER IS ENGAGED, BUT NOT RAISED, IN THE ERECTOR AT LAUNCH POSITION C-2 ON ALL 6 DAYS OF COVERAGE. LAUNCH POSITION C-3, PREVIOUSLY UNDER CONSTRUCTION, IS PROBABLY COMPLETE. BOTH ERECTOR ARMS ARE PRESENT ALONG WITH VEHICLE INDICES.

25X1D

THE 3 SMALL CONSTRUCTION SUPPORT BUILDINGS IN THE SW CORNER OF LAUNCH FACILITY C HAVE BEEN REMOVED SINCE [Redacted] CABLE TRENCHING PREVIOUSLY OBSERVED TO BE COVERED CAN NOW BE SEEN TO BE REOPENED BETWEEN LAUNCH POSITIONS C-1, C-2, AND TRIAD BUILDING B. THE RETRENCHING BEGAN [Redacted]

25X1D

25X1D

AT LAUNCH FACILITY B, 2 UNIDENTIFIED PIECES OF MISSILE HANDLING EQUIPMENT REMAIN PARKED ON THE EAST EDGE OF LAUNCH PAD B-2 ON ALL 6 DAYS.

25X1D

THREE PROBABLE ELECTRONIC VANS REMAIN PARKED AT INSTRUMENTATION SITE B-1 ON ALL 6 DAYS. [Redacted]

25X1D

[Redacted] 1 POSSIBLE MISSILE TRANSPORTER IS PARKED IN THE MISSILE ASSEMBLY/CHECKOUT AREA. [Redacted]

25X1D

ALL 6 LAUNCH POSITIONS AT THE SA-2 SAM SITE ARE OCCUPIED BY LAUNCHERS AND 4 LAUNCHERS HAVE SA-2 MISSILES MOUNTED ON 4 LAUNCHERS. [Redacted] ONLY 3

25X1D

OF THE 6 LAUNCHERS ARE OCCUPIED BY SA-2 MISSILES. IN THE COMPLEX SUPPORT AREA WATER STORAGE FACILITY, THE SECOND LARGE WATER TANK BEING ADDED IS NOW COVERED. BOTH TANKS APPEAR COMPLETE, BUT ARE NOT EARTH COVERED AS ARE THE 2 SMALLER ORIGINAL TANKS.

25X1D

[Redacted]

TOP SECRET

25X
25X

KH-7 MISSION 4038, 5-12 JUNE 1967

X1

25X1D

25X1A

SEVERODVINSK NAVAL BASE AND SHIPYARD 402 UR 6434N 03949E

25X1D

25X1D

OB -- LAUNCH BASIN (DRY) -- ONE 402/B-SS (PREVIOUSLY REPORTED AS UNIDENTIFIED LARGE SS) APPROXIMATELY [REDACTED] LENGTH OVERALL, BOW-TO-SAIL DISTANCE APPROXIMATELY [REDACTED] FT, SAIL-TO-STERN DISTANCE APPROXIMATELY 205 FT (BOTH EXTREMITY-TO-SAIL VALUES ARE VERY CLOSE TO H-II-SSBN VALUES AND THE EXTREMITIES ARE QUITE SIMILAR TO H-II-SSBN IN APPEARANCE). THE SAIL LENGTH AT DECKLINE IS APPROXIMATELY 135 FT WITH A CUT-DOWN AREA OF 70-PLUS FT NEAR THE CENTER OF THE STRUCTURE. NO MISSILE TUBES ARE OBSERVED AT THIS TIME. ONE AT AND 1 UNIDENTIFIED AUXILIARY ARE ALSO PRESENT.

FITTING-OUT QUAY, MAIN YARD -- 1 E-II-SSGN IN FLOATING DOCK, 3 PROBABLE N-SSN (1 IN FLOATING DOCK), 1 AT, AND 4 BARGES.

WEST BASIN -- 1 J-SSG, 1 KRESTA-DLGM, 1 TRANSPORTER DOCK, AND 11 UNIDENTIFIED SMALL SURFACE VESSELS. IN ESTUARY -- ONE 402/A-SSB (PREVIOUSLY REPORTED AS A U-BALLISTIC MISSILE SUBMARINE) IN COMPANY WITH 1 FLOATING CRANE, 3 SMALL VESSELS, 1 BARGE, AND 2 RAFTS. NUCLEAR SUBMARINE SPECIAL SUPPORT FACILITY -- 1 N-SSN. NAVAL BASE PIERS -- 4 UNIDENTIFIED SURFACE VESSELS. SHIP REPAIR YARD QUAY -- 1 H-II-SSBN (SCAFFOLDED SAIL), 1 G-II-SSB, 1 G-SSB (SAIL AT LEAST PARTIALLY REMOVED), 1 Z-SS, 1 W (TWIN-CYLINDER)-SSG, 1 BOLVA-APL, 1 ZEYA YRSN, 1 BUSSARD-AKL, 3 AT, 1 FLOATING CRANE, 1 YAGT, 2 SMALL VESSELS INBOARD OF SCREENS, AND SEVERAL BARGES. IN WET BASIN -- 1 H-SSBN, 1 N-SSN, 1 G-SSB, AND 2 BARGES (WITH CONNECTING LINES TO THE H AND N). EAST QUAY -- 1 ZEYA YRSN, 1 CATAMARAN, 1 AT, 1 MERCHANT SHIP, 1 FLOATING CRANE, AND A BARGE. NEW QUAY -- 1 MERCHANT SHIP.

THE NEW PIER APPEARS COMPLETE, A COVERED REPAIR WAY IS BEING WALLED IN ON THE SOUTH SIDE, AND CONSTRUCTION CONTINUES ON THE NEW FABRICATION BUILDING WITH THE ROOF NEARLY COMPLETE.

(SEE ATTACHMENT)

25X1D

TOP SECRET

25X
25X

KH-7 MISSION 4038, 5-12 JUNE 1967

25X1A

MOSKVA ABM SEARCH AREA

UR 5545N 03737E

THIS TARGET WAS PREDICTED FOR COVERAGE ON 8 PASSES.
TWO ARE CLOUD COVERED.

A POSSIBLE ABM SUPPORT FACILITY IS IDENTIFIED AT 55-18N
036-33E, APPROXIMATELY 6.5 NM NNE OF BOROVSU, USSR.
(SEE MISSILE NO COMOR.)



25X1D

MOSKVA ABM LAUNCH COMPLEX E24

UR 5521N 03629E

THIS TARGET WAS PROGRAMMED FOR COVERAGE ON 8 PASSES.
FOUR ARE CLOUD COVERED/NOT COVERED.

TRIAD 1 -- THE PRESENCE OF A GALOSH LAUNCHER/ERECTOR AT
EACH OF THE 8 LAUNCH POSITIONS IS NOW CONFIRMED. THE
LAUNCHERS/ERECTORS APPEAR TO BE COMPLETE, BUT ARE
UNOCCUPIED AT THIS TIME. THE MECHANISMS ARE ROTATED IN
SEVERAL AZIMUTHAL POSITIONS. WHAT APPEARS TO BE
LANDSCAPING OF A SMALL AREA HAS TAKEN PLACE ADJACENT TO
BUILDING C.

TRIAD 2 -- ASSEMBLY OF THE FIRST SECTIONS OF THE
RADOMES ON THE GROUND APPEARS TO BE COMPLETE, ADJACENT
TO BUILDINGS A, B, AND C. IN ADDITION, THE CAPPING
SECTION FOR THE BUILDING B RADOME HAS BEEN BROUGHT IN
AND HAS BEEN PLACED WITHIN THE RADOME SECTION, PROBABLY
FOR STORAGE. AN IRREGULARLY SHAPED STRUCTURE IS
PRESENT WITHIN THE CIRCULAR BASES FOR THE RADOMES ON
BUILDINGS B AND C. THE STRUCTURE, AS MEASURED ON
BUILDING C, IS APPROXIMATELY 30 FT HIGH AND
APPROXIMATELY [REDACTED] WIDE AT WHAT IS POSSIBLY ITS WIDEST
POINT. IT APPEARS TO TAPER TO A NARROWER, ALTHOUGH
UNDETERMINED, WIDTH AT ITS BASE. WHEN VIEWED FROM
SLIGHTLY DIFFERENT PERSPECTIVES, THE STRUCTURES APPEAR
TO HAVE AT LEAST 3 POSSIBLE PROJECTIONS DISCERNIBLE ON
THE MAIN STRUCTURE NEAR THE TOP. THE PROJECTIONS HAVE
A WIDTH OF APPROXIMATELY 10 FT, BUT THE EXACT SHAPE
CANNOT BE DETERMINED. IT CANNOT BE ESTABLISHED AT THIS
TIME WHETHER THESE STRUCTURES ARE EITHER COMPLETE OR
PARTIALLY ASSEMBLED ANTENNAS, OR IF THEY ARE ONLY THE

25X1D

X1

25X
25X

[REDACTED] KH-7 MISSION 4038, 5-12 JUNE 1967 [REDACTED]

25X1D

25X1D

25X1D

MOUNTS FOR ANTENNAS WHICH HAVE YET TO BE INSTALLED. THE INSIDE DIAMETER OF THE CIRCULAR BASE FOR THE RADOME IS APPROXIMATELY [REDACTED] THE MAXIMUM DIAMETER OF THE RADOME SECTION ON THE GROUND ADJACENT TO BUILDING C IS APPROXIMATELY [REDACTED] THE HEIGHT OF A COMPLETED RADOME, ON BUILDINGS B AND C IN TRIAD 1, IS APPROXIMATELY [REDACTED] FT. CONSTRUCTION OF LAUNCH POSITIONS DOES NOT APPEAR TO HAVE STARTED IN THE TRIAD 2 AREA. A BUILDING, APPROXIMATELY 155 X 115 FT, IS UNDER CONSTRUCTION ADJACENT TO THE T-SHAPED EARTH-MOUNDED BUILDING. IT APPEARS THAT THIS BUILDING MAY BE DIVIDED INTO APPROXIMATELY 20-FT-WIDE COMPARTMENTS ALONG ITS MAJOR DIMENSION. SOME ADDITIONAL CONSTRUCTION ACTIVITY IS UNDERWAY IN A WOODED AREA ON THE OPPOSITE SIDE OF THE ENTRANCE ROAD TO THE COMPLEX. IN THE SUPPORT AREA, OUT OF A TOTAL OF 11 MULTISTORY APARTMENT-TYPE BUILDINGS, 9 APPEAR TO BE EXTERNALLY COMPLETE AND 2 ARE IN THE MID-STAGE OF CONSTRUCTION. NO OTHER SIGNIFICANT CHANGE OBSERVED. NO MISSILES ARE IDENTIFIED WITHIN THE COMPLEX.

(SEE ATTACHMENT)

25X1D

[REDACTED]

25X1A

MOSKVA ABM LAUNCH COMPLEX E31

UR 5607N 03629E [REDACTED]

THIS TARGET WAS PROGRAMMED FOR COVERAGE ON 6 PASSES. THREE ARE CLOUD COVERED/NOT COVERED.

25X1D

TRIAD 1 -- CONSTRUCTION HAS BEEN STARTED ON THE WING STRUCTURES AT EACH CORNER ON THE NW SIDE OF BUILDING A, ALTHOUGH THAT SIDE OF THE BUILDING APPEARED TO BE COMPLETE [REDACTED] AT THIS TIME THE STRUCTURES APPEAR TO BE IN AN EARLY TO MID-STAGE OF COMPLETION.

25X1D

TRIAD 2 -- THE WALLS OF THE PRINCIPAL BUILDINGS APPEAR TO HAVE BEEN COMPLETED [REDACTED] A PROBABLE FOUNDATION EXCAVATION FOR A WING STRUCTURE IS PRESENT AT ONE CORNER ON THE NW SIDE OF THE BUILDING. THE PLATFORM/PEDESTAL FOR THE RADAR HAS BEEN AT LEAST PARTIALLY ERECTED ON BUILDING A IN BOTH TRIADS. ASSEMBLY OF THE RADAR MOUNT ITSELF DOES NOT YET APPEAR TO BE UNDERWAY. NUMEROUS RECTANGULAR, LIGHT-TONED

25X
25X

X1

Approved For Release TOP SECRET CIA-RDP99T01396R000300410001-5

KH-7 MISSION 4038, 5-12 JUNE 1967

PANELS ARRANGED IN LINEAR PATTERNS ARE OBSERVED ON THE GROUND IN SEVERAL AREAS OF THE COMPLEX. THE LOCATION AND POSITIONING OF THESE PANELS, PARTICULARLY BETWEEN BUILDINGS B AND C IN TRIAD 2, SUGGEST THAT THEY MAY BE PART OF PRECAST SECTIONS OF A CONDUIT. CONSTRUCTION OF LAUNCH POSITIONS DOES NOT APPEAR TO HAVE BEEN STARTED WITHIN THE COMPLEX AT THIS TIME.

IN THE SUPPORT AREA, OUT OF A TOTAL OF 11 MULTISTORY APARTMENT-TYPE BUILDINGS, 7 APPEAR COMPLETE, 1 IS IN A LATE STAGE OF CONSTRUCTION, AND 3 ARE IN EARLY STAGES OF CONSTRUCTION. SEVERAL ADDITIONAL RELATIVELY LARGE BUILDINGS APPEAR TO HAVE BEEN COMPLETED

25X1D

[Redacted]

25X1D

25X1A

LENINGRAD PROB LR SAM LCH CPLX SEARCH UR 5955N 03020E

ONLY A SMALL SEGMENT OF THE SEARCH AREA IS COVERED ON PHOTOGRAPHY WITH HEAVY CLOUD COVER. NO AMM/SAM LAUNCH OR ELECTRONIC FACILITIES OBSERVED IN CLOUD-FREE AREAS.

25X1D

[Redacted]

BRATSK SUSPECT ABM AREA UR 5654N 10030E

A SMALL SEGMENT OF THE SEARCH AREA IS COVERED ON CLOUD-FREE PHOTOGRAPHY. NO ABM/PROBABLE LONG RANGE SAM COMPLEXES OBSERVED.

25X1D

[Redacted]

CHERPOVETS PROB LONG RANGE SAM LCH CPLX UR 5906N 03810E

THIS TARGET WAS PROGRAMMED FOR COVERAGE ON 7 PASSES. ONE IS CLOUD COVERED AND [Redacted] CAN BE IDENTIFIED ONLY.

25X1D

SIGNIFICANT ACTIVITY OBSERVED AT THE COMPLEX DURING THE PERIOD OF THIS MISSION INCLUDES THE APPEARANCE OF MISSILES ON TRANSPORTERS WITHIN THE MISSILE-HANDLING FACILITY, A MISSILE TRANSPORTER AND A PROBABLE CRANE LOCATED ADJACENT TO THE LAUNCH POINT AT POSITION B-5, AND A MISSILE ON THE LAUNCHER AT POSITION B-1.

X1

Approved For Release TOP SECRET CIA-RDP99T01396R000300410001-5

KH-7 MISSION 4038, 5-12 JUNE 1967

25X1D ONLY A PORTION OF LAUNCH SITE D IS DISCERNIBLE THROUGH
 25X1D HEAVY CLOUD COVER [REDACTED] AND THE COMPLEX IS
 25X1D COMPLETELY CLOUD COVERED ON PHOTOGRAPHY [REDACTED]
 25X1D VARIOUS POSITIONS OF THE COMPLEX ARE VISIBLE THROUGH
 25X1D SCATTERED CLOUDS, CLOUD SHADOW, AND HAZE ON PHOTOGRAPHY
 25X1D [REDACTED] THE ENTIRE COMPLEX IS
 25X1D OBSERVED ON STEREO PHOTOGRAPHY [REDACTED] WITH
 25X1D INTERPRETATION SOMEWHAT LIMITED BY HAZE.

EACH LAUNCH POSITION OF THE 5 LAUNCH SITES IS OCCUPIED BY A LAUNCHER AND 2 MISSILE DOLLIES ARE OBSERVED EXCEPT AT CERTAIN POSITIONS WHERE MISSILE-READY SHELTERS PROBABLY COVER THEM. THE CONTROL CENTERS OF THE 5 SITES ARE OCCUPIED.

25X1D A MISSILE TRANSPORTER IS LOCATED ADJACENT TO THE LAUNCH
 25X1D POINT AT POSITION B-5 [REDACTED] A PROBABLE
 25X1D CRANE IS LOCATED BETWEEN THE TRANSPORTER AND THE
 25X1D LAUNCHER. A MISSILE WAS PROBABLY ON THE LAUNCHER AT
 25X1D THIS TIME. ONE OF THE MISSILE DOLLIES IS AT ITS USUAL
 25X1D LOCATION AT THE OPPOSITE END OF THE POSITION. [REDACTED]
 25X1D [REDACTED] THE TRANSPORTER AND POSSIBLE CRANE WERE REMOVED,
 25X1D A MISSILE WAS ON THE LAUNCHER, AND 2 MISSILE DOLLIES
 25X1D WERE AT THEIR NORMAL LOCATION. A VEHICLE, OBSERVED IN
 25X1D MOTION ON THE STEREO COVERAGE [REDACTED] TRAVELED FROM
 25X1D THE SERVICE ROAD OF LAUNCH POSITION B-1 TO A POINT OVER
 25X1D THE TRACKS DIRECTLY IN FRONT OF THE MISSILE-READY
 25X1D SHELTER. IT WAS NOT AT THIS LOCATION [REDACTED] A
 25X1D SIMILAR VEHICLE WAS PARKED ON THE TRACKS PERPENDICULAR
 25X1D TO THE 2 MISSILE DOLLIES AT LAUNCH POSITION C-1 [REDACTED]
 25X1D [REDACTED] A MISSILE OBSERVED ON
 25X1D THE LAUNCHER AT POSITION B-1 [REDACTED] IS PROBABLY
 25X1D PRESENT ON THE EARLIER PHOTOGRAPHY.

25X1D MOVEMENT OF MISSILE DOLLIES OCCURRED AT SOME OF THE
 25X1D LAUNCH POSITIONS DURING THE PERIOD OF OBSERVATION AND
 25X1D VEHICLES IN MOTION WERE OBSERVED ON LAUNCH SITE SERVICE
 25X1D ROADS. THREE COVERED MISSILES ON TRANSPORTERS, 1 IN
 25X1D MOTION, ARE ON THE ROAD ALONG THE EASTERN SIDE OF THE
 25X1D MISSILE-HANDLING FACILITY [REDACTED] THEY WERE NOT
 25X1D OBSERVED ON THE EARLIER COVERAGE. VEHICLES/PIECES OF
 25X1D EQUIPMENT ARE PARKED ON THE APRONS SERVING BUILDINGS IN
 25X1D THE MISSILE-HANDLING FACILITY. CONSIDERABLE VEHICULAR
 25X1D MOVEMENT IS EVIDENT DURING THE PERIOD. TWELVE TENTS
 25X1D ALIGNED IN 2 ROWS ARE LOCATED JUST SOUTH OF LAUNCH SITE
 25X1D C.

THE TRACKING/GUIDANCE RADAR FACILITY IS FULLY COMPLEMENTED WITH AN ENGAGEMENT RADAR AND ASSOCIATED

Approved For Release ~~TOP SECRET~~ CIA-RDP99T01396R000300410001-5

KH-7 MISSION 4038, 5-12 JUNE 1967

25X1D

VANS/PIECES OF EQUIPMENT AT EACH OF THE 5 RADAR POSITIONS AND VANS/PIECES OF EQUIPMENT OCCUPY THE CONTROL CENTER. REPETITIVE COVERAGE OF THIS FACILITY IS LIMITED, BUT NO SIGNIFICANT CHANGE IS DETECTABLE [REDACTED] A PROBABLE CALIBRATION TOWER IS LOCATED JUST SE OF THE TRACKING/GUIDANCE FACILITY.

BACK NET AND SIDE NET RADARS STILL OCCUPY THE AIR WARNING RADAR FACILITY LOCATED 4 NM WNW OF THE LAUNCH COMPLEX.

25X1D

NEW UNIDENTIFIED CONSTRUCTION ACTIVITY IS CURRENTLY UNDERWAY APPROXIMATELY 3.5 NM WNW OF THE LAUNCH COMPLEX. A RECTANGULAR STRUCTURE, MEASURING APPROXIMATELY 100 X 20 FT WHEN OBSERVED ON PHOTOGRAPHY [REDACTED] IS UNDER CONSTRUCTION WITHIN A 145 X 60-FT EXCAVATION BORDERED BY FOOTINGS. ADDITIONAL FOOTINGS AND EXCAVATIONS ARE LOCATED JUST EAST OF THIS AREA. ANOTHER AREA OF GROUND SCARRING IS LOCATED APPROXIMATELY 700 FT EAST OF THE NEW CONSTRUCTION.

(SEE ATTACHMENT)

25X1D



25X1A

25X1D

NIZHNIY TAGIL PROB LONG RANGE SAM LCH CPLX UR 5805N 06053E [REDACTED]

25X1D

THIS IS THE FIRST LARGE SCALE COVERAGE [REDACTED]

25X1D

[REDACTED] NO APPARENT CHANGE IS DISCERNIBLE

25X1D

AND NO SIGNIFICANT CHANGE HAS OCCURED [REDACTED]

25X1D

SOME CHANGES OBSERVED [REDACTED] MAY HAVE BEEN

25X1D

PRESENT, BUT WERE OBSCURED BY SNOW COVER [REDACTED]

25X1D

THE COMPLEX REMAINS IN THE MID-STAGE OF CONSTRUCTION. NO APPARENT CHANGE IS DISCERNIBLE BETWEEN THE 2 PASSES OVER THE COMPLEX.

NO SIGNIFICANT CHANGE IS OBSERVED AT THE LAUNCH AREA [REDACTED] ALTHOUGH NO RAILS ARE DISCERNIBLE, RAIL BEDS APPEAR COMPLETE AT LAUNCH SITES A AND B AND AT LAUNCH POSITIONS C5 AND C6. A CONCRETE APRON IS

KH-7 MISSION 4038, 5-12 JUNE 1967

LOCATED AT ALL LAUNCH POINTS OF LAUNCH SITES A AND B. UNIDENTIFIED OBJECTS WHICH DO NOT APPEAR TO BE LAUNCHERS ARE AT LAUNCH POINTS A2, A3, C1, AND C6.

APPROXIMATELY 12 VEHICLES/PIECES OF EQUIPMENT ARE ADJACENT TO THE TRACKING/GUIDANCE FACILITY. NO OTHER SIGNIFICANT CHANGE IS OBSERVED.

25X1D

AT THE MISSILE-HANDLING FACILITY, 2 WALLS OF A DRIVE-THROUGH BUILDING HAVE BEEN ERECTED

25X1D

A SMALL STRUCTURE HAS BEEN COMPLETED IN THE SUPPORT AREA AND WALLS FOR ANOTHER STRUCTURE ARE OBSERVED. CONSTRUCTION ACTIVITY MAY BE INCREASING AS INDICATED BY THE NUMEROUS VEHICLES/PIECES OF EQUIPMENT IN THE SUPPORT AREA.

NO MISSILES OR MISSILE-RELATED EQUIPMENT OBSERVED.

25X1D

25X1A

NIZHNYAYA TURA PROB LR SAM LAUNCH CPLX UR 5847N 05953E

THIS TARGET WAS PROGRAMMED FOR COVERAGE ON 5 PASSES. ONE IS CLOUD COVERED.

25X1D

THE COMPLEX REMAINS IN THE MID-STAGE OF CONSTRUCTION. THE ONLY SIGNIFICANT CHANGES OBSERVED AT THE COMPLEX ARE AT THE LAUNCH AREA AND THE MISSILE HANDLING FACILITY.

25X1D

A CANOPY HAS BEEN CONSTRUCTED OVER THE MISSILE DOLLY POSITIONS AT A6 CONSTRUCTION OF CANOPIES AT A2 AND B3 HAVE BEEN NEWLY BEGUN SINCE SIMILAR CANOPY WAS UNDER CONSTRUCTION BUT NOT PREVIOUSLY REPORTED.

25X1D

CONSTRUCTION OF A NEW CANOPY WAS STARTED AT A5 CONSTRUCTION CONTINUED ON THE CANOPIES ONLY CANOPIES AT A6 AND B2 ARE COMPLETE.

25X1D

25X1D

25X1D

AT THE MISSILE-HANDLING FACILITY, MOST OF THE ROOF WAS REMOVED FROM ONE OF THE DRIVE-THROUGH BUILDINGS AND WAS REPLACED

25X1D

25X1D

NO SIGNIFICANT CHANGE IS OBSERVED AT THE TRACKING/GUIDANCE FACILITY AND THE SUPPORT AREA SINCE

KH-7 MISSION 4038, 5-12 JUNE 1967

25X1D

[REDACTED]

A BUILDING UNDER CONSTRUCTION ALONG THE COMPLEX SERVICE ROAD NOW HAS 3 WALLS.

NO MISSILES OR MISSILE-RELATED EQUIPMENT OBSERVED.

25X1D

[REDACTED]

25X1A

KIMRY PROB LONG RANGE SAM LCH CPLX UR 5646N 03720E

THIS TARGET WAS PROGRAMMED FOR COVERAGE ON 6 PASSES. TWO ARE CLOUD COVERED.

CONSTRUCTION STATUS OF SITES B AND C IS ESSENTIALLY THE SAME. CONCRETE APRONS HAVE BEEN POURED FOR THE 6 LAUNCH POSITIONS AND CABLE SCARS ARE OBSERVED EXTENDING FROM THE CENTRAL CONTROL REVETMENTS TO ALL 6 LAUNCH POSITIONS AT SITES B AND C. DARK UNIDENTIFIED OBJECTS, POSSIBLY PILES OF AGGREGATE/SURFACING MATERIAL, ARE NEAR THE LAUNCH POSITIONS AT SITES B AND C. AT SITE A, IT APPEARS THAT BEDS HAVE BEEN PREPARED FOR RAIL INSTALLATIONS AT POSITIONS 2, 3, AND 5, AND CABLE SCARS EXTEND TO POSITIONS 1, 2, 4, 5, AND 6 FROM THE CENTRAL CONTROL REVETMENT. CABLE SCARS EXTEND FROM ALL 3 LAUNCH SITES TO THE TRACKING/GUIDANCE FACILITY. TWO OF THE RADAR MOUNDS HAVE A SQUARED WHITE AREA, PROBABLY CONCRETE, ATOP THEM FOR THE TRACKING/GUIDANCE RADAR. A LARGE BUILDING BETWEEN THE MISSILE-HANDLING FACILITY AND LAUNCH SITE A APPEARS NEARLY EXTERNALLY COMPLETE. SIX UNIDENTIFIED OBJECTS AND FOUNDATIONS CONSTRUCTED FOR A NEW BUILDING ARE LOCATED IN THE MISSILE-HANDLING FACILITY. A NEW CLEARING BETWEEN THE SUPPORT AREA AND THE MISSILE-HANDLING FACILITY HAS 2 SMALL BUILDINGS UNDER CONSTRUCTION.

25X1D

THE AIR WARNING FACILITY REMAINS UNOCCUPIED. NO MISSILES OR MISSILE-RELATED EQUIPMENT ARE DISCERNIBLE.

25X1D

DAY-TO-DAY CHANGES OBSERVED -- A PIECE OF EQUIPMENT AT POSITION A-4 WAS PRESENT [REDACTED] AND GONE [REDACTED]

25X1D

[REDACTED] A PIECE OF EQUIPMENT OBSERVED IN THE CENTRAL CONTROL REVETMENT [REDACTED] WAS NOT THERE [REDACTED]

25X1D

25X1D

[REDACTED]

25X1D

X1

TOP SECRET

25X
25X

KH-7 MISSION 4038, 5-12 JUNE 1967

25X1D

25X1A

PLESETSK PROB LONG RANGE SAM LAUNCH CPLX UR 6312N 04109E

THE COMPLEX IS CLOUD COVERED.

THE PREVIOUSLY IDENTIFIED POSSIBLE AIR WARNING RADAR FACILITY 4.5 NM SOUTH OF THE COMPLEX CAN NOW BE CONFIRMED. THE FACILITY CONSISTS OF 3 UNOCCUPIED RADAR MOUNDS AND 1 RADAR MOUND UNDER CONSTRUCTION.

PHOTOGRAPHIC REFERENCE IS FOR THE AIR WARNING RADAR FACILITY --

25X1D

TOMSK PROB LONG RANGE SAM LAUNCH COMPLEX UR 5636N 08433E

25X1D

THE FOLLOWING CHANGES OR ADDITIONS ARE OBSERVED SINCE [REDACTED] NEWLY IDENTIFIED AT LAUNCH SITE A ARE 2 RECTANGULAR EXCAVATIONS IN THE VICINITY OF POSITION A-2 AND 1 AT THE CENTRAL CONTROL AREA. AT SITE B, VEHICLES/PIECES OF EQUIPMENT ARE DISCERNIBLE AT POSITIONS B-1, B-5, SOUTH OF THE CENTRAL CONTROL AREA AT WHICH PRELIMINARY GROUND WORK IS UNDERWAY, AND IN THE AREA SOUTH OF THE SITE. A LINEAR STRIATION, POSSIBLY A CABLE TRENCH, EXTENDS FROM THE LAUNCH POINT AT POSITIONS B-4, B-5, B-6, AND C-4 TOWARD THE CENTER OF THE SITE. AN EARTHEN MOUND IS PRESENT AT THE CENTRAL CONTROL AREA OF LAUNCH SITE C. SIX LARGE BUILDINGS (3 NEWLY IDENTIFIED) AND AT LEAST 6 SMALL STRUCTURES IN VARIOUS STAGES OF CONSTRUCTION ARE PRESENT IN THE SUPPORT AREA NORTH OF LAUNCH SITE A. NUMEROUS VEHICLES/PIECES OF EQUIPMENT AND BUILDING MATERIALS ARE LOCATED IN THIS AREA.

A NEWLY IDENTIFIED CONSTRUCTION AREA IS LOCATED EAST OF THE MISSILE-HANDLING FACILITY ADJACENT TO THE COMPLEX PERIMETER ROAD. AT THE TRACKING/GUIDANCE FACILITY, A SMALL STRUCTURE IS PRESENT AT THE CENTRAL CONTROL AREA AND VEHICLES/PIECES OF EQUIPMENT ARE DISCERNIBLE TO THE SOUTH. VEHICLES/PIECES OF EQUIPMENT ARE DISCERNIBLE ON 2 OF THE RADAR MOUNDS AND POSSIBLY THE THIRD. AT LEAST 5 SUPPORT BUILDINGS AND NUMEROUS VEHICLES/PIECES OF EQUIPMENT ARE AT THE SW EDGE OF THE COMPLEX. NO

TOP SECRET

25X
25X

~~TOP SECRET~~

25X
25X

KH-7 MISSION 4038, 5-12 JUNE 1967

25X1D

MISSILES ARE DISCERNIBLE.

25X1A

WU-SHA-TA-LA SAM SITE A15-2

CH 4208N 05714E

EACH OF THE 6 FENCED LAUNCH POSITIONS CONTAINS AN SA-2 LAUNCHER. THE UNRETTED GUIDANCE AREA INCLUDES A FAN SONG (PROBABLE B/C-TYPE), 7 TRUCK VANS, AND 5 VAN TRAILERS. FOUR BUILDINGS AND 43 TENTS ARE LOCATED APPROXIMATELY 500 FT NORTH OF THE LAUNCH POSITIONS.

SAM-ASSOCIATED VEHICLES AND EQUIPMENT INCLUDE 6 COVERED SA-2 MISSILE TRANSPORTERS, 10 TRACKED PRIME MOVERS, 4 VAN TRAILERS, 3 PROBABLE CANISTER TRANSPORTERS, AT LEAST 6 SA-2 MISSILE CANISTERS, 6 SETS OF BOGIE WHEELS, AND APPROXIMATELY 15 UNIDENTIFIED VEHICLES. A PROBABLE SPOON REST A IS LOCATED EAST OF THE TENT AREA. ALL VEHICLES, EQUIPMENT, AND TENTS HAVE BEEN PLACED AT THE SITE SINCE IT WAS LAST PHOTOGRAPHED

25X1D

25X1D

25X1D

BOROVSK POSSIBLE ABM SUPPORT FACILITY

UR 5518N 03633E

NO COMOR

THE POSSIBLE FUNCTION OF THIS INSTALLATION (PREVIOUSLY REPORTED AS BOROVSK UNIDENTIFIED INSTALLATION), BASED ON LARGE SCALE COVERAGE, IS NOW BELIEVED TO BE THAT OF A SUPPORT FACILITY FOR THE ABM DEPLOYMENT TAKING PLACE IN THE MOSKVA AREA. THE FIRST MAJOR INDICATION OF ACTIVITY WAS OBSERVED ON PHOTOGRAPHY DURING THE SAME TIME PERIOD THAT CONSTRUCTION BEGAN ON THE ABM LAUNCH COMPLEXES. CONSTRUCTION OF THE FACILITY CONTINUED AT A STEADY PACE UNTIL WHEN CONSTRUCTION ACTIVITY DECREASED AND APPEARED TO STOP. CONSTRUCTION WAS AGAIN RENEWED ON THE FACILITY AND CONSIDERABLE PROGRESS IS NOTED ON THIS MISSION.

25X1D

25X1D

25X1D

25X1D

THE PRINCIPAL FUNCTIONAL AREAS OF THE FACILITY ARE A POSSIBLY DOUBLY-SECURED OPERATIONS AREA AND A RELATIVELY LARGE SUPPORT AREA. IN THE OPERATIONS AREA, THE MAJOR PHYSICAL FACILITIES ARE A MISSILE STORAGE BUILDING MEASURING APPROXIMATELY HIGH, A MISSILE RECEIVING/ASSEMBLY/CHECKOUT BUILDING

25X1D

~~TOP SECRET~~

25X
25X

TOP SECRET

25X
25X

KH-7 MISSION 4038, 5-12 JUNE 1967

25X1D

MEASURING APPROXIMATELY [REDACTED] HIGH, WHICH HAS BOTH A RAIL-AND-ROAD DRIVE-THROUGH CAPABILITY, AND 2 ARCH-ROOFED BUILDINGS UNDER CONSTRUCTION MEASURING

25X1D

[REDACTED] HIGH. APPROXIMATELY 10 ADDITIONAL BUILDINGS, A STEAMPLANT, AND 2 PROBABLE EARTH-MOUNDED TANKS ARE ALSO LOCATED WITHIN THE SECURED AREA. EARTH SCARRING AND CONSTRUCTION ACTIVITY ARE UNDERWAY AT VARIOUS LOCATIONS THROUGHOUT THE FACILITY.

25X1D

TWO POSSIBLE GALOSH MISSILE CANISTERS, PROBABLY WITHOUT THEIR PRIME MOVERS, ARE PARKED ON THE WEST SIDE OF THE MISSILE STORAGE BUILDING. THE POSSIBLE CANISTERS MEASURE APPROXIMATELY [REDACTED] IN LENGTH AND 10 FEET IN WIDTH.

THE SUPPORT AREA, SOUTH OF THE OPERATIONS AREA, APPEARS TO BE DIVIDED INTO 3 AREAS. THE FIRST, WHICH APPEARS PREDOMINATELY RESIDENTIAL, CONTAINS 4 COMPLETED, MULTISTORY APARTMENT-TYPE BUILDINGS, 3 MORE IN VARIOUS STAGES OF CONSTRUCTION, 1 ADDITIONAL BUILDING, AND A PROBABLE SEWAGE TREATMENT FACILITY. A SECOND AREA, WHICH APPEARS TO BE AN ADMINISTRATIVE AREA, WITH POSSIBLY SOME MECHANICAL OPERATIONS TAKING PLACE, CONTAINS 2 MULTISTORY APARTMENT-TYPE BUILDINGS, A U-SHAPED PROBABLE ADMINISTRATION BUILDING UNDER CONSTRUCTION, AND 6 ADDITIONAL MAJOR BUILDINGS. THE THIRD AREA CONTAINS 16 GABLE-ROOFED BUILDINGS AND SEVERAL SMALLER BUILDINGS/STRUCTURES.

(SEE ATTACHMENT)

25X1D



TOP SECRET

25X

25X

**Air
Facilities**

X1

[Redacted]

Approved For Release ~~TOP SECRET~~ CIA-RDP99T01396R000300410001-5

25X
25X

KH-7 MISSION 4038, 5-12 JUNE 1967

[Redacted]

25X1A

AIR FACILITIES

TIEN-YANG AIRFIELD

CH 2344N 10658E

[Redacted]

X1D

OB -- [Redacted] -- 1 CRATE ON SE PARKING APRON.

NO NEW CONSTRUCTION, CHANGES IN FACILITIES, OR
PREVIOUSLY UNREPORTED FEATURES OBSERVED.

25X1D

[Redacted]

[Redacted]

[Redacted]

25X
25X

**Nuclear
Energy**

25X2

Approved For Release 2003/05/15 : CIA-RDP99T01396R000300410001-5

Next 2 Page(s) In Document Exempt

Approved For Release 2003/05/15 : CIA-RDP99T01396R000300410001-5

**Electronics/
Communications**

X1

Approved For Release

~~TOP SECRET~~

CIA-RDP99T01396R000300410001-5

25X
25X

KH-7 MISSION 4038, 5-12 JUNE 1967

[Redacted]

ELECTRONICS/COMMUNICATIONS

DZHAMBUL SRF COMMUNICATIONS FACILITY

UR 4259N 07124E

BONUS 1

6.5 NM NORTH OF DZHAMBUL.
FACILITY CONSISTS OF A TRIPLE-SECTIONED ARCH-ROOFED
BUILDING PARTIALLY EARTH MOUNDED, A SINGLE
EARTH-MOUNDED CONTROL BUILDING, AND AN ANTENNA FIELD
CONTAINING 2 HARDENED (SUBSURFACE) ANTENNAS, NUMEROUS
FISHBONE AND DIPOLE ANTENNAS, AND AT LEAST 2
MAST-MOUNTED POSSIBLE VHF ANTENNAS. SUPPORT FOR THE
FACILITY CONSISTS OF 22 ADDITIONAL BUILDINGS.

(SEE ATTACHMENT)

25X1D

[Redacted]

[Redacted]

**Military
Activity**

TOP SECRET

KH-7 MISSION 4038, 5-12 JUNE 1967

25X1A

MILITARY ACTIVITY

MA-LI-PO SUPPLY DEPOT

CH 2307N 10443E

TWENTY-THREE CARGO TRUCKS ARE OBSERVED WITHIN AND ON THE ROAD NEAR THE INSTALLATION. NO DEFENSES OBSERVED. NO EVIDENCE OF TROOP BUILDUP, STOCKPILING OF MATERIAL, OR OTHER UNUSUAL ACTIVITY.

NO NEW CONSTRUCTION, CHANGES IN FACILITIES, OR PREVIOUSLY UNREPORTED FEATURES OBSERVED.

25X1D

HO-KOU ARMY BARRACKS NORTH

CH 2232N 10357E

OB -- 6 POSSIBLE CARGO TRUCKS.

NO EVIDENCE OF TRAINING AREAS OR TROOP ACTIVITY OBSERVED.

NO NEW CONSTRUCTION, CHANGES IN FACILITIES, OR PREVIOUSLY UNREPORTED FEATURES OBSERVED.

NO INDICATION OF TROOP OR SUPPLY BUILDUP OBSERVED.

25X1D

TOP SECRET

Complexes

KH-7 MISSION 4038, 5-12 JUNE 1967

25X1A

COMPLEXES

KUN-MING COMPLEX

CH 2504N 10241E

NO NEW INDUSTRIAL FACILITIES OR CHANGES IN EXISTING FACILITIES, CONSTRUCTION OF DEFENSES OR CIVIL DEFENSE FACILITIES, OR EVIDENCE OF ABANDONMENT OR REDUCTION OF MAJOR INDUSTRIAL OR ECONOMIC ACTIVITY OBSERVED.

RAIL ACTIVITY IN THE COMPLEX IS AT A HIGH LEVEL. THE RAIL YARD ON THE SE EDGE IS 50 PERCENT FILLED AND CONTAINS A TOTAL OF 62 CARS CONSISTING OF 37 PASSENGER, 9 BOX, AND 16 FLAT CARS. THE RAIL YARD 4.5 NM ESE IS 60 PERCENT FILLED AND CONTAINS A TOTAL OF 196 CARS CONSISTING OF 48 BOX, 90 GONDOLA/HOPPER, 10 TANK, 18 FLAT, AND 30 UNIDENTIFIED CARS. THE RAIL YARD 3.5 NM ESE IS 70 PERCENT FILLED AND CONTAINS A TOTAL OF 420 CARS CONSISTING OF 191 BOX, 63 GONDOLA/HOPPER, 15 TANK, 60 FLAT, AND 91 UNIDENTIFIED CARS.

CONSTRUCTION IS APPROXIMATELY 60 PERCENT COMPLETE ON A PROBABLE PASSENGER STATION IMMEDIATELY SOUTH OF TOWN. IT CONSISTS OF 6 TRACKS AND 3 COVERED PLATFORMS. TEN PASSENGER CARS ARE PARKED ADJACENT TO ONE OF THE SHEDS. NUMEROUS OTHER RAIL CARS ARE OBSERVED THROUGHOUT THE COMPLEX ON SMALL SIDINGS. NUMEROUS TRUCKS AND BUSES ARE WITHIN THE COMPLEX.

APPROXIMATELY 15 PERCENT OF THE SEARCH AREA IS COVERED ON PHOTOGRAPHY WITH 10 PERCENT CLOUD COVER. NO EVIDENCE OF NEW SAM ACTIVITY IS OBSERVED IN CLOUD-FREE AREAS. KUN-MING SAM SITE B23-2 [REDACTED] IS NOT COVERED.

25X1A

25X1D



25X1A

PING-HSIANG COMPLEX

CH 2207N 10646E

ROLLING STOCK OBSERVED CONSISTS OF 14 FLAT CARS CONTAINING LARGE UNIDENTIFIED PIECES OF EQUIPMENT, 41 PASSENGER CARS, AND APPROXIMATELY 300 OTHER PIECES OF ROLLING STOCK. NUMEROUS VEHICLES AND PIECES OF EQUIPMENT REMAIN PARKED THROUGHOUT THE COMPLEX AREA, INCLUDING 973 TRUCKS, 82 SMALL UTILITY TRUCKS, 21 VEHICLES/PIECES OF EQUIPMENT, 70 UNIDENTIFIED PIECES OF EQUIPMENT, AND 6 PROBABLE MORTARS. APPROXIMATELY 30 TRUCKS ARE OBSERVED ON ROADS WITHIN THE COMPLEX.

X1

[Redacted]

Approved For Release 00370714 TOP SECRET CIA-RDP99T01396R000300410001-5

25X
25X

KH-7 MISSION 4038, 5-12 JUNE 1967

[Redacted]

NO NEW CONSTRUCTION, CHANGES IN FACILITIES, OR
PREVIOUSLY UNREPORTED FEATURES OBSERVED.

25X1D

[Redacted]

[Redacted]

[Redacted]

25X
25X

Index

KH-7 MISSION 4038, 5-12 JUNE 1967

25X1A

KAPUSTIN YAR LAUNCH COMPLEX B	UR 4841N 04616E *
KAPUSTIN YAR LAUNCH COMPLEX H	UR 4848N 04620E 1
SARY-SHAGAN ANTIMISSILE TEST CENTER	UR 4602N 07334E 2
SARY-SHAGAN LAUNCH COMPLEX A (ZONE A)	UR 4625N 07252E 2
SARY-SHAGAN LAUNCH COMPLEX B (ZONE B)	UR 4559N 07231E 2
MAKAT FIELD LAUNCH POINT MRBM	UR 4758N 05342E 1
SARY-SHAGAN MRBM IMPACT AREA 3	UR 4627N 07244E 1
SARY-SHAGAN MRBM IMPACT AREA 5	UR 4608N 07240E 1
SARY-SHAGAN AMM IMPACT AREA 2	UR 4753N 06845E 1
SARY-SHAGAN AMM IMPACT AREA 4	UR 4730N 07615E 1
MOSKVA MSL & SPA PRPLN DEV CTR KHIMKI 456	UR 5554N 03726E 1
MOSKVA MSL & SPACE DEV CTR KALININGRAD 88	UR 5555N 03748E 1
OMSK ROCKET ENGINE TEST FAC GORNAYA BITIYAUR	5525N 07316E 1
PERM ROCKET MOTOR TEST FACILITY	UR 5758N 05549E 1
HU-HO-HAO-TE PROB SOL PROPL RKT MTR CPLX	CH 4044N 11158E 1
ZALARI SUSPECT ICBM COMPLEX	UR 5326N 10237E 1
SEVERODVINSK NAVAL BASE AND SHIPYARD 402	UR 6434N 03949E 2
GUBA SAYDA NAVAL MISSILE STORAGE	UR 6915N 03321E 1
GUBA SAYDA SUBMARINE BASE	UR 6915N 03320E 1
GUBA SAYDA NAVAL BASE TOROS	UR 6918N 03325E 1

25X9

GUBA LITSA SUBMARINE BASES NORTH & SOUTH	UR 6926N 03224E 1
GUBA LITSA NAVAL MISSILE STORAGE	UR 6923N 03226E 1
GUBA ANDREEVA NUCLEAR SUB SUPPORT FACILITYUR	6926N 03221E 1
MOSKVA ABM SEARCH AREA	UR 5545N 03737E 2
MOSKVA ABM LAUNCH COMPLEX E24	UR 5521N 03629E 2
MOSKVA ABM LAUNCH COMPLEX E31	UR 5607N 03629E 2
LENINGRAD PROB LR SAM LCH CPLX SEARCH	UR 5955N 03020E 2
BRATSK SUSPECT ABM AREA	UR 5654N 10030E 2
CHEREP OVETS PROB LONG RANGE SAM LCH CPLX	UR 5906N 03810E 2
NIZHNIY TAGIL PROB LONG RANGE SAM LCH CPLXUR	5805N 06053E 2
NIZHNYAYA TURA PROB LR SAM LAUNCH CPLX	UR 5847N 05953E 2
SVERDLOVSK PROB LONG RANGE SAM LCH CPLX	UR 5704N 06101E 1
KIMRY PROB LONG RANGE SAM LCH CPLX	UR 5646N 03720E 2
PERESLAVL-ZALESSEKIY PROB LR SAM LCH CPLX	UR 5645N 03838E 1
PLESETSK PROB LONG RANGE SAM LAUNCH CPLX	UR 6312N 04109E 2
TOMSK PROB LONG RANGE SAM LAUNCH COMPLEX	UR 5636N 08433E 2
KAPUSTIN YAR PROB LONG RANGE SAM LCH CPLX	UR 4832N 04602E 1
WU-SHA-TA-LA SAM SITE A15-2	CH 4208N 05714E 2
BOROVSK POSSIBLE ABM SUPPORT FACILITY	UR 5518N 03633E 2
BORSHCHEV PROB LONG RANGE SAM LAUNCH CPLX	UR 4846N 02602E 1
KUN-MING/WU-CHIA-PA AIRFIELD	CH 2459N 10244E 1
TIEN-YANG AIRFIELD	CH 2344N 10658E 2

25X9

X1

Approved For Release

~~TOP SECRET~~

CIA-RDP99T01396

R000300410001-5

25X
25X

25X1A

KH-7 MISSION 4038, 5-12 JUNE 1967

[Redacted]

25X9

[Redacted]

[Redacted]

DZHAMBUL SRF COMMUNICATIONS FACILITY	UR 4259N 07124E 2
MA-LI-PO SUPPLY DEPOT	CH 2307N 10443E 2
HO-KOU ARMY BARRACKS NORTH	CH 2232N 10357E 2
KUN-MING COMPLEX	CH 2504N 10241E 2
PING-HSIANG COMPLEX	CH 2207N 10646E 2

[Redacted]

25
25

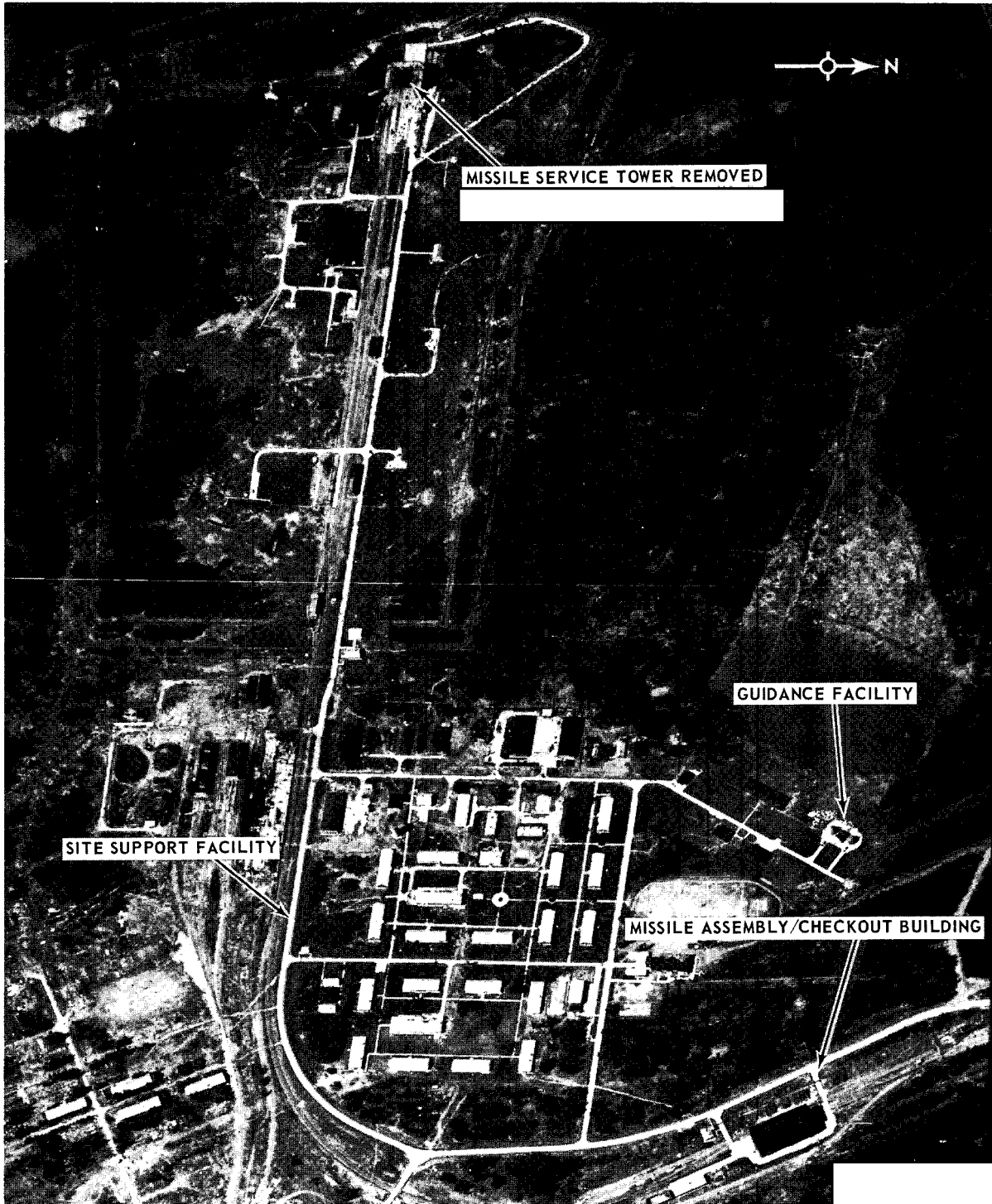
Attachments

TOP SECRET

X1

25X

25X1D



LAUNCH SITE 3, PLESECK ICBM COMPLEX, USSR

25X1A

TOP SECRET

25

~~TOP SECRET~~

CIA-RDP99T01396R000300410001-5

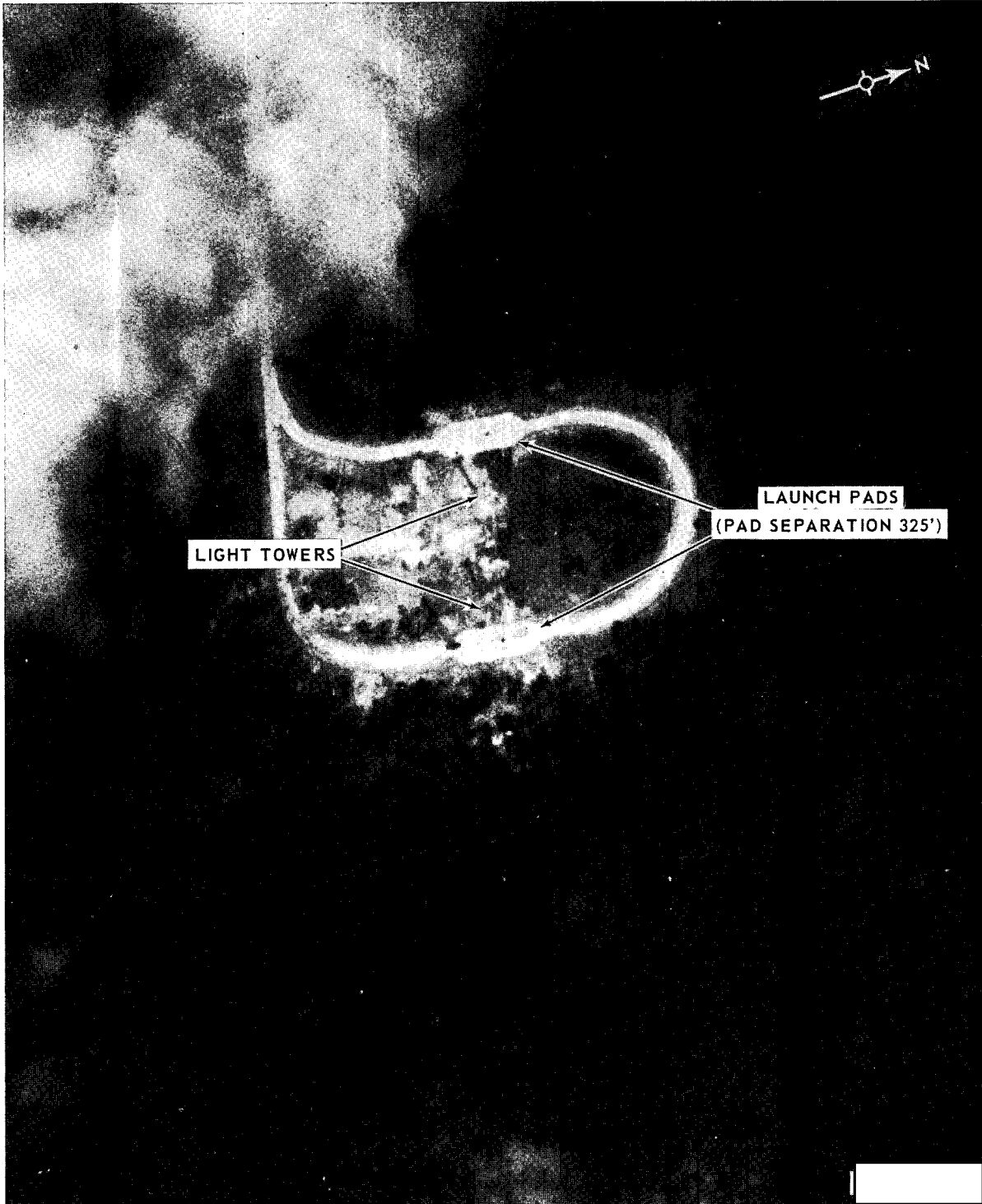
R000300410001-5

KH-7 MISSION 4038, 5-12 JUNE 1967

ATTACHMENT 2

X1

25X



LAUNCH SITE 16, PLESETSK ICBM COMPLEX, USSR

[Redacted]

25X1A

25X

~~TOP SECRET~~

CIA-RDP99T01396R000300410001-5

R000300410001-5

25X

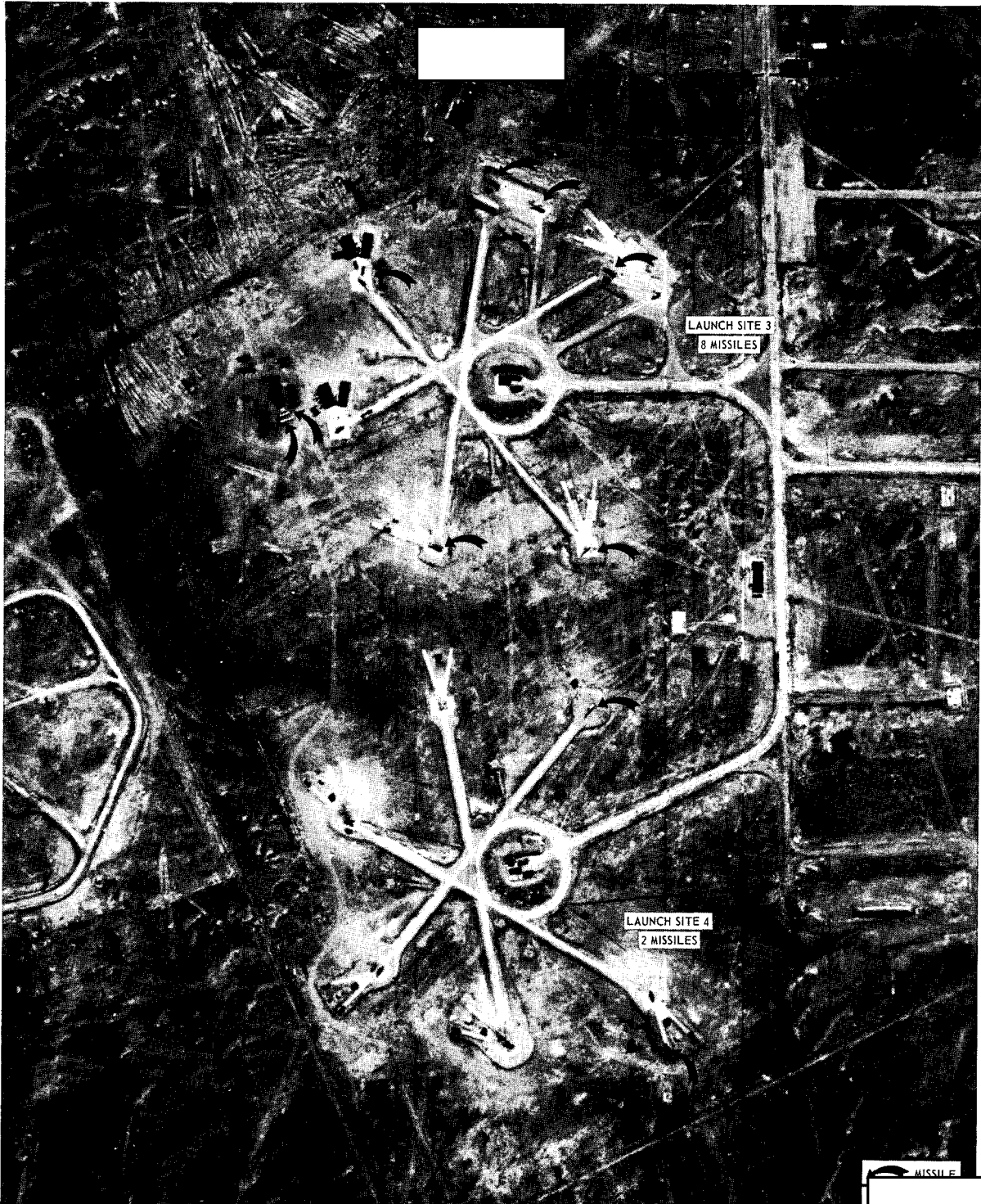
25X

[Redacted]

X1

25X

25X1D



LAUNCH COMPLEX A, SARY-SHAGAN ANTIMISSILE TEST CENTER, USSR

25X1A

25

25X
25

X1

Approved For Release

TOP SECRET CIA-RDP99T01396R000300410001-5

KH-7 MISSION 4038, 5-12 JUNE 1967

ATTACHMENT 4

25X

25X1D



LAUNCH COMPLEX A, SARY-SHAGAN ANTIMISSILE TEST CENTER, USSR

[Redacted]

[Redacted]

25X

25X1A

Approved For Release TOP SECRET CIA-RDP99T01396R000300410001-5

[Redacted]

[Redacted]

25X

25X

X1

Approved For Release 2006/05/17 : CIA-RDP99T01396R000300410001-5

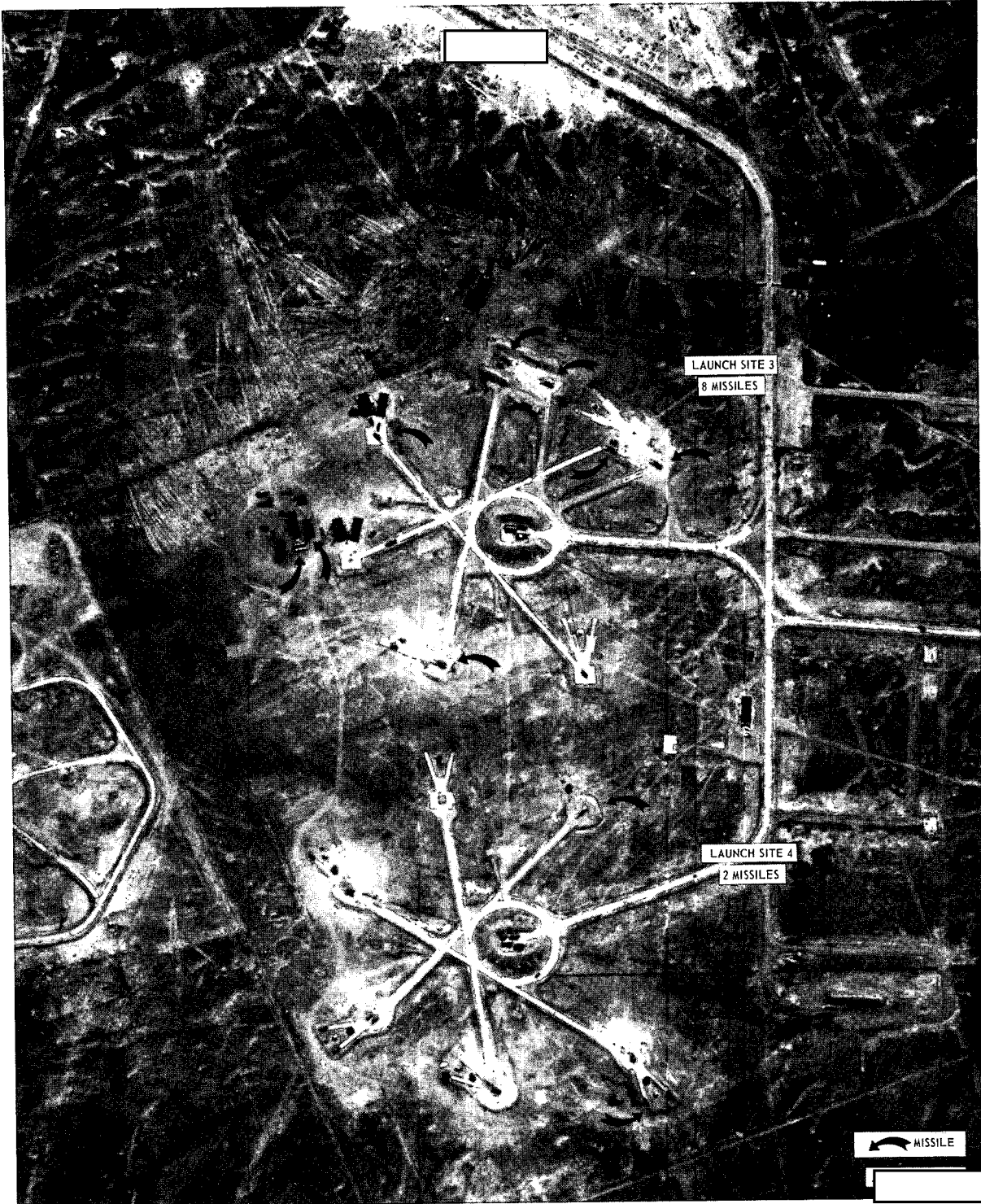
TOP SECRET

KH-7 MISSION 4038, 5-12 JUNE 1967

ATTACHMENT 5

25X

25X1D



LAUNCH COMPLEX A, SARY-SHAGAN ANTIMISSILE TEST CENTER, USSR

25X1A

25X

Approved For Release 2006/05/17 : CIA-RDP99T01396R000300410001-5

TOP SECRET

25X

X1

Approved For Release ~~TOP SECRET~~ : CIA-RDP99T01396R000300410001-5

KH-7 MISSION 4038, 5-12 JUNE 1967

ATTACHMENT 6

25X

25X1D



LAUNCH COMPLEX A, SARY-SHAGAN ANTIMISSILE TEST CENTER, USSR

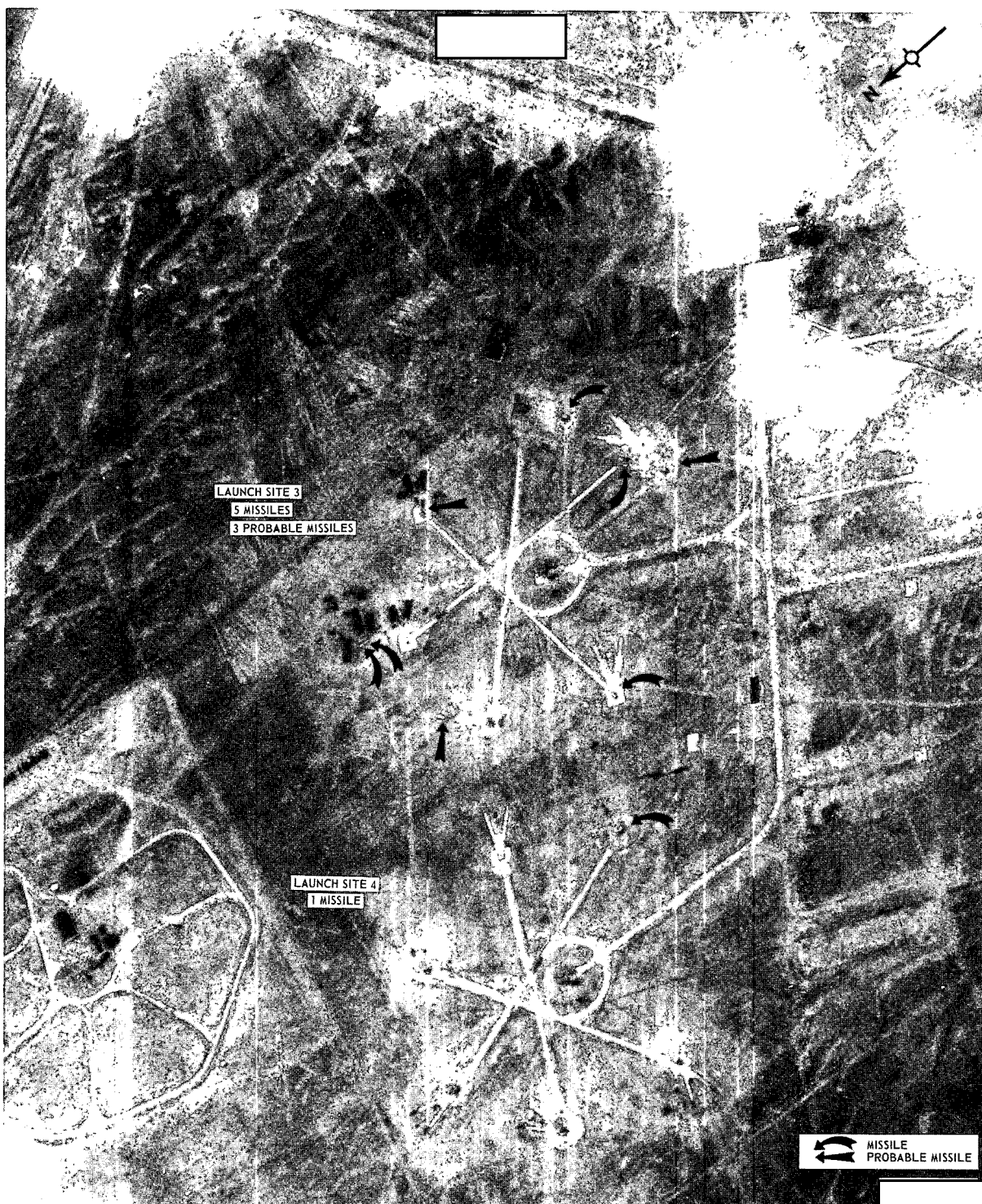
25X1A

25X

Approved For Release ~~TOP SECRET~~ : CIA-RDP99T01396R000300410001-5

25X

25X1D



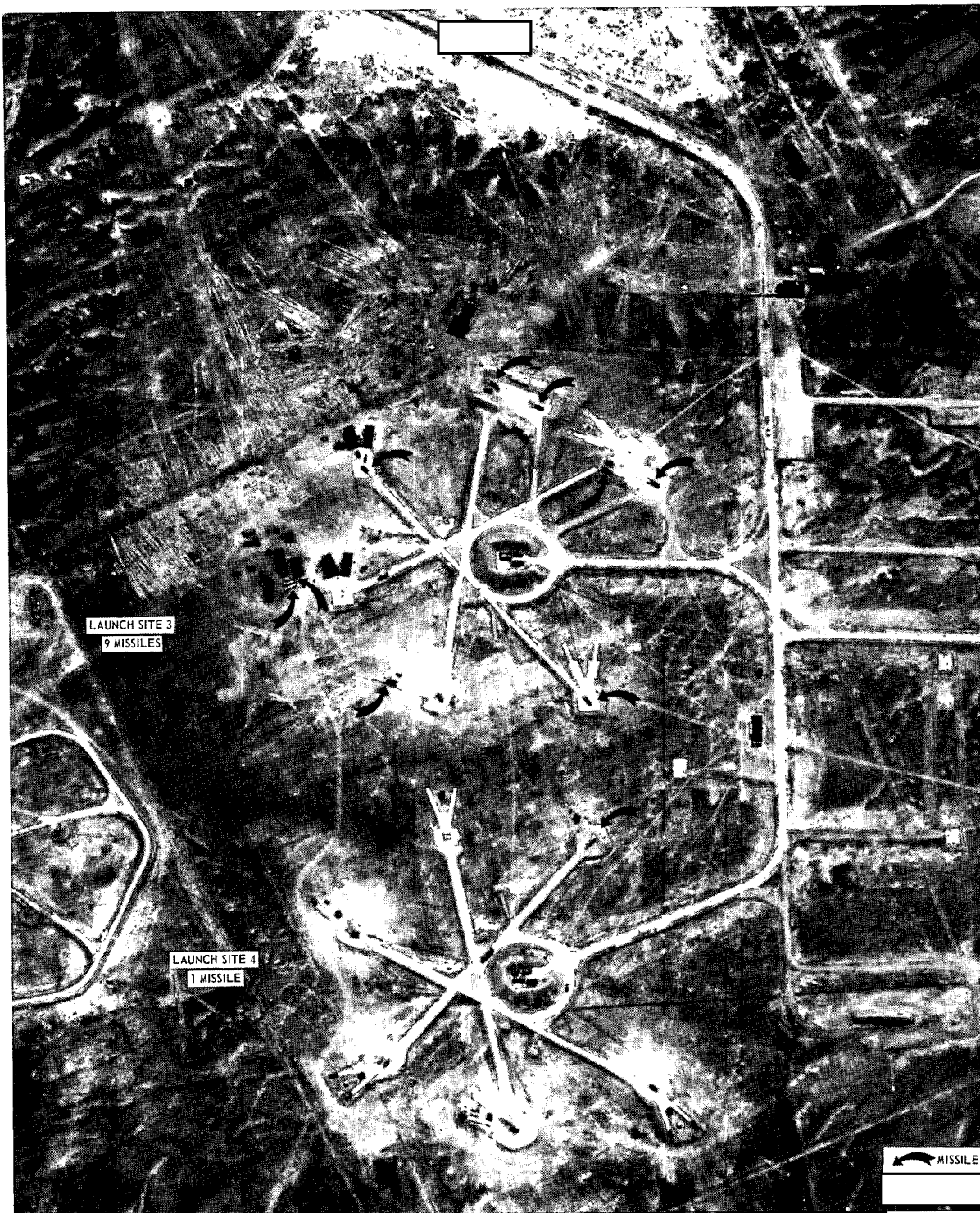
LAUNCH COMPLEX A, SARY-SHAGAN ANTIMISSILE TEST CENTER, USSR

25X1A

X1

25X

25X1D



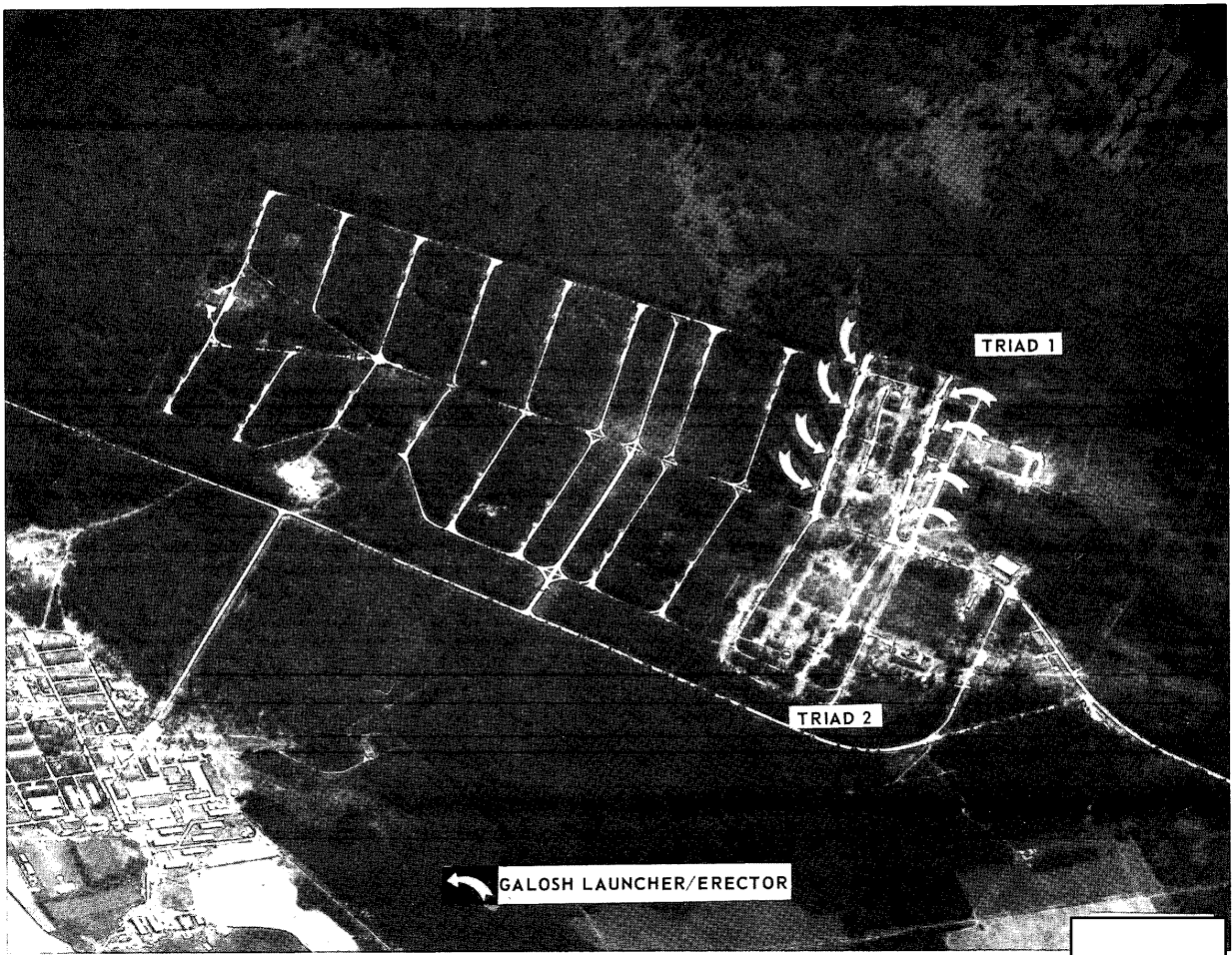
LAUNCH COMPLEX A, SARY-SHAGAN ANTIMISSILE TEST CENTER, USSR

25X1A

25X

25X

25X1



ABM LAUNCH COMPLEX E-24, MOSKVA, USSR

TOP SECRET

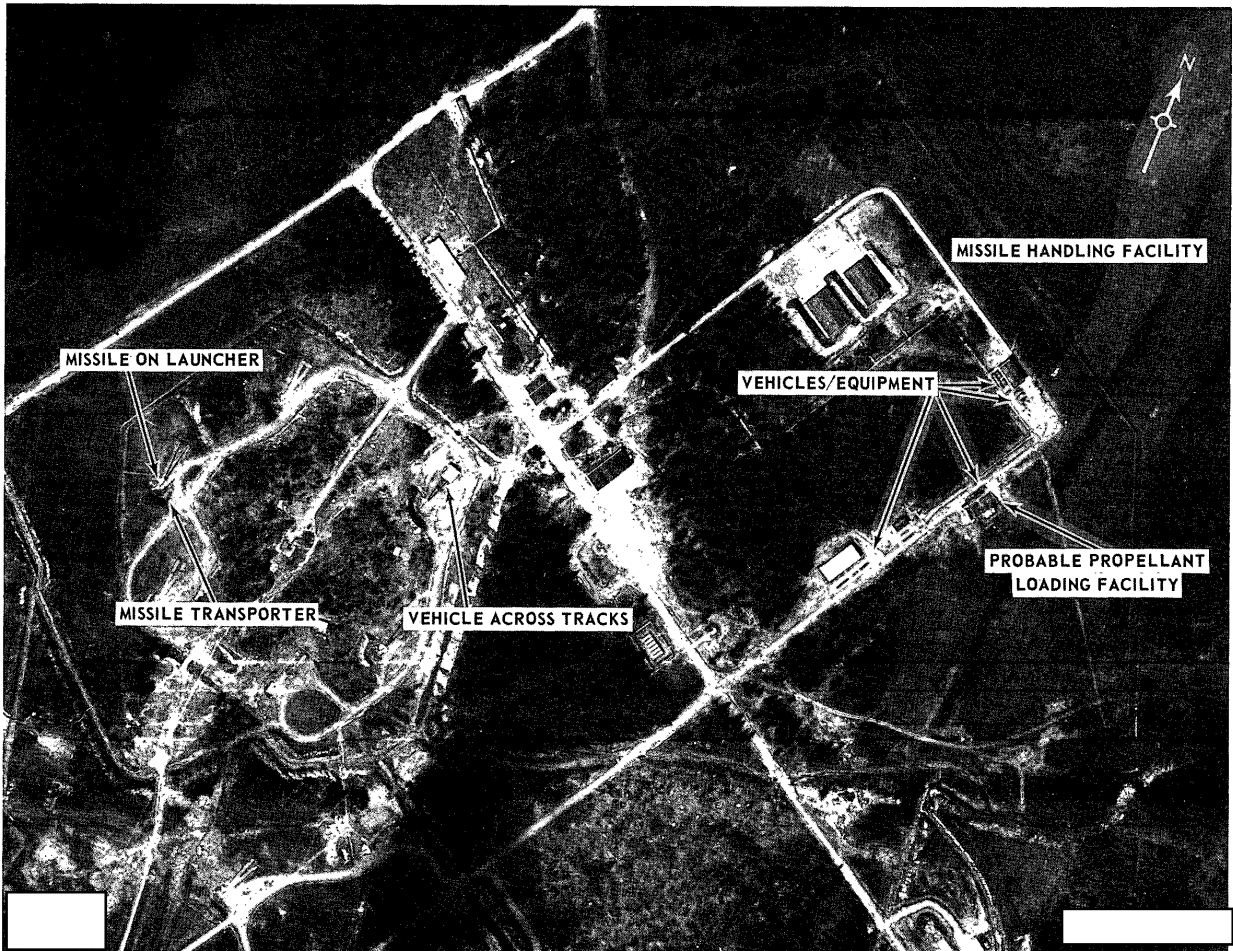
KH-7 MISSION 4038, 5-12 JUNE 1967

ATTACHMENT 10

TOP SECRET

25X1A

25X1



PROBABLE LONG RANGE SAM LAUNCH COMPLEX, CHEREPOVETS, USSR

25X1D

25X1A

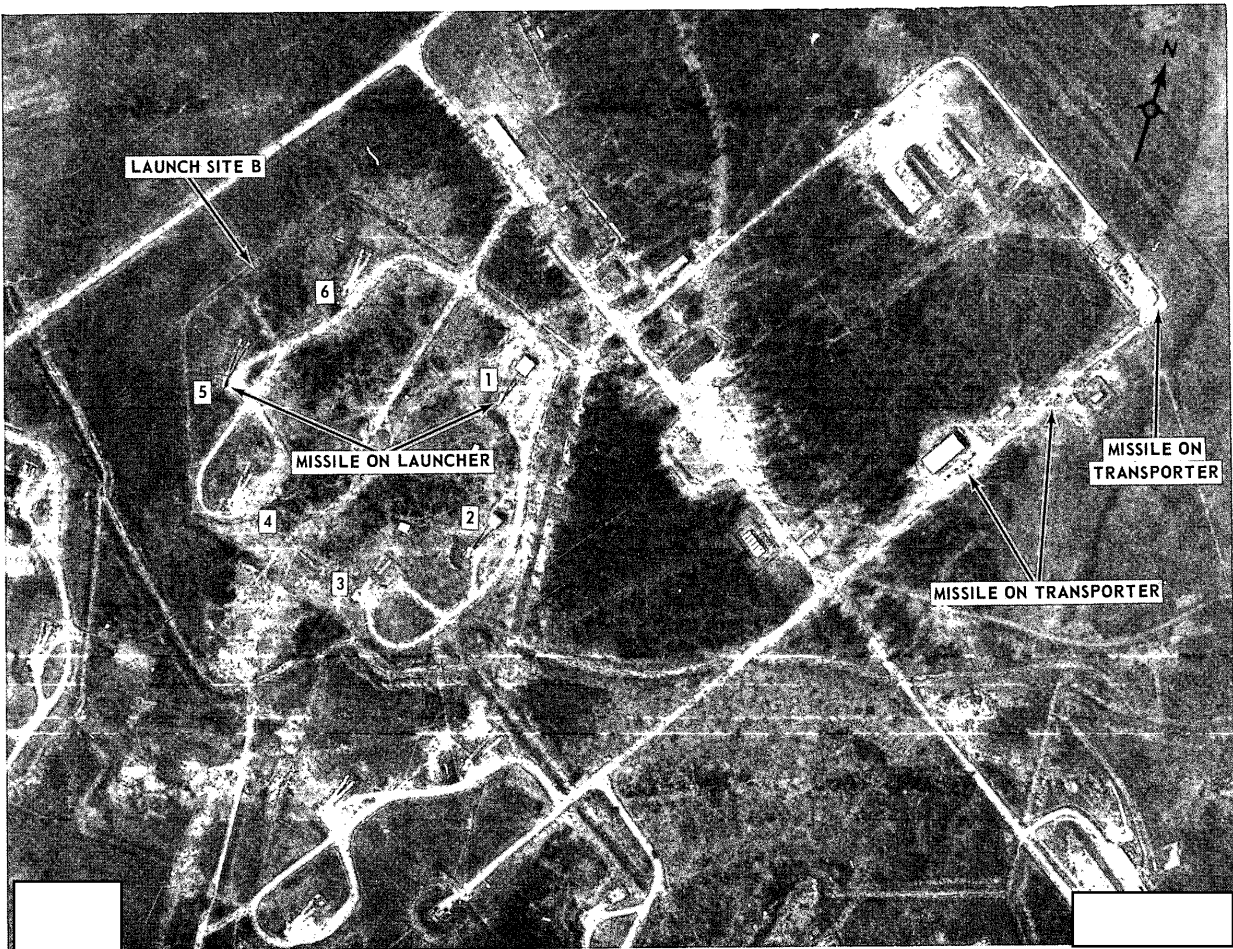
TOP SECRET

TOP SECRET

KH-7 MISSION 4038, 5-12 JUNE 1967

ATTACHMENT 11

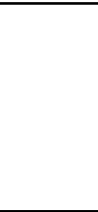
25X1



PROBABLE LONG RANGE SAM LAUNCH COMPLEX, CHEREPOVETS, USSR

25X1D

25X1A



TOP SECRET

KH-7 MISSION 4038, 5-12 JUNE 1967

ATTACHMENT 12

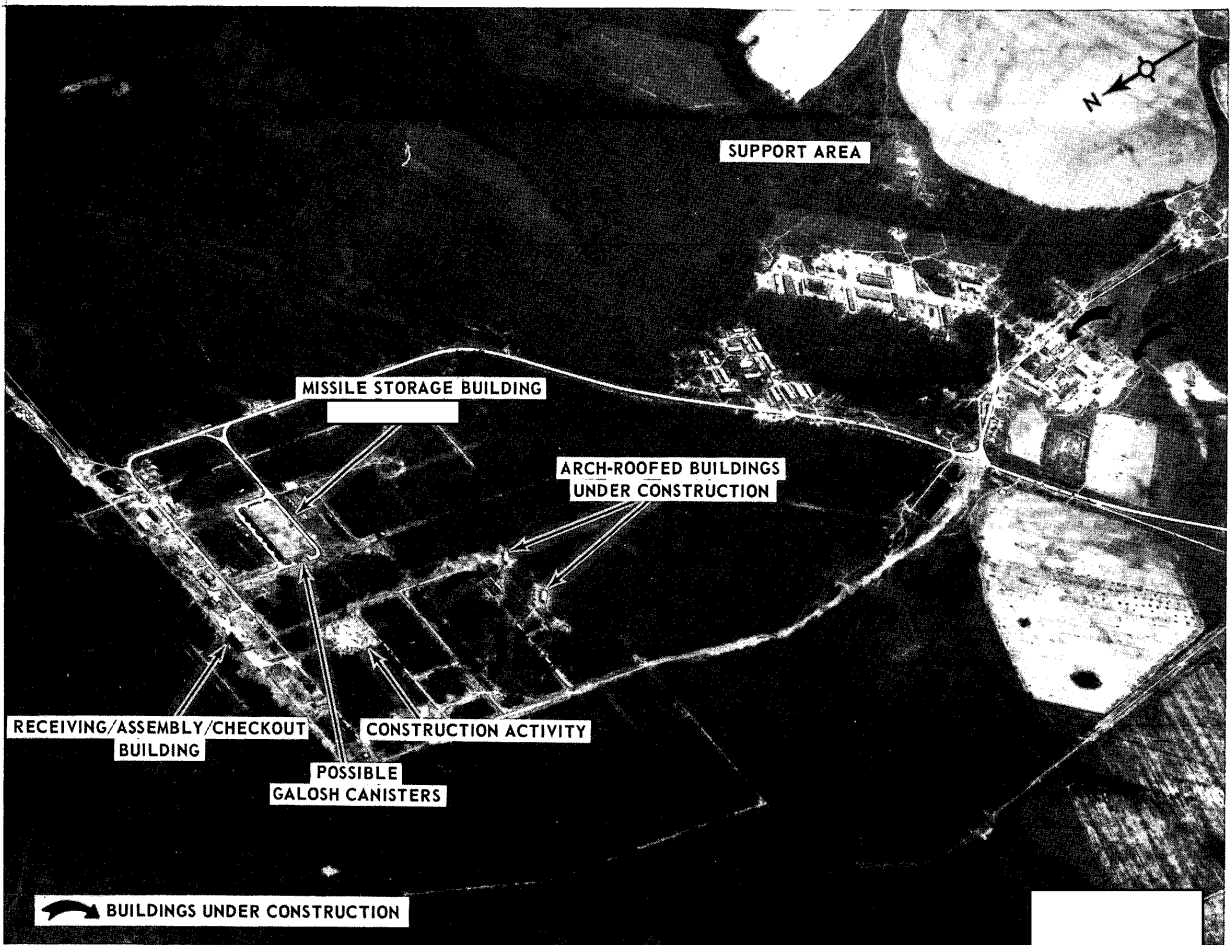
25X1

TOP SECRET



25X1

25X1



25X1D

TOP SECRET

TOP SECRET X1

KH-7 MISSION 4038, 5-12 JUNE 1967

ATTACHMENT 13

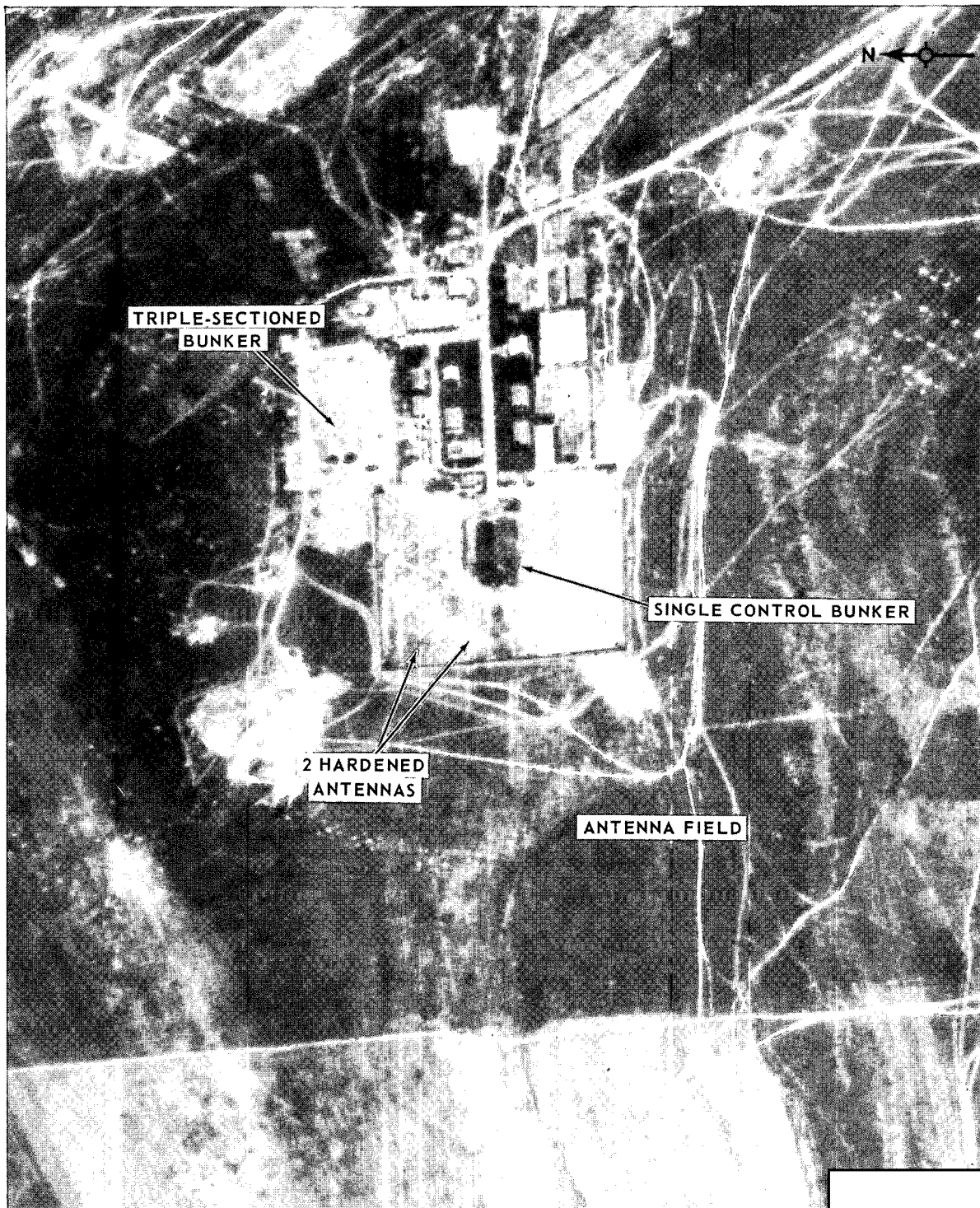
25X1

POSSIBLE ABM SUPPORT FACILITY, BOROVS, USSR (NO COMOR)

25X2

Approved For Release 2003/05/15 : CIA-RDP99T01396R000300410001-5

Approved For Release 2003/05/15 : CIA-RDP99T01396R000300410001-5



SRF COMMUNICATIONS FACILITY, DZHAMBUL, USSR (ELECTRONIC BONUS)

25X6

Approved For Release 2003/05/15 : CIA-RDP99T01396R000300410001-5

Approved For Release 2003/05/15 : CIA-RDP99T01396R000300410001-5