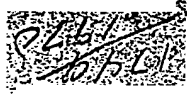
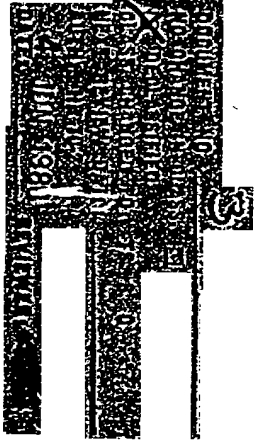


13630

CIA HISTORICAL REVIEW PROGRAM  
RELEASE AS SANITIZED  
1999

BREEDING HANDBOOK  
OF  
SELECTED ECONOMIC DATA



~~WARNING~~

This material contains information affecting the National Defense of the United States within the meaning of the espionage laws, Title 18, USC, Secs. 793 and 794, the transmission or revelation of which in any manner to an unauthorized person is prohibited by law.

BRIEFING HANDBOOK  
OF  
SELECTED ECONOMIC DATA

~~SECRET~~

TO: Holders of Briefing Handbook of Selected Economic Data  
FROM: Chief, Publications Staff, ORR  
SUBJECT: Revision of Briefing Handbook of Selected Economic Data

Your Briefing Handbook of Selected Economic Data can be kept up to date by removing the old pages and by inserting the new pages in your loose-leaf binder. These pages contain selected information of current interest.

~~SECRET~~

FOREWORD

This handbook has been prepared for briefing purposes and contains current comparative estimates for certain significant commodities and economic factors for the countries of the Sino-Soviet Bloc and for NATO.

Unless otherwise indicated, data for the countries of the Sino-Soviet Bloc are ORR estimates or accepted estimates from other sources as of the date appearing at the upper right-hand corner of each page. Totals for NATO, which includes the US, are in many cases preliminary, based on publications of the UN and the OEEC or on other sources. The estimates for the Sino-Soviet Bloc and NATO are reviewed three times each year, and revisions are circulated as necessary.

Blanks in any of the tables indicate that information is lacking concerning either the existence of data or the existence of specific quantities. The symbol N.A. (Not Available) is used to indicate that data exist but that the quantity is not known. The symbol Negl. is used to indicate that data exist but that the quantity is relatively insignificant when compared with similar data for other countries. Totals are summations of available data, and no estimates of unavailable data have been included in the totals.

The totals have been computed from unrounded data and are not necessarily the sum of the rounded components shown. Unless otherwise indicated, tonnages are given in metric tons (mt), and monetary values are current.

**BLANK PAGE**



CONTENTS

	<u>Page</u>
Gross National Product, Average Annual Growth, and GNP Per Capita, Selected Years, 1950-65 . . . . .	1
Distributive Shares of Gross National Product in the USSR, 1959 . . . . .	2
Gross Investment in Industry in the USSR and the US, 1960 . . . . .	3
Indexes of Industrial Production for the US, Selected Western Countries, and the Sino-Soviet Bloc, 1950 and 1955-60 . . . . .	4
Official Indexes of Gross Industrial Production for the Sino-Soviet Bloc, 1950, 1955-60, and 1965 Plan . . . . .	5
Production of Primary Aluminum, 1950, 1955-60, and 1965 Plan . . . . .	6
Production of Refined Copper, 1950, 1955-60, and 1965 Plan . . . . .	7
Production of Pig Iron, 1950, 1955-60, and 1965 Plan . . . . .	8
Production of Crude Steel, 1950, 1955-60, and 1965 Plan . . . . .	9
Production of Selected Agricultural Commodities, 1960 . . . . .	10
Production of Manufactured Items, 1960 . . . . .	11
Services, 1960 . . . . .	12
Trade, 1960 . . . . .	13
Military End Items, 1960 . . . . .	14
Production of Energy and Fuels, 1960 . . . . .	15



US Government Economic Aid and Sino-Soviet Bloc Aid to Selected Free World Countries, 1 July 1955 - December 1960 . . . . .	16
Population of the Sino-Soviet Bloc, the US, and NATO, Selected Years, 1938-75 . . . . .	17
Military Age Group, Size of Armed Forces, and Civilian Labor Force, Selected Years, 1956-66 . . . . .	18
Production of Major Industrial Commodities and Grain in Communist China, 1952-60 . . . . .	19
Production of Major Industrial Commodities and Grain in Communist China, India, the USSR, and the US, 1959 . . . . .	20

Page

8



Gross National Product, a/ Average Annual Growth,  
and GNP Per Capita  
Selected Years, 1950-65

February 1961

Country	Billion 1955 US \$										Average Annual Increase <u>b/</u> (Percent)		GNP Per Capita <u>c/</u> (1955 US \$)	
	1950	1955	1956	1957	1958	1959	1960	1965 Plan	1951-60	1961-65	1960	1965		
NATO														
US	538	674	695	714	708	747	770	840	4	3	2,400	2,800		
Canada	322	398	405	413	404	431	440	480	4	4	1,800	2,100		
European NATO <u>d/</u>	21.7	27.1	29.7	29.5	29.7	31.4	33.0	35.0	4	4	1,000	1,200		
Of which:	194	249	260	271	274	285	300	320	4	4	800	900		
Belgium	9.2	10.8	11.2	11.5	11.4	11.7	12.0	12.0	3	3	1,300	1,500		
Denmark	4.7	5.1	5.2	5.5	5.6	5.9	6.2	6.2	4	4	1,300	1,500		
France	39.3	48.6	51.1	54.3	55.2	58.4	60.0	65.0	4	4	1,300	1,500		
Italy	23.6	31.5	32.8	34.9	35.4	38.4	40.0	43.0	5	5	810	910		
Netherlands	8.6	11.4	11.9	12.1	12.3	13.0	13.4	14.9	5	5	1,200	1,400		
Norway	3.6	4.3	4.6	4.8	4.8	5.0	5.2	5.5	2	2	1,400	1,600		
UK	58.0	66.3	67.2	68.6	68.6	70.7	72.5	76.6	2	2	1,400	1,600		
West Germany	37.4	57.8	61.6	64.9	67.0	71.3	76.6	81.0	7	7	1,400	1,600		
Sino-Soviet Bloc	189	220	233	239	331	351	351	351						
USSR	112	136	158	175	192	199	199	199						
Communist China	31.4	48.5	53.8	56.3	66.7	74.5	83	83						
North Korea	N.A.	0.77 <u>e/</u>	0.82	1.13	1.3	1.5	1.5	1.5						
North Vietnam	N.A.	N.A.	0.96	1.13	1.3	1.5	1.5	1.5						
European satellites <u>b/</u>														
Bulgaria	44.3	60.2	60.7	65.5	69.3	71.2	77.4	81.6	10.2	10.2	120	170		
Czechoslovakia	2.1	3.2	3.2	3.5	3.8	4.4	4.6	4.6	6.9 <u>e/</u>	11.8	180	280		
East Germany	9.6	11.6	12.1	12.8	13.6	14.2	14.8	14.8	7.0	7.0	94	120		
Hungary	11.0	15.5	16.0	16.8	18.0	19.3	20.2	20.2						
Poland	4.1	5.6	5.3	5.8	6.2	6.6	6.9	6.9						
Rumania	12.8	16.5	17.3	18.6	20.0	20.8	21.7	21.7						
	4.7	7.8	8.8	8.0	7.7	8.9	9.2	9.2						

a. Gross national product (GNP) is a measure of the physical volume of goods and services produced by the economy, expressed in terms of market value at constant prices.

b. Average annual rates of growth are computed at the compound interest rate for the stated period, including the terminal years.

c. Based on estimates of mid-year population.

d. The dollar values of GNP for the European NATO countries in 1955 are estimates of Milton Gilbert and Associates, using the geometric mean of European and US weights. Estimates for other years were obtained by multiplying the 1955 data in dollars by indexes of GNP at constant domestic prices for the respective countries.

e. Estimated GNP for 1965.

f. 1949.

g. The base year is 1949.

h. The values for the European satellites have been calculated in such a manner as to make them reasonably comparable with the values shown for the European NATO countries and therefore should not be compared with dollar values for Western countries that are obtained by applying the official rates of exchange.

i. Preliminary estimates.

j. Based on the planned average annual rates of growth of national income. These rates have been reduced by one percentage point as a rough allowance for the exclusion of governmental and personal services under the Communist concept of national income. Such services are expected to grow much less rapidly than the goods and services covered by the plan.

- 1 -

~~SECRET~~

**BLANK PAGE**

Gross Investment in Industry  
in the USSR and the US  
1960

February 1961

Country	Billion 1955 US \$
USSR a/	35.7
US b/	19.7

a. Industry in the USSR covers manufacturing, mining, and electric power. Urban distribution of electric power is not included. Soviet industrial investment in 1960 (excluding investment in the construction industry) is estimated at 150 billion 1955 rubles, which is equal to US \$35.7 billion at the conversion rate of 4.2 rubles to US \$1. The major difference between this estimate and that given in the September 1960 revision of the Briefing Handbook is due to the change in the conversion ratio from 5.9 rubles to US \$1 to 4.2 rubles to US \$1. Continuing research in this area is expected to produce further refinement of this estimate.

b. Anticipated US investment for 1960 in new plant and equipment for manufacturing, mining, public utilities, oil and gas drilling, and other industrial investment not classified in the survey of capital expenditures are estimated as follows (Department of Commerce, Survey of Current Business, Dec 1960):

	Billion Current US \$
Manufacturing	14.5
Mining	1.0
Public utilities	5.7
Oil and gas drilling and other	2.0
Industry not included above	
Total	23.2

The deflator of 117.6 used to derive the value in 1955 US dollars was based on the 1960 deflator for new construction and producers durables (Department of Commerce, Office of Business Economics).

Indexes of Industrial Production a/ for the US,  
Selected Western Countries, and the Sino-Soviet Bloc  
1950 and 1955-60

February 1961

Country	1925=100										Average Annual Increase b/ (Percent) 1952-60
	1925	1935	1936	1937	1938	1939	1940	1941	1945	1950	
Selected Western Countries											
US c/	100	129	134	135	122	141	141	145	145	145	4
France	100	121	144	126	163	171	171	185	185	185	6
Italy	100	121	144	126	163	171	171	185	185	185	9
UK	100	121	144	126	163	171	171	185	185	185	3
West Germany	100	179	193	204	211	225	225	248	248	248	10
Sino-Soviet Bloc											
USSR d/	100	167	164	198	213	231	231	231	231	231	8.9
Communist China e/	100	269	343	369	516	666	666	666	666	666	23.9
European Satellites f/											
Bulgaria	100	156	163	179	198	216	216	234 B/	234 B/	234 B/	8.9
Czechoslovakia	100	165	184	210	234	268.2	268.2	312 B/	312 B/	312 B/	12.1
East Germany	100	135	144	144	179	189	189	206 B/	206 B/	206 B/	7.5
Hungary	100	171	181	193	212	235	235	239 B/	239 B/	239 B/	9.6
Poland	100	158	168	183	198	212	212	229 B/	229 B/	229 B/	9.6
Rumania	100	155	166	184	209	229	229	260 B/	260 B/	260 B/	8.6

a. Indexes for the US, France, Italy, the UK, and West Germany are value-added weighted indexes of intermediate and final products of industry. Industry includes manufacturing and mining and, in most countries, public utilities. The index for the UK includes construction, whereas the indexes for the other Western countries exclude construction. The indexes of the Sino-Soviet Bloc are calculations of this Office (or other calculations accepted by this Office) and are constructed as nearly as possible on the same basis as the indexes for Western countries. The indexes for the Bloc include manufacturing, mining, and public utilities.

b. Average annual rates of growth are computed at the compound interest rate for the stated period, including the terminal years.

c. This index is the revised industrial production index of the US Federal Reserve Board, which includes utilities. The three sectors covered -- materials, machinery, and consumer goods -- comprise 44.6 percent, 34.0 percent, and 21.4 percent, respectively, of the value-added weights for industrial production. This index is as comparable as data will permit with the index of industrial production of the US Federal Reserve Board.

d. Estimates of this Office computed by applying value-added weights to figures for commodity production, except in the case of handicrafts production, 1925-57, where the official gross value series in constant 1925 prices was used.

e. Indexes for Czechoslovakia and East Germany through 1957 and for Poland through 1955 are from private studies; indexes for subsequent years are estimates of this Office. Official estimates are accepted by this Office. Indexes for Rumania, Bulgaria, and the European satellites as a group are estimates of this Office. Indexes for Bulgaria and Rumania are estimates of this Office. Handicrafts production is covered explicitly only in the index for Poland. The weighted index for the European satellites excludes Albania.

f. Preliminary estimates.

Official Indexes of Gross Industrial Production a/  
for the Sino-Soviet Bloc  
1950, 1955-60, and 1965 Plan

February 1961

Country	1950-1960										Average Annual Increase %/ (Percent) 1951-60
	1950	1955	1956	1957	1958	1959	1960	1965 Plan			
Sino-Soviet Bloc	100	185	205	226	249	277	305	448		11.8	
USSR	100	287	308	410	661	948	1,223	N.A.		28.5	
Communist China	100	164	208	302	413	632	733	1,411		22.1	
North Korea	N.A. g/	100	193	291	316	414	493	1,228		37.6	
North Vietnam											
European Satellites											
Albania	100	274	399	375	448	536	584	882		19.3	
Bulgaria	100	190	210	233	287	358	405	N.A.		15.0	
Czechoslovakia	100	170	186	205	228	253	281	438		10.9	
East Germany	100	190	202	217	241	271	293	453		11.3	
Hungary	100	185	167	195	216	239	270	356		10.4	
Poland	100	212	231	254	278	303	333	506		12.8	
Rumania	100	202	225	243	267	294	340	617		13.0	

a. These indexes are measures of the "gross" value of production of industry at constant prices. Gross value of production is, in general, the sum of the value of output of all industrial enterprises. The definition of industry in Communist countries includes manufacturing, mining, and public utilities. The Communist definition of industry also includes other activities (varying from country to country) that are not included in Western definitions of industry.

b. Average annual rates of growth are computed at the compound interest rate for the stated period, including the terminal years.

c. Plan for 1960.

d. Based on the average rate of growth implied by an official plan index for 1967.

e. The base year for this index is 1955, the first postwar year. These official index numbers are not indicative of the true rate of industrial growth, because they reflect in large measure the increases in output resulting from postwar reconstruction rather than from new industrial development.

f. Preliminary estimates.

Production of Primary Aluminum a/  
1950, 1955-60, and 1965 Plan

February 1961

Country	Thousand Metric Tons									
	1950	1955	1956	1957	1958	1959	1960	1965 Plan		
NATO										
US	1,210	2,400	2,570	2,510	2,480	2,880	3,050			
Sino-Soviet Bloc	651.9	1,420.4	1,523.1	1,495.2	1,420.8	1,771.2	1,830	1,400 to 1,500 b/		
USSR	172	549	592	624	681	815	947	250 b/		
Communist China	155	430	465	487	513	600	700			
European Satellites	0	10	15	39	49	70	84			
Czechoslovakia	17.5	109	112	97.8	122	145	163			
East Germany	0	24.4	21.2	16.7	26.4	41.0	55			
Hungary	0.8	26.9	34.3	34.7	34.1	35.1	35.5			
Poland	16.7	37.0	34.8	26.0	39.5	45.7	47.5			
Rumania	0	20.4	21.8	20.4	22.4	22.8	25			
	0	0	0	0	0	0	0	25 to 30		

a. Data refer to production of primary (virgin) aluminum from domestic and imported ores.  
b. Estimated plan for 1965.



Production of Pig Iron <sup>a/</sup>  
1950, 1955-60, and 1965 Plan

February 1961

Country	Thousand Metric Tons									
	1950	1955	1956	1957	1958	1959	1960	1965 Plan		
NATO										
US	98,900	130,000	132,000	136,000	113,000	120,000	140,000			
Sino-Soviet Bloc	60,211	71,906	70,461	71,975	52,415	53,100	64,500			
USSR	25,000	46,200	50,800	53,500	64,700	76,400	90,800			
Communist China	19,200	33,310	35,754	37,039	39,600	48,972	50,800			
North Korea	978	3,872	4,285	5,940	13,690 b/	20,500 c/	47,100			65,000 to 70,000
European Satellities	190	112	187	270	380	585	750			
Bulgaria	4,600	8,860	9,460	10,200	11,100	12,400	15,400			
Czechoslovakia	0	0	0	54	91	177	210			21,500
East Germany	1,951	2,982	3,882	3,563	3,774	4,245	6,675			7,100
Poland	337	1,517	1,574	1,663	1,775	1,898	1,980			2,150
Rumania	461	868	755	833	1,082	1,104	1,300			1,600
	1,533	2,920 e/	3,263 e/	3,430 e/	3,592 e/	4,080 e/	4,300			6,620 e/
	320	570	563	686	737	846	950			2,000

a. Unless otherwise indicated, data refer to the total production of pig iron and blast furnace ferroalloys.  
 b. Including 4.16 million metric tons of "native iron."  
 c. Including 9.6 million metric tons of pig iron made in "small modern blast furnaces," of which 5.9 million metric tons were usable for production of steel.  
 d. Approximately one-half of the pig iron was produced in "small modern blast furnaces." Polish official data for production of pig iron are expressed in terms of basic OH pig iron, thus giving figures that are considerably greater than actual production. The factors used by the Polish to inflate production of pig iron were as follows:

Pig iron for OH steel x 1.0  
 Pig iron for foundry steel x 1.5  
 Spiegeleisen x 2.5  
 Ferrumanganese x 2.5



Production of Crude Steel a/  
1950, 1955-60, and 1965 Plan

February 1961

Country	Million Metric Tons									
	1950	1955	1956	1957	1958	1959	1960	1965 Plan		
NATO	140	184 <sup>b</sup>	188	190	160	175	214			
US	87.85	106.17	104.52	102.25	77.34	84.77	90			
Sino-Soviet Bloc	36.6	62.5	68.7	72.9	80.7	93.2	105			
USSR	27.30	45.27	48.70	51.94	54.92	59.95	65	86.0 to 91.0		
Communist China	0.60	2.85	4.46	5.35	8.00	13.35	18.40			
North Korea	0.14	0.14	0.19	0.28	0.36	0.45	0.55			
European Satellites	8.55	14.3	15.4	16.2	17.4	19.4	20.9			
Bulgaria	0.03	0.12	0.18	0.21	0.26	0.28	0.30	1.65		
Czechoslovakia	3.12	4.47	4.88	5.17	5.51	6.14	6.67	10.6		
East Germany	1.27	2.84	3.11	3.30	3.46	3.66	3.73	5.2		
Hungary	1.05	1.63	1.42	1.38	1.63	1.76	1.89	2.4		
Poland	2.52	4.43	5.01	5.30	5.63	6.16	6.50	9.3		
Rumania	0.56	0.77	0.78	0.86	0.93	1.42	1.79	3.3		

a. Unless otherwise indicated, data refer to the total production of ingots and steel for castings.  
 b. Excluding production from native furnaces.  
 c. Including 4.72 million metric tons of steel made in small side-blown converters.  
 d. Including 5.50 million metric tons of steel made in small side-blown converters.  
 e. Plan for 1967.

Production of Selected Agricultural Commodities  
1960

February 1961

Item	Unit of Measure	NAFO	US	Sino-Soviet bloc	USSR	Communist China	North Korea	North Vietnam	Russian satellites	Albania	Bulgaria	Czechoslo- vlovakia	East Germany	Hungary	Poland	Rumania
Total Grain a/	Million MT	296	190	311	100	160 b/	3.5	4.8	13.1	0.2	3.5	5.0	5.5	6.7	13.0	9.2
Cotton (ginned)	Thousand MT	3,430	3,169	3,323	1,500	1,800	N.A.	N.A.	23.0	4.0	17.5	0	0	0	0	1.5
Meat g/	Thousand MT	24,000 g/	12,337	14,801	6,000	5,500	60	115	3,120	13	190	470	710	285	1,060 g/	398

a. Including wheat, rye, barley, oats, corn, and rice, where produced. Data for the USSR, Communist China, and North Korea include other miscellaneous grains but not tubers. Data for the US include other miscellaneous grains, such as sorghum.

b. Excluding 30 million metric tons of tubers as grain equivalents. (Four metric tons of tubers equal 1 metric ton of grain.)

c. Primed carcass weight basis. Including beef, veal, pork, mutton, lamb, goat, and horse meat, where produced. Data for the USSR also include poultry meat and slaughter fats but exclude horse meat. Data for Communist China also include poultry meat.

d. Data for 1959, including data for 1960 for the US.

e. 1 July 1959 to 30 June 1960.

Production of Manufactured Items  
1960

February 1961

Item	Unit of Measure	USSR	Sino-Soviet Bloc	USA	China	Communist North Korea	North Vietnam	European satellites	Albania	Bulgaria	Czechoslovakia	East Germany	Hungary	Poland	Rumania
Chemicals and Rubber															
Sulfuric Acid (100-Percent Basis)	Thousand MT	29,700	16,300	9,620	5,700	1,400	290	Negl.	2,431	0	110	552	720	157	680
Synthetic Soda (Nitrogen Basis)	Thousand MT	6,860	3,560	2,150	890	360	125	0	977	0	87	136	380	70	282
Caustic Soda (100-Percent Basis)	Thousand MT	6,330	4,440	1,990	810	420	30	Negl.	728	0	17	109	330	16	162
Synthetic Rubber	Thousand MT	1,750	1,470	474	365	1	0	0	108	0	0	1	85.5	0	0
Electronic Equipment															
Electron Tubes	Million Units	900	430	228	125	48	0	0	55.4	0	Negl.	13.2	19	12	10
Radio Receivers	Thousand Units	24,000	17,000	8,320	4,200	1,800	0	0	2,320	0	150	250	640	200	180
Television Receivers	Thousand Units	12,000	5,900	2,570	1,600	10	0	0	962	0	8	230	395	128	200
Transportation Equipment															
Commercial Vehicles	Thousand Units	2,361	1,217	473.4	381	22	3	0	67.4	0	0	16.0	13.2	4.7	22.5
Locomotives	Units	3,823	1,030	4,203	2,180	800	0	0	2,283	0	0	280	260	380	203
Freight Cars	Units	127	61.7	96.3	35.0	32.0	0.8	0	28.5	0	1.2	6.0	5.0	0	13.4
Machinery and Equipment	Thousand Units	N.A.	50.0	284.7	132.0	50.0	2.2	0.6	79.9	0	2.8	24.5	21.0	6.5	21.5
Tractors	Thousand Units	542	175	322	238.5	10	3	0	70.0	0	0.2	34.3	8.5	2.6	7.4

1. Data for 1959, including data for 1960 for the US.  
 2. Including combined radio-phonographs.  
 3. Including light and heavy trucks, wheeled tractors for road haulage, special vehicles, and buses.  
 4. Mainline unless otherwise indicated.  
 5. Including data for 1958 for Canada and the UK; for 1959, for France, Italy, and West Germany; and for 1960, for the US.  
 6. Includes reports, which in 1960 totaled about 575 locomotives.  
 7. Perhaps including arrow-gauges, industrial, or shunting types.  
 8. For an explanation of production statistics on metalcutting machine tools for Communist China, see footnote a, p. 19, below.





Trade  
1960

February 1961

Million US \$

Item	Bloc-Soviet Bloc		Communist China		North Korea		North Vietnam		European Satellites		Albania		Bulgaria		Czechoslovakia		East Germany		Hungary		Poland		Rumania	
	USSR	China	USSR	China	USSR	China	USSR	China	USSR	China	USSR	China	USSR	China	USSR	China	USSR	China	USSR	China	USSR	China	USSR	China
Total Trade Turnover																								
Exports	N.A.	N.A.	N.A.	N.A.	N.A.	N.A.	N.A.	N.A.	N.A.	N.A.	N.A.	N.A.	N.A.	N.A.	N.A.	N.A.	N.A.	N.A.	N.A.	N.A.	N.A.	N.A.	N.A.	
Imports	N.A.	N.A.	N.A.	N.A.	N.A.	N.A.	N.A.	N.A.	N.A.	N.A.	N.A.	N.A.	N.A.	N.A.	N.A.	N.A.	N.A.	N.A.	N.A.	N.A.	N.A.	N.A.	N.A.	
Total	11,000 \$/	4,200 \$/	2,300 \$/	1,400 \$/	320	192	1,180	2,000	1,950	4,500	1,850	1,500	1,000	1,000	1,500	1,500	1,500	1,500	1,500	1,500	1,500	1,500	1,500	
East-West Trade																								
Exports to West	N.A.	N.A.	N.A.	N.A.	N.A.	N.A.	N.A.	N.A.	N.A.	N.A.	N.A.	N.A.	N.A.	N.A.	N.A.	N.A.	N.A.	N.A.	N.A.	N.A.	N.A.	N.A.	N.A.	
Imports from West	N.A.	N.A.	N.A.	N.A.	N.A.	N.A.	N.A.	N.A.	N.A.	N.A.	N.A.	N.A.	N.A.	N.A.	N.A.	N.A.	N.A.	N.A.	N.A.	N.A.	N.A.	N.A.	N.A.	
Total	3,300 \$/	1,400 \$/	13	12			230	1,100	1,100	1,100	1,100	1,100	1,100	1,100	1,100	1,100	1,100	1,100	1,100	1,100	1,100	1,100	1,100	
Intra-Bloc Trade																								
Exports to Other Bloc Countries	N.A.	N.A.	N.A.	N.A.	N.A.	N.A.	N.A.	N.A.	N.A.	N.A.	N.A.	N.A.	N.A.	N.A.	N.A.	N.A.	N.A.	N.A.	N.A.	N.A.	N.A.	N.A.	N.A.	
Imports from Other Bloc Countries	N.A.	N.A.	N.A.	N.A.	N.A.	N.A.	N.A.	N.A.	N.A.	N.A.	N.A.	N.A.	N.A.	N.A.	N.A.	N.A.	N.A.	N.A.	N.A.	N.A.	N.A.	N.A.	N.A.	
Total	1,700 \$/	2,800 \$/	207	180			250	2,750	1,400	1,250	1,400	1,250	1,400	1,250	1,400	1,250	1,400	1,250	1,400	1,250	1,400	1,250	1,400	
Aid Programs b/																								
Bloc Aid to Underdeveloped Countries of the Free World, by Assisting Country (Jan 1954 - Dec 1960)	4,800	3,552	282	0	0	0	966	0	4	654	98	18	220	12										
Soviet Aid to Bloc Countries (Jan 1956 - Dec 1960)	2,146 \$/	0	147.5	265	1,763	139.3	371.6	13.5	915.0	328.8	300.0	95.0												
Chinese Communist Aid to Bloc Countries (Jan 1954 - Oct 1960)	841 \$/	0	330	300	96	38	0	0	0	58	58	0	0											

a. Estimated data.  
 b. Extension of credits and grants.  
 c. Excluding US \$212.6 million of Soviet aid to Mongolia.  
 d. Including US \$115 million of Chinese Communist aid to Mongolia.

Military End Items  
1960

February 1961

Item	Unit	USSR	China	North Korea	North Vietnam	European Satellite	Albania	Romania	Czechoslovakia	East Germany	Hungary	Poland	Rumania
Aircraft Production <sup>g/</sup>													
Fighters	Units	1,033	630	735	227	108	0	0	100	0	0	0	0
Bombers	Units	277	472	411	40	0	0	0	0	0	0	0	0
Transports	Units	292 <sup>b/</sup>	308	292 <sup>c/</sup>	411	149	0	0	30	2	0	0	0
Naval Vessels													
Naval Strength as of 31 October 1960 <sup>g/</sup>													
Surface Vessels													
Aircraft Carriers	Units	10 <sup>g/</sup>	25 <sup>f/</sup>	0	0	0	0	0	0	0	0	0	0
Battleships	Units	63 <sup>g/</sup>	46 <sup>f/</sup>	25	23	0	0	0	0	0	0	0	0
Cruisers	Units	762 <sup>g/</sup>	369 <sup>f/</sup>	212	196	4	0	0	12	0	0	0	0
Destroyers	Units	451 <sup>g/</sup>	268 <sup>f/</sup>	212	196	4	0	0	12	0	0	0	0
Patrol Vessels	Units	938 <sup>g/</sup>	304 <sup>f/</sup>	1,016	1,016	223	0	0	167	18	0	0	0
Mine Vessels	Units	341 <sup>g/</sup>	234 <sup>f/</sup>	1,071	722	27	0	0	128	5	19	0	0
Amphibious Vessels	Units	299 <sup>g/</sup>	130 <sup>f/</sup>	493	415	305	0	0	14	0	16	0	0
Submarines	Thousand LSD <sup>g/</sup>	N.A.	N.A.	87.9	41.2	23	0	0	15	0	5	0	0
New Construction	Thousand LSD	N.A.	N.A.	46.0	36.3	7.0	Regl.	0	2.7	0	0	0	0
Surface Vessels	Thousand LSD	N.A.	N.A.	41.9	31.9	1.0	Regl.	0	0	0	0	0	0
Submarines	Units	N.A.	N.A.	0	0	0	0	0	0	0	0	0	0
Truck and Assault Gun Production (by Type) <sup>h/</sup>													
Amphibious Trucks	Units	N.A.	N.A.	500	500	0	0	0	0	0	0	0	0
Heavy Trucks	Units	N.A.	N.A.	4,290	4,000	0	0	0	0	0	0	0	0
Medium Trucks	Units	N.A.	N.A.	300	300	0	0	0	790	0	0	0	0
Medical Assault Guns	Units	N.A.	N.A.	0	0	0	0	0	0	0	0	0	0
Heavy Assault Guns	Units	N.A.	N.A.	0	0	0	0	0	0	0	0	0	0

1. SOURCE OF DATA FOR THE BIRD-SOVIET BLOCK: CIA source of data for USSR, N.A.T.C.  
 2. Including both civil and military transports.  
 3. Including both civil and military transports. The majority of which are civil (passengers not available).  
 4. Source of data for the Bird-Soviet Block and NATO (except the USSR) is the Department of Defense, 31 October 60, g/ source of data for the US; NAVY, OPNAV, Form 1141-24, Report of Inventory and Assessment of Naval Ships as of 31 December 1960, 6 Jan 61, 7. Data for the US and NATO include reserves and active fleets.  
 5. Including US data as of 31 December 1960.  
 6. Naval strength as of 31 December 1960.  
 7. Naval strength as of 31 December 1960. In the case of submarines or vessels listed as "Regl." (Reserve), the number of vessels in the inventory is given but not the number of vessels in the fleet.  
 8. Source: Statistics presented by ACST at the Fifth AC Land Armaments Production Conference, Ottawa, 1-7 October 1960, B.

Production of Energy and Fuels  
1960

February 1961

Item	Unit of Measure	MAND	US	Sino-Soviet Bloc	USSR	Communist China	North Korea	North Vietnam	European	Albania	Bulgaria	Czechoslovakia	East Germany	Hungary	Poland	Romania
Electric Power, g/ Total	Million kWh b/	1,472 g/	896	478	822	28	2	0.25	115.78	0.18	4.33	24.27	42.50	1.60	29.00	7.70
Hydro	Million kWh	395	155	78	55	9	8.5	0.01	5.65	0.11	1.45	2.43	0.64	0.08	0.60	0.34
Thermal	Million kWh	1,080	741	400	240	0	0.5	0.24	111.13	0.07	3.08	22.84	41.86	7.52	28.40	7.36
Nuclear g/	Million kWh	(2.5)	(0.6)	(1)	(1)	0	0	0	0	0	0	0	0	0	0	0
Hard Coal g/	Million MT	827	388	942	366	425 f/	6.5	2.45	142.0	0	0.55	27.6	2.66	2.85	104.0	4.3
Brown Coal and Lignite	Million MT	106	2.4	425	146	Neg.	3.5	Neg.	335.7	0.3	16.7	56.7	225.0	23.69	9.2	4.1
Crude Petroleum	Million MT	386	348	166	147.5	5.2 f/	0	0	13.8	0.67	0.18	0.12	Neg.	1.15	0.18	11.50
Natural Gas b/	Billion Cubic Meters	389	365	57	44	N.A.	0	0	12.9	Neg.	Neg.	2.00	0.04	0.33	0.51	10.00
Primary Energy from All Sources, Total	Million MT/BR	2,060	1,400	1,380	677	427	12	2	272	1	10	22	73	15	23	35
Hydroelectric	Million MT/BR	169	61	37	38	4.5	4.2	0.005	2.8	0.05	0.72	1.2	0.32	0.04	0.30	0.17
Coal	Million MT/BR	866	404	1,030	388	395	7.8	2.3	238	0.15	8.7	48	73	13	92	3.6
Petroleum (Crude Oil and Natural Gas)	Million MT/BR	1,020	936	310	264	7.8	0	0	38	0.94	0.23	2.8	0.06	2.0	0.93	31

a. Data pertain to gross production (including powerplant use).  
 b. Kilo-watt-hours.  
 c. Gross production data derived by inflating net production figure for thermal powerplants to allow for 7 percent station consumption by thermal powerplants.  
 d. Nuclear power is included in the thermal power total, as it is only a subdivision of thermal power.  
 e. Including anthracite and bituminous coal.  
 f. Including a negligible amount of brown coal.  
 g. Including natural and synthetic crude oil.  
 h. Production for NATO, the US, and the USSR excludes gas for repressuring and gas wasted.  
 i. Standard fuel (SF) has a calorific value of 7,000 kilocalories per kilogram.  
 j. Converted at 450 grams per kilowatt-hour for NATO countries (except for the US).  
 k. Converted at 395 grams per kilowatt-hour, the projected national average for 1960.  
 l. Converted at 456 grams per kilowatt-hour, the projected national average for 1960.  
 m. Converted at 500 grams per kilowatt-hour.  
 n. Converted at 1.43 metric tons of standard fuel per metric ton of crude oil and 1.2 metric tons of standard fuel per thousand cubic meters of natural gas.



US Government Economic Aid and Sino-Soviet Bloc Aid  
to Selected Free World Countries  
1 July 1955 - December 1960

February 1961

Recipient Country	US \$ /		Sino-Soviet Bloc		Total
	Economic Aid	Economic Aid	Military Aid	111 g/	
Total	7,130.4	3,276	2,197	4,772	
Afghanistan	106.0	206		285	
Argentina	300.9	104	39	104	
Brazil	645.7	3		104	
Burma	72.7	12		3	
Cambodia	172.7	72		12	
Ceylon	67.0	58		72	
Cuba	20.1	208		58	
EGYPT	180.7	586		208	
Ethiopia	73.2	114		901	
Ghana	4.3	50		114	
Guinea	27.1	107		50	
Iceland	1,936.5	5		107	
India	256.4	932		5	
Indonesia	341.5	501		932	
Iran	13.0	0		1,007	
Iraq	199.1	216		6	
Morocco	20.2	41		404	
Nepal	1,007.7	41		41	
Pakistan	44.7	3		41	
Sudan	32.7	b/		3	
Syria	182.2	177		177	
Tunisia	813.2	6		304	
Turkey	11.2	12		8	
Yemen	599.5	14		12	
Yugoslavia		111 g/	17	61	
				111 g/	

a. Including economic and technical assistance and defense support obligations under the Mutual Security Program, FY 1960 funds earmarked for country use, Development Loan Fund approvals, and authorized long-term Export-Import Bank loans.  
 b. US \$0.5 million or less.  
 c. Excluding some US \$350 million in Bloc credits extended to Yugoslavia in 1956 and either canceled or allowed to expire.



UNCLASSIFIED

Population of the Sino-Soviet Bloc, the US, and NATO  
Selected Years, 1938-75

February 1961

Country	Present Boundaries										Former Boundaries									
	1938	1945	1950	1955	1960	1965	1970	1975	1980	1985	1938	1945	1950	1955	1960	1965	1970	1975	1980	1985
USSR	168.5	191.7	185.0	180.3	182.2	181.1	180.9	193.8	211.1	221.3	221.3	221.3	221.3	221.3	221.3	221.3	221.3	221.3	221.3	221.3
European Satellite	112.1	121.4	120.1	118.7	118.2	118.1	118.1	120.9	121.3	121.3	121.3	121.3	121.3	121.3	121.3	121.3	121.3	121.3	121.3	121.3
Albania	2.0	2.0	2.0	2.0	2.0	2.0	2.0	2.0	2.0	2.0	2.0	2.0	2.0	2.0	2.0	2.0	2.0	2.0	2.0	2.0
Bulgaria	11.3	11.3	11.3	11.3	11.3	11.3	11.3	11.3	11.3	11.3	11.3	11.3	11.3	11.3	11.3	11.3	11.3	11.3	11.3	11.3
Czechoslovakia	26.1	26.1	26.1	26.1	26.1	26.1	26.1	26.1	26.1	26.1	26.1	26.1	26.1	26.1	26.1	26.1	26.1	26.1	26.1	26.1
East Germany	19.2	19.2	19.2	19.2	19.2	19.2	19.2	19.2	19.2	19.2	19.2	19.2	19.2	19.2	19.2	19.2	19.2	19.2	19.2	19.2
Poland	31.8	31.8	31.8	31.8	31.8	31.8	31.8	31.8	31.8	31.8	31.8	31.8	31.8	31.8	31.8	31.8	31.8	31.8	31.8	31.8
Romania	19.8	19.8	19.8	19.8	19.8	19.8	19.8	19.8	19.8	19.8	19.8	19.8	19.8	19.8	19.8	19.8	19.8	19.8	19.8	19.8
Yugoslavia	19.8	19.8	19.8	19.8	19.8	19.8	19.8	19.8	19.8	19.8	19.8	19.8	19.8	19.8	19.8	19.8	19.8	19.8	19.8	19.8
Asian Countries	22.2	22.2	22.2	22.2	22.2	22.2	22.2	22.2	22.2	22.2	22.2	22.2	22.2	22.2	22.2	22.2	22.2	22.2	22.2	22.2
Communist China	48.0	48.0	48.0	48.0	48.0	48.0	48.0	48.0	48.0	48.0	48.0	48.0	48.0	48.0	48.0	48.0	48.0	48.0	48.0	48.0
North Korea	8.9	8.9	8.9	8.9	8.9	8.9	8.9	8.9	8.9	8.9	8.9	8.9	8.9	8.9	8.9	8.9	8.9	8.9	8.9	8.9
North Vietnam	12.5	12.5	12.5	12.5	12.5	12.5	12.5	12.5	12.5	12.5	12.5	12.5	12.5	12.5	12.5	12.5	12.5	12.5	12.5	12.5
Kampuchea	0.8	0.8	0.8	0.8	0.8	0.8	0.8	0.8	0.8	0.8	0.8	0.8	0.8	0.8	0.8	0.8	0.8	0.8	0.8	0.8
Total Sino-Soviet Bloc	781	781	781	781	781	781	781	781	781	781	781	781	781	781	781	781	781	781	781	781
US	130.0	130.0	130.0	130.0	130.0	130.0	130.0	130.0	130.0	130.0	130.0	130.0	130.0	130.0	130.0	130.0	130.0	130.0	130.0	130.0
Other NATO Countries	230.1	230.1	230.1	230.1	230.1	230.1	230.1	230.1	230.1	230.1	230.1	230.1	230.1	230.1	230.1	230.1	230.1	230.1	230.1	230.1
Belgium	8.4	8.4	8.4	8.4	8.4	8.4	8.4	8.4	8.4	8.4	8.4	8.4	8.4	8.4	8.4	8.4	8.4	8.4	8.4	8.4
Canada	11.4	11.4	11.4	11.4	11.4	11.4	11.4	11.4	11.4	11.4	11.4	11.4	11.4	11.4	11.4	11.4	11.4	11.4	11.4	11.4
Denmark	3.0	3.0	3.0	3.0	3.0	3.0	3.0	3.0	3.0	3.0	3.0	3.0	3.0	3.0	3.0	3.0	3.0	3.0	3.0	3.0
France	41.9	41.9	41.9	41.9	41.9	41.9	41.9	41.9	41.9	41.9	41.9	41.9	41.9	41.9	41.9	41.9	41.9	41.9	41.9	41.9
Great Britain	59.9	59.9	59.9	59.9	59.9	59.9	59.9	59.9	59.9	59.9	59.9	59.9	59.9	59.9	59.9	59.9	59.9	59.9	59.9	59.9
West Germany	51.9	51.9	51.9	51.9	51.9	51.9	51.9	51.9	51.9	51.9	51.9	51.9	51.9	51.9	51.9	51.9	51.9	51.9	51.9	51.9
Italy	43.6	43.6	43.6	43.6	43.6	43.6	43.6	43.6	43.6	43.6	43.6	43.6	43.6	43.6	43.6	43.6	43.6	43.6	43.6	43.6
Ireland	0.1	0.1	0.1	0.1	0.1	0.1	0.1	0.1	0.1	0.1	0.1	0.1	0.1	0.1	0.1	0.1	0.1	0.1	0.1	0.1
Netherlands	0.3	0.3	0.3	0.3	0.3	0.3	0.3	0.3	0.3	0.3	0.3	0.3	0.3	0.3	0.3	0.3	0.3	0.3	0.3	0.3
Luxembourg	0.7	0.7	0.7	0.7	0.7	0.7	0.7	0.7	0.7	0.7	0.7	0.7	0.7	0.7	0.7	0.7	0.7	0.7	0.7	0.7
Portugal	7.5	7.5	7.5	7.5	7.5	7.5	7.5	7.5	7.5	7.5	7.5	7.5	7.5	7.5	7.5	7.5	7.5	7.5	7.5	7.5
Spain	17.2	17.2	17.2	17.2	17.2	17.2	17.2	17.2	17.2	17.2	17.2	17.2	17.2	17.2	17.2	17.2	17.2	17.2	17.2	17.2
Norway	4.5	4.5	4.5	4.5	4.5	4.5	4.5	4.5	4.5	4.5	4.5	4.5	4.5	4.5	4.5	4.5	4.5	4.5	4.5	4.5
Total NATO	471.5	471.5	471.5	471.5	471.5	471.5	471.5	471.5	471.5	471.5	471.5	471.5	471.5	471.5	471.5	471.5	471.5	471.5	471.5	471.5

a. Excluding West Berlin.  
 b. The population of West Berlin in 1938 is estimated to have been 2.7 million persons.  
 c. Kamuchea as West Berlin is not an integral part of NATO, the NATO total does not include West Berlin. The estimated population of West Berlin for the period 1951-75 is about 2.2 million persons.

UNCLASSIFIED

Military Age Group, Size of Armed Forces,  
and Civilian Labor Force  
Selected Years, 1956-66

February 1961

Year	Unit of Measure	USSR	USSR	Communist China	North Korea	North Vietnam	Russian Satellite	Albania	Bulgaria	Czechoslovakia	East Germany	Hungary	Poland	Romania
1956	Million Persons	N.A.	11.2	79	18.7	31	0.3	1.3	7.47	0.13	0.66	0.93	1.10	0.76
1961	Million Persons	N.A.	11.3	82	19.2	36	0.5	1.4	7.50	0.14	0.61	0.92	1.25	0.69
1966	Million Persons	N.A.	12.9	88	17.0	61	1.0	1.6	7.17	0.15	0.58	0.99	1.11	0.72
Size of Armed Forces, Mid-1960	Thousand Persons	6,000	2,509	8,630	3,875	2,808	368	307	1,860	38	162	220	142	138
Military	Thousand Persons	5,700		8,090	3,662	2,828	312	272	1,713	28	127	175	92	103
Militarized Security	Thousand Persons	300		560	213	98	56	35	147	35	35	45	50	35
Civilian Labor Force, 1960	Million Persons	N.A.	72.7	902	105.6	335	4.0	8.2	48.8	0.77	4.06	6.47	8.34	4.57

a. Beginning-of-year estimate.  
 b. Assuming an average annual emigration of 200,000 persons of all ages.  
 c. 1 January 1960.  
 d. Including 200,000 public security forces subordinate to the Ministry of National Defense.  
 e. The militarized security forces of Communist China are subordinate to the Ministry of National Defense.  
 f. Mid-1960.  
 g. Assuming a declining net emigration.

UNCLASSIFIED

Production of Major Industrial Commodities  
and Grain in Communist China  
1952-60

February 1961

Item	Unit of Measure	Year									
		1952	1953	1954	1955	1956	1957	1958	1959	1960	
Crude Steel	Million MT	1.35	1.77	2.22	2.85	4.46	5.35	8.0	13.4	18.4	
Coal	Million MT	66.5	69.7	83.7	98.3	110.4	130.7	270.2	347.8	425	
Crude Oil	Million MT	0.44	0.62	0.79	0.97	1.16	1.46	2.26	3.7	5.2	
Electric Power	Billion KWH	7.26	9.2	11.0	12.3	16.6	19.3	27.5	41.5	58.3	
Machine Tools a/	Thousand Units	13.7	20.5	15.9	13.7	25.9	28.3	30	33	38	
Trucks	Thousand Units	0	0	0	0	1.6	7.5	16.0	19.4	22	
Tractors	Thousand Units	0	0	0	0	0	0	1	3	10	
Cement	Million MT	2.86	3.88	4.60	4.50	6.39	6.86	9.30	12.27	15	
Timber	Million Cubic Meters	11.2	17.5	22.2	20.9	20.8	27.9	35.0	41.2	43	
Paper (Machine Made) b/	Million MT	0.37	0.43	0.55	0.59	0.74	0.91	1.22	1.7	2.13	
Chemical Fertilizers	Thousand MT	39	53	71	85	132	159	266	410	580	
Sulfuric Acid	Thousand MT	190	260	344	375	517	632	740	1,050	1,400	
Cotton Cloth	Billion Linear Meters	3.83	4.69	5.23	4.36	5.77	5.05	5.7	7.5	7.6	
Cigarettes	Million Cases	2.6	3.6	3.7	3.6	3.9	4.5	4.8	5.5	6.0	
Salt	Million MT	4.9	3.6	4.9	7.5	4.9	8.3	10.4	11.0	14.9	
Grain, Including Tubers	Million MT	168	169	160	175	182	185	212	190	190	

a. Machine tools that approximate internationally accepted classifications for metalcutting machine tools. A simple count of machine tools produced, however, greatly overstates the Chinese Communist position with respect to the US because of the lower average of complexity of Chinese machine tools.

b. Chemical nutrient equivalents based on amounts of nitrogen, phosphoric anhydride, and potassium oxide.

UNCLASSIFIED

UNCLASSIFIED

Production of Major Industrial Commodities and Grain  
in Communist China, India, the USSR, and the US  
1959

February 1961

1959 Production

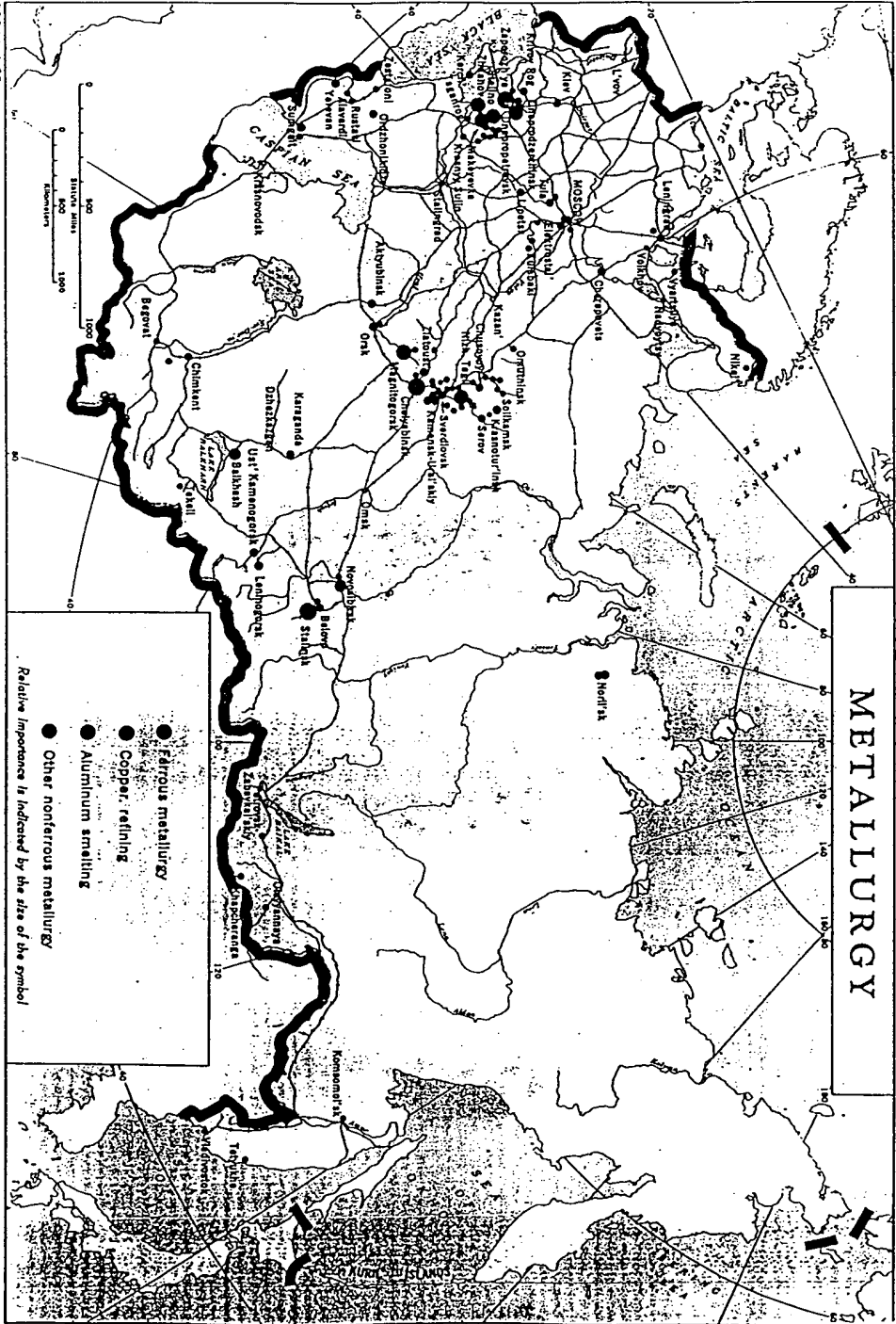
Item	Unit of Measure	Communist China	India	USSR	US
Crude Steel	Million MT	13.4	2.4	59.95	84.8
Coal	Million MT	347.8	47.8	506.5	389.6
Crude Oil	Million MT	3.7	0.44	129.5	348
Electric Power	Billion KWH	41.5	18.2	264	836
Machine Tools <sup>a/</sup>	Thousand Units	33	N.A.	146	33.9
Trucks	Thousand Units	19.4	24.5	370.5	1,137.1
Tractors	Thousand Units	3	N.A.	213.5	304.5
Cement	Million MT	12.27	6.95	38.8	60.4
Timber	Million Cubic Meters	41.2	17.0	265	264.4
Paper (Machine Made)	Million MT	1.7	0.3	2.3 b/	13.5 b/
Chemical Fertilizers <sup>c/</sup>	Thousand MT	410	111.4	3,045	7,117
Sulfuric Acid	Thousand MT	1,050	297	5,100	15,893
Cotton Cloth	Billion Linear Meters	7.5	6.1	6.2	8.7 d/
Cigarettes	Million Cases	5.5	0.6	5.1	9.6
Salt	Million MT	11.0	4.2	6.1	22.8
Grain, Including Tubers	Million MT	190	89.1 e/	100 e/	185 e/

- a. Machine tools that approximate internationally accepted classifications for metalcutting machine tools. A simple count of machine tools produced, however, greatly overstates the Chinese Communist position with respect to the US because of the lower average of complexity of Chinese machine tools.
- b. Excluding paper board.
- c. Chemical nutrient equivalents based on amounts of nitrogen, phosphoric anhydride, and potassium oxide.
- d. Including mixed fabrics; predominantly of cotton.
- e. Excluding tubers.

UNCLASSIFIED

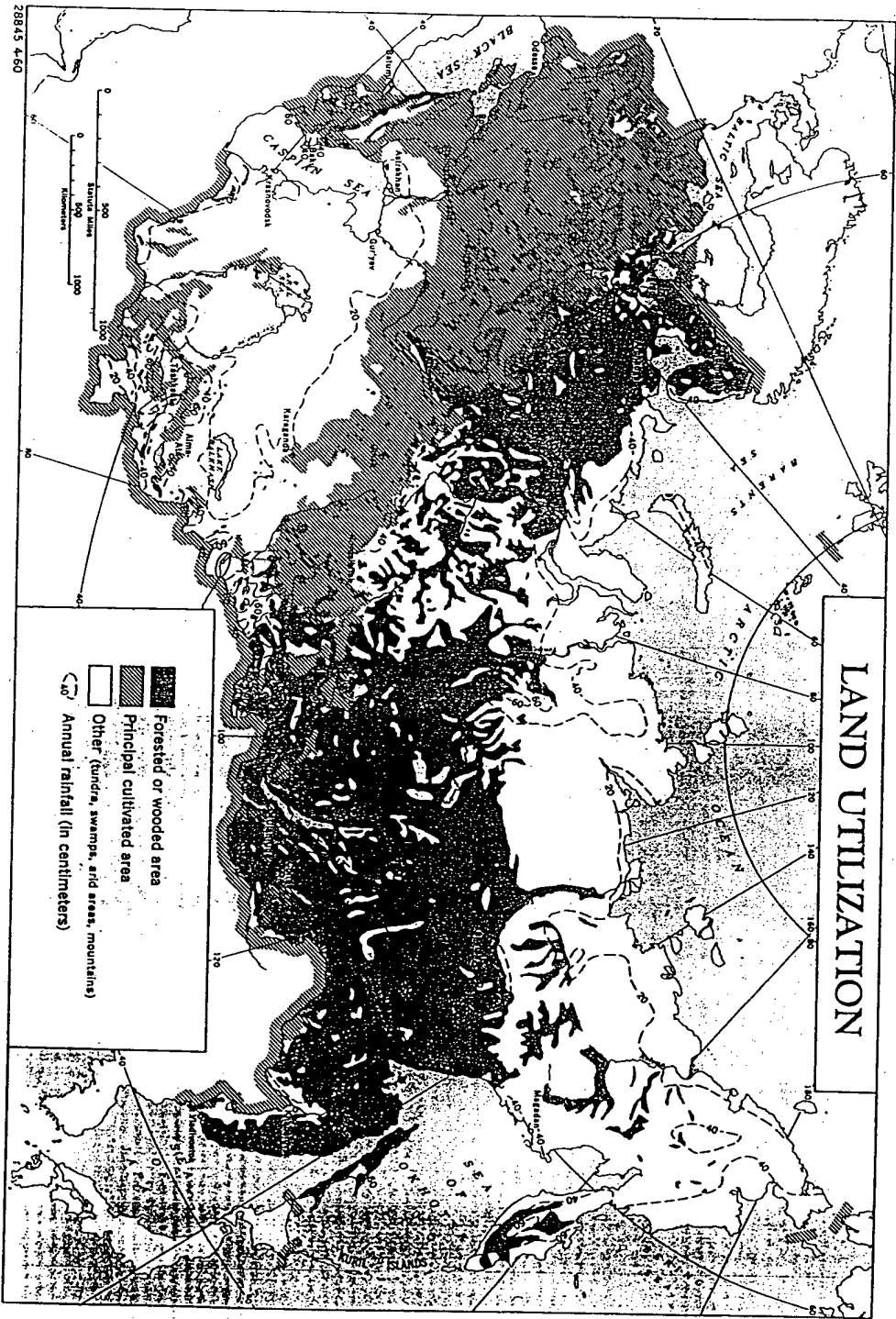


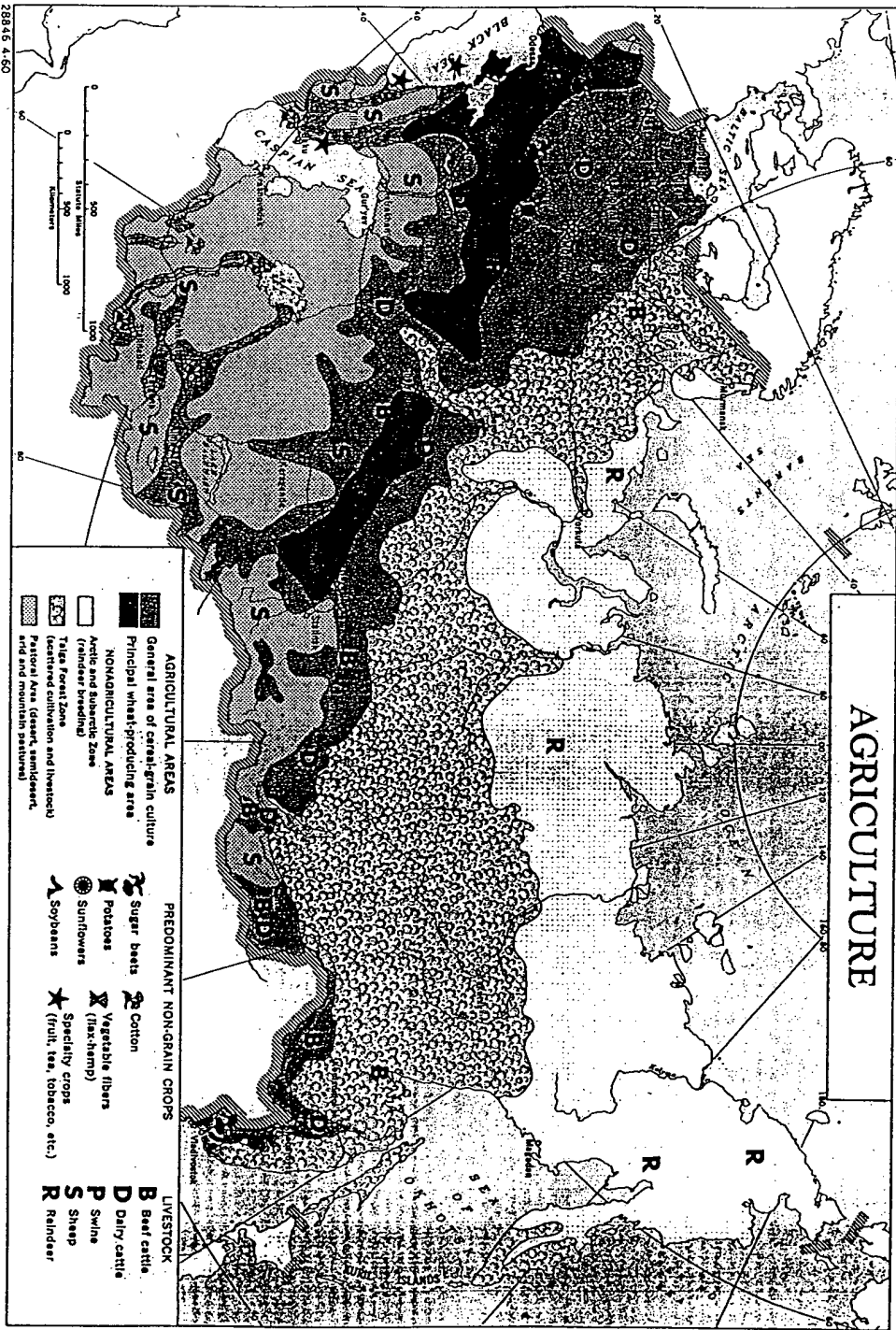
28844 4-60



# METALLURGY

- Ferroous metallurgy
  - Copper, refining
  - Aluminum smelting
  - Other nonferrous metallurgy
- Relative Importance is indicated by the size of the symbol

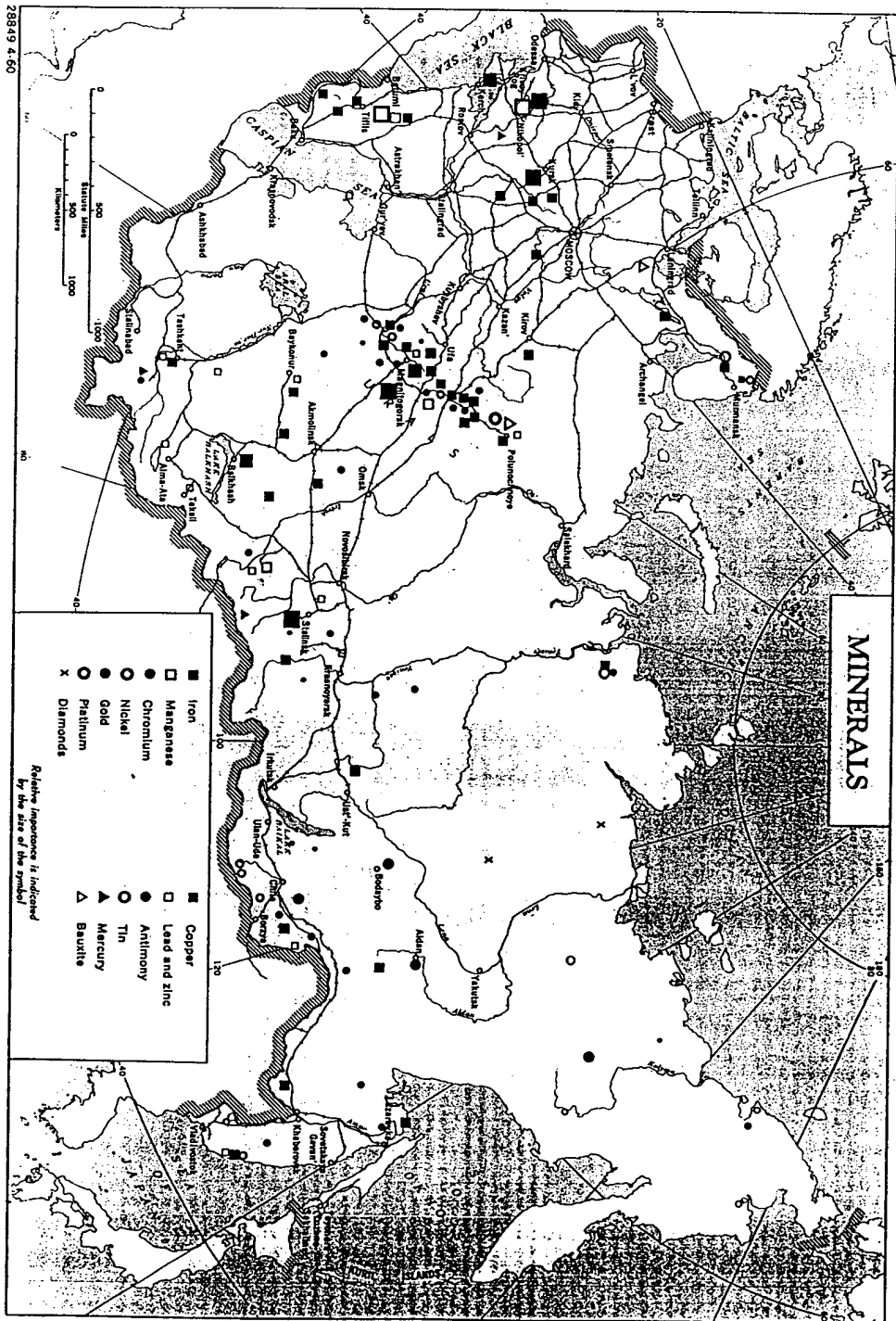












**MINERALS**

- |   |           |   |               |
|---|-----------|---|---------------|
| ■ | Iron      | ■ | Copper        |
| □ | Manganese | □ | Lead and zinc |
| ● | Chromium  | ● | Antimony      |
| ○ | Nickel    | ○ | Tin           |
| ● | Gold      | ▲ | Mercury       |
| ○ | Platinum  | △ | Bauxite       |
| X | Diamonds  |   |               |

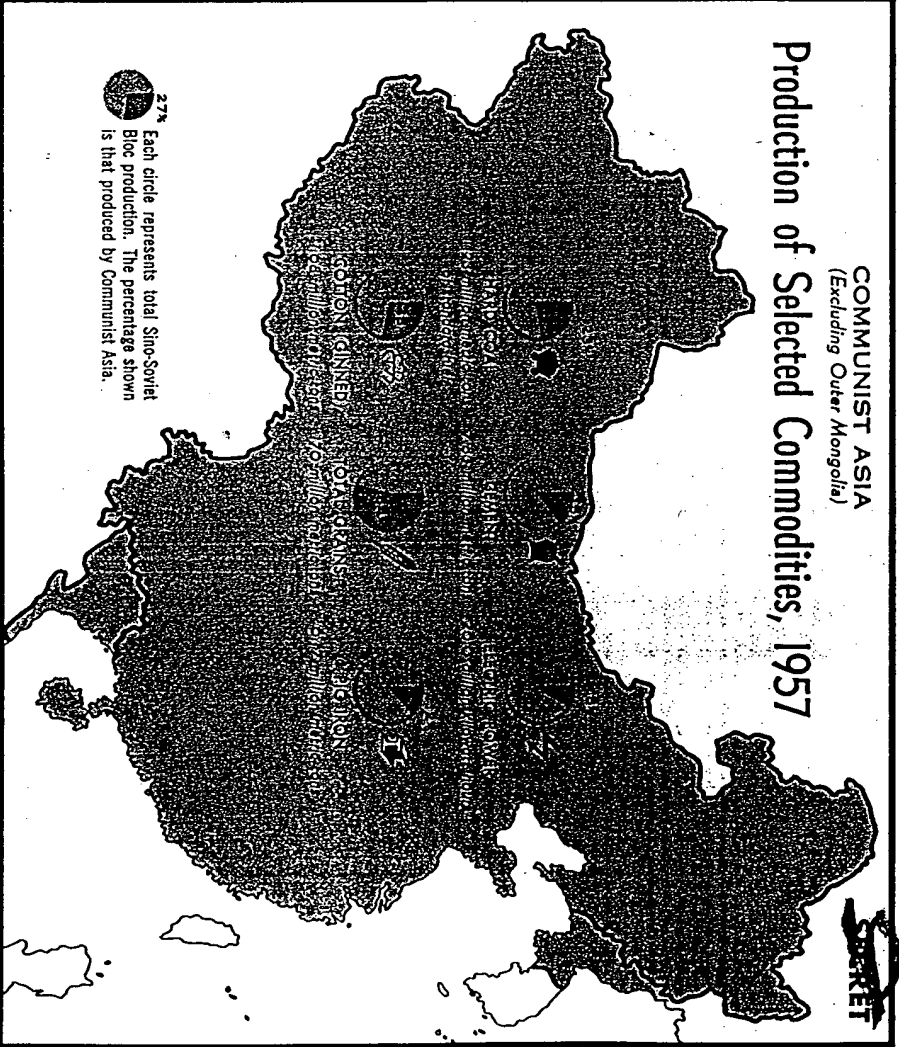
Relative importance is indicated by the size of the symbol

28849 4 50

Scale bars in Kilometers (0, 500, 1000)

**COMMUNIST ASIA**  
 (Excluding Outer Mongolia)

**Production of Selected Commodities, 1957**

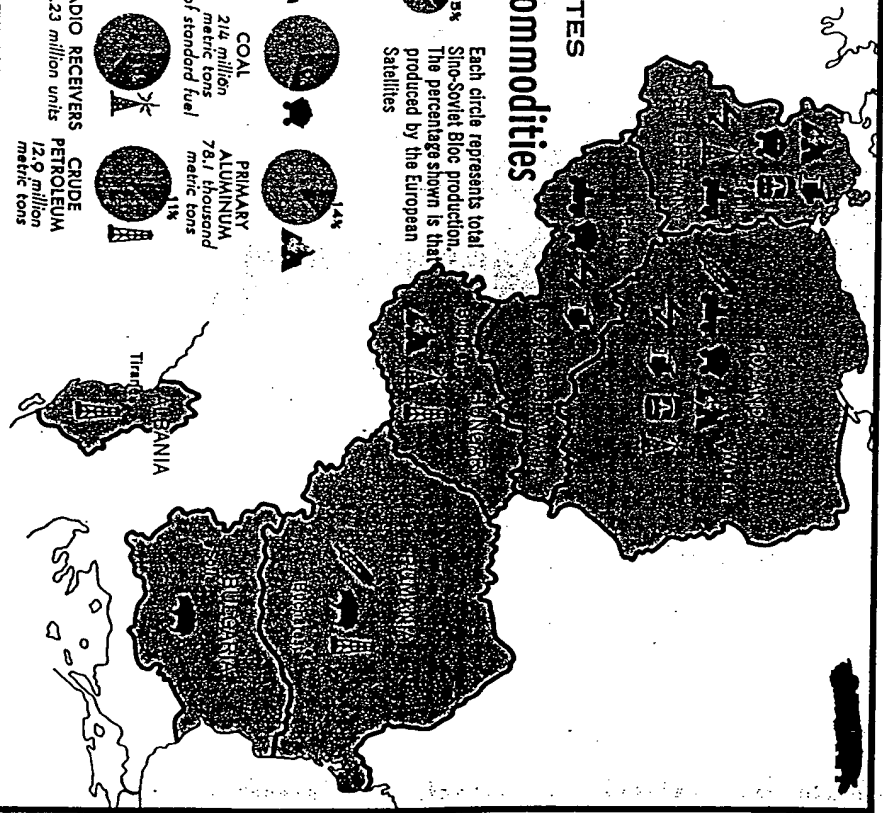
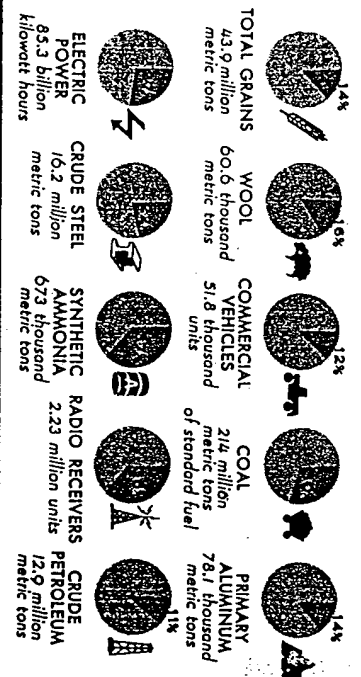


27327 11-58

**SECRET**

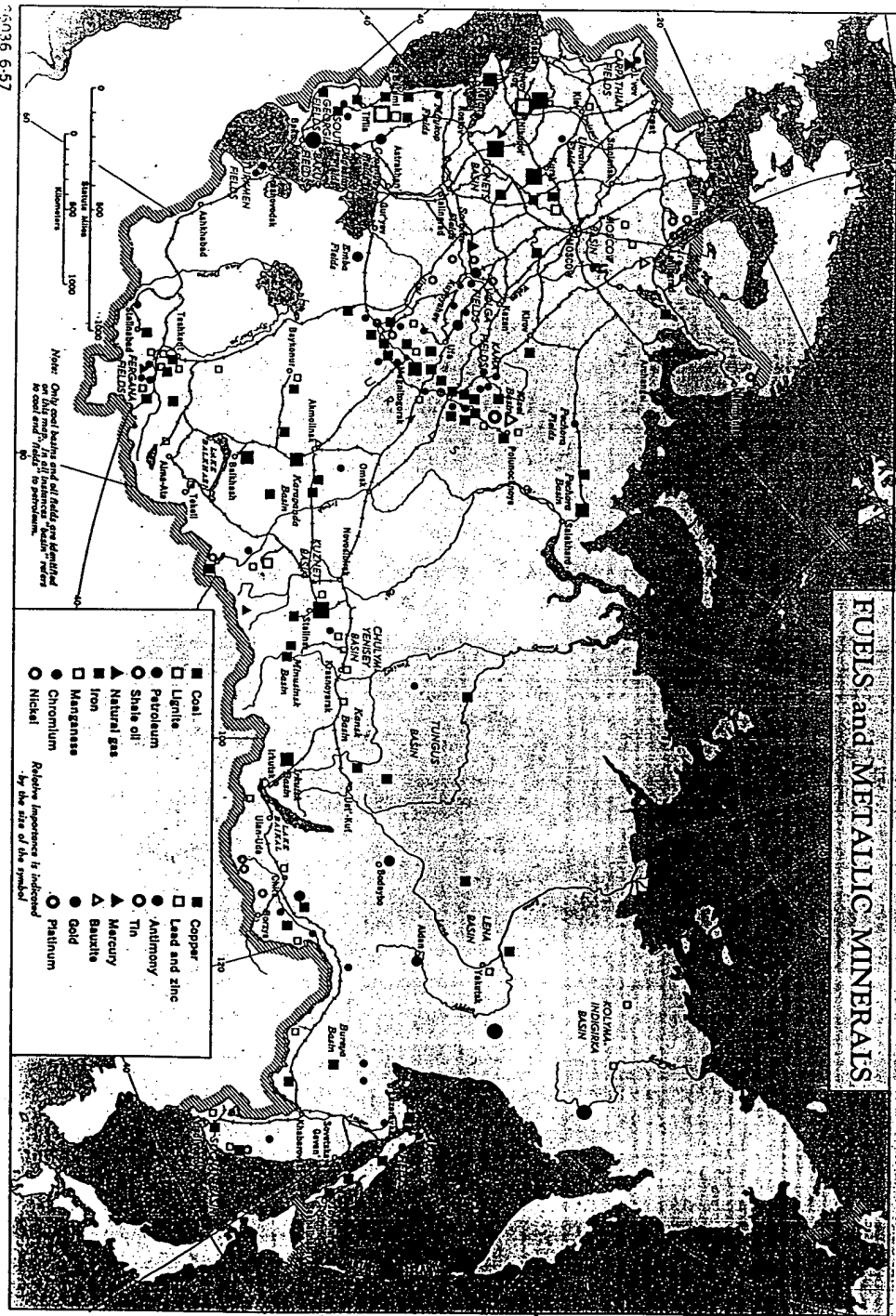
# EUROPEAN SATELLITES Production of Selected Commodities 1957

Each circle represents total  
Sino-Soviet Bloc production.  
The percentage shown is that  
produced by the European  
Satellites





# FUELS and METALLIC MINERALS



5036 6-57





