

A-11A

FIG. 4

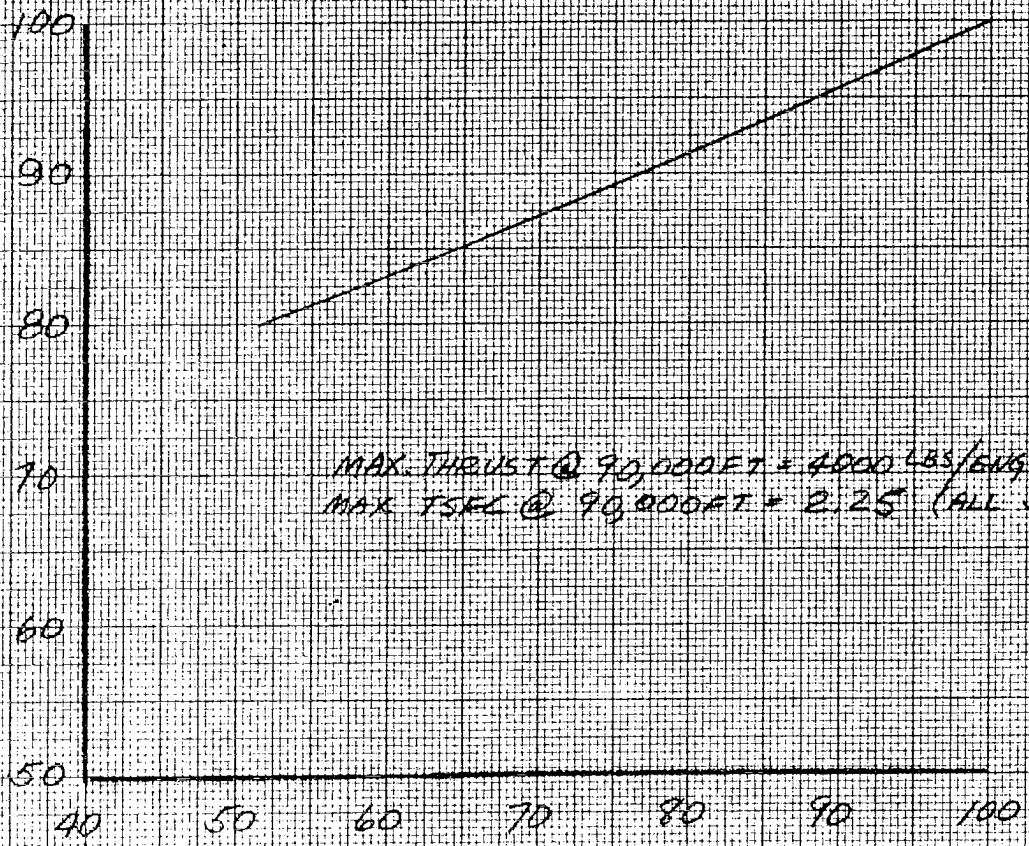
ESTIMATED PARTIAL AFTERBURNING  
PERFORMANCE

G.E. J-93-3 ENGINE

JP-150 FUEL IN PRIMARY & A/B

M = 3.20

PERCENT MAX S.F.C. AT MAX THRUST



MAX THRUST @ 90,000 FT = 4000 LBS/ENG  
MAX TSFC @ 90,000 FT = 2.25 (ALL JP-150)

PERCENT MAX THRUST

Job # 89 B00980R  
Box # 4 Folder 59

FIG. 4